

The Maine Sea Coast Mission

ANNUAL REPORT | 2008

*Taking
action to
provide
support for
our island
and coastal
communities.*

Our Mission

The Maine Sea Coast Mission provides spiritual, health, and youth development programs in coastal and island communities from mid-coast to Downeast Maine. Rooted in a history of non-denominational service, the Mission offers hope, encouragement, and help to strengthen individuals, families, and communities.



Lobster buoys attached to a float at Isle au Haut. BILL KUYKENDALL

“Knowing is not enough; we must apply. Willing is not enough; we must do.”

JOHANN VON GOETHE

Cover photo: SUNBEAM V entering Burnt Cove Harbor on Swan’s Island. BILL KUYKENDALL



Dear Friends,

Some time ago a story came out of South Africa. It was from the Nobel Peace Prize winner Bishop Desmond Tutu who was honored for his non-violent struggle against apartheid. He was asked by a reporter to recall some of the more formative experiences of his life. Bishop Tutu said, “When I was a boy I saw a white man tip his hat to a black woman.” Then Tutu said, “The man was a Bishop. The woman was my mother.”

To make a difference we must move beyond words to actions. And even the smallest action, as simple as a gesture, can form and transform our lives and the lives of those we meet.

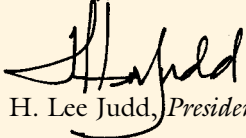
There are times at the Mission, when all of the volunteers and staff, on any given day feel that our efforts are too small, too fragile. There are days when children bear too many scars, some emotional, some physical. There are days when there are too many single moms choosing between food and fuel and too many frail elders living alone without adequate access to quality health care.

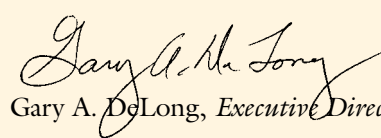
It is the goal of everyone involved with the Mission to not be deterred by the height or the depth or the power of these and many other problems and needs.

Instead, **we try to act in ways that will inspire and empower change.** We know someday there will be people who will say, “When I was boy I was afraid and then an EdGE staff member believed in me,” “I was a young mother alone with nowhere to turn and a nurse on the *Sunbeam* listened and connected me to help,” or “When I was a young girl my Dad drank too much, but there was a minister who showed up at our house often and always just in time.”

An encouraging word, a listening ear, an arm around the shoulder, a voucher for clothing, groceries on the shelf, oil in the tank, a scholarship – small, fragile conduits of compassion, through which **words were translated into action** at the Maine Sea Coast Mission. The economic outlook for 2009 requires us to be clear about our mission and smart in how we manage and spend every dollar. Thanks for joining with us as partners. Together we will go from words to actions to lives forever changed.

Sincerely,


H. Lee Judd, *President*


Gary A. DeLong, *Executive Director*

I
MSCM
2008

The Maine Sea Coast Mission

ANNUAL REPORT | 2008

MESSAGE TO FRIENDS	I
OUTREACH TO ISLANDS	2
YOUTH DEVELOPMENT	9
MEETING IMMEDIATE NEEDS	13
STATEMENT OF FINANCIAL POSITION	18
DONORS	19
BOARD OF DIRECTORS AND STAFF	24
SUPPORTING THE MISSION	<i>Inside Back Cover</i>





Kathy Mulligan, MaryBeth Judy and Sharon Daley on the SUNBEAM V at Frenchboro teaching a healthy cooking class. MIKE JOHNSON

Outreach to Islands

ISLAND HEALTH SERVICES

2
MSCM
2008

One of the signature programs of the Maine Sea Coast Mission is its Telemedicine Program and the regular visits of the *Sunbeam V* to four islands – Frenchboro, Swan’s, Isle au Haut, and Matinicus. Gary DeLong, Executive Director of the Mission, reported: “The Maine Sea Coast Mission has been providing access to high quality health care for islanders through the use of telemedicine aboard the *Sunbeam V* with a highly competent nurse since 2001.”

Sharon Daley, R.N., Director of Island Health Services, facilitated screening clinics to test for cardiac problems, cholesterol, hypertension, high blood pressure, diabetes, thyroid disease, prostate cancer, and skin cancer. She organized AA meetings, worked with the WIC program director to sign up clients, provided chronic care management in homes for individuals who cannot get to the *Sunbeam V*, gave flu shots, and organized health services such as preschool screenings. She provided telemedicine services for primary care, diabetic care, and behavioral health. Sharon also worked with the Swan’s Island Bread of Life Food Pantry to arrange

food deliveries to other islands. As the school nurse for Matinicus and Frenchboro, Sharon provided health education, conducted vision and hearing screenings, maintained immunization and health records, and served as a resource for teachers.

2008 was a busy year with established services growing and the addition of new services on the islands. One new initiative, led by Gary DeLong and Sharon, was working with people on Islesford to ease the access to health care for the elderly through telemedicine on the island and to find a way to provide meals for them. Islesford has no physician, physician assistant, nurse practitioner, or nurse. It is difficult, expensive, and time consuming for islanders to access health care on the mainland. In addition, Islesford’s elderly population is increasing. They are uncomfortable leaving the island by ferry or other type of boat. The effort included staff from Healthy Acadia and the Island Institute.

Mount Desert Island Hospital, Healthy Acadia, and the Maine Sea Coast Mission worked together to develop a program for healthy nutrition and exercise for residents of Frenchboro Island. Dieticians held classes aboard

The *Sunbeam V* with Sharon aboard extends the Mission's outreach and ensures that island residents are receiving comparable physical and mental healthcare as those living on the mainland.



the *Sunbeam V* including: healthy cooking using foods like frozen vegetables that are readily available in most homes, recipes to make low fat meals, a teacher workshop on how to incorporate exercise into the school day without a gym, and exercises for school children.

Working with Sharon, Ann Backus, Director of Outreach at Harvard School of Public Health, visited four islands on *Sunbeam V* and instructed islanders on how to put on survival suits and how to avoid the hazards of paint and rope fibers. Maine Coast Community Dental Clinic, Downeast Health Services, and the Maine Sea Coast Mission developed a dental program for two islands to provide dental services using portable equipment. Amy Booth, audiologist from the University of Maine, went on the *Sunbeam V* to three islands. She spoke to school children and islanders about hearing protection and provided free hearing evaluations and screenings.

Representatives of the Maine Sea Coast Mission joined with LifeFlight Maine representatives and Diane Barter, an EMT on Isle au Haut, on August 14, 2008 to explain the continuum of health care services that are available to residents of Isle au Haut. Residents heard presentations by Gary DeLong and Norm Dinerman, Medical Director of LifeFlight Maine.

Gary and Sharon worked closely with representatives of Mount Desert Island Hospital and the Mill Pond Health Center on Swan's Island to make telemedicine operational in 2009 at the Center. Having land based telemedicine will provide more regular service. Accessing telemedicine via the *Sunbeam V* is dependent upon satisfactory weather conditions which are sometimes problematic, especially in the winter. In addition, getting on and off the *Sunbeam V* can be challenging for the elderly and others with mobility issues.

The American College of Physicians News for Internists' April 2008 edition featured the Maine Sea Coast Mission's Island Health program in an article entitled; *Remote island communities rely on floating telemedicine unit to access care*. The article begins, "The Atlantic

Ocean may seem like a strange place to find the future of medicine, but that's where Sharon Daley, R.N., is using cutting edge technology to bring care to some very underserved patients. Ms. Daley's office is on a 75-foot boat that cruises among four small islands off the Maine coast, which are otherwise accessible only by weekly, or in one case, a monthly ferry. The islands, on which the main industry is lobstering, are home to about 65 to 70 people each and have no resident physicians."

Ministries to Islands

OUTER ISLAND MINISTRY

Serves Frenchboro, Great Cranberry, Isle au Haut, Matinicus, and Monhegan

Rev. Rob Benson, Minister to the Outer Islands, found the verses from "The Power of Love", representative of life on the islands. Ricky Baker wrote the song while on the Sunbeam Singer-Songwriter Tour in 2008.

*Now then later that day I had a chance to give
Stopped by a house where an old lady lives
Sing her favorite cowboy songs
Sparkle in her eyes was the... power of love*

*The power of love is a mystery... I can't explain it,
I just let it be
In this life I hope you're lucky enough... to feel the
power, the power of love*

"The Power of Love" is a succinct and fair representation of the Maine Sea Coast Mission's work among the islands and on the *Sunbeam V* – broader and deeper currents of grace and love which break down barriers even between giver and recipient, and can inspire a deeper, long-lasting mutuality: care for one's neighbor, care for the community, and care for the incredible and unique natural beauty of the islands.

The year began with nurturing community – a New Year's supper on Frenchboro – since weather (and a power outage) had precluded the *Sunbeam V* from stopping there for Christmas services, Rob went out

to gather the community to welcome the New Year. Soon thereafter, 14 students from six islands trekked to Belfast where they explored the opportunities and challenges of the transition to off-island high school at the fourth annual retreat for island middle schoolers.

The power of love also inspires island residents to envision ways to make their community more sustainable. With facilitator Ron Beard, Rob convened a weekend retreat for Monhegan residents in Trenton, which focused on ‘holistic sustainability’ – unearthing pathways toward a more livable island community (economic, ecological, spiritual, and interpersonal).

The *Sunbeam V* served as a vehicle to bring art and music to the island residents so they could experience joy and hope in one another’s presence – an embodiment of the power of love. The Sheep Island Rovers offered contra dances and music workshops on Matinicus and Vinalhaven. The Frogtown Mountain Puppeteers performed “Everybody Loves Pirates,” a tale of Lobster Boy’s heroic efforts, at the Swan’s

Island school. The George Stevens Academy steelband, Planet Pan, offered community steel drum workshops and concerts on both Isle au Haut and Matinicus, where many residents learned to play the steel drums and later played for their neighbors in a community concert on the wharves.

Cristy Benson offered a basket-making class and Ukrainian Easter egg-dying workshop on Isle au Haut. In the summer, eight musicians from Maine islands and coastal communities presented a four-day Sunbeam Singer-Songwriter Tour, which inspired one participant, Southwest Harbor’s Ricky Baker, to write “The Power of Love” about his day on Matinicus. Two things lighten the spirits and solidify the ground of community: new ways of relating to one’s neighbors and the simple gift of joy. The *Sunbeam V* was part of that through these arts initiatives.

Traditionally the pastor to the outer islands has also been involved with the acknowledged center of each island community – the one-room schoolhouse. The

School children from Great Cranberry and Matinicus join guest musician, Gary Bushey, for a ukulele lesson. ROB BENSON





Rev. Joe Duncan tosses a wreath into Penobscot Bay off Islesboro on Memorial Day. ANNE DUNCAN

Sunbeam V served as the host site for the third annual island teachers' retreat in August. It also brought students from Islesford and Frenchboro to the inter-island event on Isle au Haut, where nearly 50 students (K-8, from five islands) gathered for two days of activities and fun. Joining forces with the EdGE program, the *Sunbeam V* hosted ten middle school students from Washington County for their ocean adventures summer camp – kayaking off the stern of the boat and exploring the waters off Frenchboro, Isle au Haut, and Matinicus while learning about life on islands and life on board a boat.

ISLAND PARTNER CHURCHES

The Mission maintains a special partnership with four island churches on Islesboro, North Haven, Swan's, and Vinalhaven. Providing financial and administrative support, this enables the congregation to have a full-time pastor whose parish is the entire island.

North Haven Baptist Church

Rev. Dave Macy began his 18th year serving as Pastor of the North Haven Baptist Church. As pastor, he prepared and led weekly worship services, special services at Easter and Christmas, a baccalaureate service to honor North Haven Community School's

Class of 2008, and an ecumenical service in July. Dave also delivered the prayer at the opening session of the Maine House of Representatives.

Together with the church's deacons, Dave oversaw a discretionary fund which provided island residents with funds for fuel, medical, utilities and general assistance. Dave is president of The Pulpit Harbor Foundation which helped 16 island residents with medical expenses. The Foundation also contributed to the deacons' discretionary fund for utilities assistance.

It also contributed the major portion of the pay for an outreach worker who visits shut-ins, transports elderly to doctor's appointments on the mainland, assists people in town with federal and state assistance programs, and handles surplus food distributions.

The church also established a food cupboard which is left open so that anyone can access it anytime.

Kate Quinn, a volunteer, donated her time and most of the materials to help the church hold four community "coffee hours" – featuring Kate's Donuts, made on the spot – during the winter months. These events benefited the church's general fund and provided a place for community fellowship.

The North Haven Baptist Church Ladies Unity Guild, through their summer sales and thrift shop, contributed



Left: Painting of Swan's Island Baptist Church doors by Barbara Ernst Prey. The original painting is now on display at the U.S. Embassy in Paris, France. Right: Seventeen people from Three Springs Youth Ministry in Pennsylvania spent the week painting the outside of the Swan's Island Baptist Church, refinishing church furniture, and laying a new tile floor in the church.

to the church and paid for insurance on the historic Pulpit Harbor Church building, which is the church's "summer home" and sits on the site of the first church.

A ministry of the church that benefits everyone sooner or later is the work of the hospitality committee. They arrange for luncheons to be served following a funeral. This neighborly act frees grieving family and friends from the worry of feeding those who have come over from the mainland to attend a funeral, and allows additional time for visiting and a place to wait for the next boat back.

In all that Dave does, he tries to remember that his area of responsibility is tending the soul of North Haven.

Second Baptist Church in Islesboro

In 2008, Rev. Joseph Duncan became interim pastor of the Second Baptist Church in Islesboro. He soon found out that the Baptist minister is considered the community minister, and as such, has many opportunities to serve his community.

Joe served on two island/community organization boards, organized and conducted the island's Memorial Day observance, planned and led the Baccalaureate Service for the Islesboro Central School's graduat-

ing seniors, conducted sunset services on summer Sunday evenings, and hosted the island's Christ Church (Episcopal) summer priest at a joint service in August.

During Christmas, when the islanders were "locked" on an island with no evening ferry service, the Second Baptist Church hosted a community-wide pageant featuring children in costume acting out the Nativity. Rev. Duncan's wife, Anne, directed a small choir that led the singing during the well-attended Christmas Eve service.

In its seventh year, the Mission Lunch Program, sponsored by the church's Mission Committee and supported through donations and the church budget, offered free meals each Thursday. The program is planned with elderly folks in mind, but others are welcome. In 2008, lunches were offered on 50 Thursdays with not one missed! In all, 2,838 individual meals were served, an increase of 654 or 30% over 2007. The cost to the church was \$.80 per meal.

A food pantry, sponsored by the Christian Education Committee, was instituted in the fall. Pantry items were supplied through donations of food and money by island residents and businesses. It was greatly appreciated during these difficult financial times.

The Swan's Island Baptist Ladies Aid held a summer fair and luncheon. The church annex was gorgeously decorated in a Victorian theme and the ladies sold their vintage tea cups.



The Baptist Sewing Circle celebrated its 150th anniversary in the summer 2008. The banner carried by the ladies in the July 4th Parade stated that the Circle has been "Keeping Islesboro in Stitches since 1858." The Circle makes generous monetary and in-kind contributions annually to the church.

The church held outdoor services with singing and meditation at a stone pulpit overlooking Penobscot Bay at Grindle Point on Sunday evenings in the summer.

Swan's Island Baptist Church

For the second year, the Swan's Island Baptist Church partnered with the Advent Christian Church in order to save fuel costs. Rev. Ken Dutille provided pastoral leadership and care to the congregations of both churches. Services rotated between the two churches except in the summer months when the summer pastor for the Advent Christian Church returned.

Ladies of the church organized seven summer benefit dinners, which contributed to the church's general operating expenses and provided an opportunity for residents to visit. Because Swan's Island does not have a large gathering place, the dinners have become major events.

Each summer, the Baptist Ladies Aid holds a summer fair and luncheon to support the church. This year they held a Victorian Tea with homemade desserts. The Baptist church annex was decorated in a Victorian theme and the ladies sold their vintage tea cups.

On July 24, 2008 at 3:00am, Ken received a call that the island's library had a lightning strike and was on fire. As the Vice President of the Board of Directors for the Swan's Island Educational Society, he immediately went to the scene and watched as the 100-year old historical building was destroyed by fire. After the library fire, the board elected Ken as Chairman of the Building Committee.

A youth group from a church in Pennsylvania volunteered for a week to finish painting the church and

installed tile flooring in the church's kitchen and the Bread of Life Food Pantry.

The church's sanctuary was decorated with seven Christmas trees and a multi-light show was synchronized with Christmas Carols for the Christmas Eve service. "Swan's Island, The Way Life Was" was shown to the congregation and a candle lighting celebration concluded service. Island residents said that it was the best hour they had spent in awhile.

Union Church of Vinalhaven

The Union Church was in transition in 2008. In June, the congregation bid goodbye to Rev. Michelle Wiley-Arey as she finished her caring nine-year ministry and became the island music teacher at the Vinalhaven School. Until Rev. Joan Smith began her interim ministry in August, everyone enjoyed the variety and stimulation of guest ministers recruited and scheduled by the Maine Sea Coast Mission for six summer weeks. With Joan, the church council and committees have been reflecting on the blessings and changes in the church and the community, as well as signs of new life and possible new purpose.

In November, the church began sponsoring a weekly free homemade lunch for the community. The "Community Lunch Box" offered a homemade balanced meal. The community enjoyed eating, visiting, and games. Six cooks took turns and donations of grocery money, meat from a local farm, and leftovers from restaurants kept meals delicious. Leftovers were sent home with folks who don't cook, or taken to families out of work.

The island's food pantry was open quarterly. When it was open, volunteers cooked meatloaf, potato salad, and cookie meals to be given out in addition to the government subsidized foods. The church also increased its monthly collection of non-food household items such as toilet paper, diapers, and soap which were available to anyone. The Mission Committee continued to sponsor



Rev. Jack O'Hara, pastor of Holy Redeemer Catholic Church, participates in the 2008 Blessing of the Fleet in Bar Harbor. SARAH CLEMENS

8
MSCM
2008

popular fundraisers for the Grange Fuel Fund, Community Outreach, Meals on Wheels, American Cancer Society, global missions, and families with medical needs.

The Union Church celebrated music in worship, with a dedicated year-round choir which provided both Christmas and Easter Cantata concerts. With the support of their volunteer choir director and an organist, who's been playing for 70 years, the choir kept making a joyful noise to the Lord!

MINISTER TO COASTAL COMMUNITIES AND FISHERIES

Rev. Ted Hoskins continued to serve on several boards of directors of non-profit organizations working to address sustainable fishing issues along coastal Maine.

Ted worked with the Penobscot East Resource Center (PERC). Its Down East Groundfish Initiative continued to work toward a pilot project in community-based area management with the New England Fishery Management

Council. The center's Community-Fisheries Action Roundtable had an innovative training program which involved local fishermen in resource management at all levels. Ted also moderated the Collaborative Lobster Enhancement Evaluation Workshop, based at the Zone C Lobster Hatchery, and worked with the Stonington Lobster Working Group which has been seeking ideas and solutions to the lobster crisis.

Ted also worked with the Northwest Atlantic Marine Alliance. Its "Fish Locally Collaborative" took over the responsibilities of the "Area Management Coalition" with the Nature Conservancy, Island Institute, PERC, and Mid-Coast Fisherman's Association as primary participants.

Ted was also active with Coastal Access, the Island Coalition, the Working Waterfront Coalition, and the Maine Department of Marine Resources' Lobster Advisory Council. For the fourth year, he moderated the University of Maine Lobster Institute Canadian/American Lobstermen's Town Meeting held in Saint John, New Brunswick.

Youth Development

EdGE – AFTER SCHOOL AND SUMMER PROGRAMS FOR YOUTH

EdGE (Ed Greaves Education), led by Charlie Harrington, is an innovative youth development program established by the Maine Sea Coast Mission in 2002. It serves students in grades four through twelve in Downeast Maine with a combination of academic support, enrichment, mentoring, and experiential activities.

Through its diverse programming, EdGE encourages youth to stay engaged in school. It also helps them aspire towards and attain higher levels of achievement and develop or strengthen personal skills and character that will enable them to achieve success. EdGE offers after school tutoring and homework help, and year-

round enrichment activities such as visual and performing arts projects, creative writing, leadership training, innovative science and technology workshops, skill-building in math and science, and outdoor pursuits. In 2006, EdGE was recognized as the outstanding 21st Century Community Learning Center Afterschool program in Maine by the Maine After School Network.

In 2008, the EdGE after school program received a second 21st Century Community Learning Grant for expansion from six to ten school sites. The program is now in both Washington and Hancock Counties serving almost 500 children from fourth through twelfth grades in 17 downeast communities.

One of the ten school sites is Narraguagus High School. John Sawyer, Narraguagus High School principal, said,

“I would like you to know how grateful I am for the camps my kids went to this summer. The staff provided such a welcoming, warm, supportive atmosphere. As my kids ended their week of camp, they had a positive outlook and a sense of achievement.” PARENT OF AN EDGE STUDENT

Hannah Gignoux, an Ella Lewis EdGE student, displays shoes up for auction at a student-hosted fundraiser for the Ark Animal Shelter. ALLISON OUELLET

9
MSCM
2008





Milbridge student Harry Rossi challenges himself on the high ropes course at the Ed Greaves Center in Cherryfield. JORDAN CLARK

2007-2008 EdGE Facts

- In Narraguagus High School, 30 freshmen were paired with a student mentor and met weekly with them as part of the EdGE program.
- Teachers report that 98% of the EdGE students completed their homework satisfactorily.
- 81% of students increased or retained their math and language arts grades.
- Fifteen family events were held including recreation, social and academic programs.
- 84% of regularly attending EdGE students had a parent attend one or more family event.
- 81% of all EdGE students were enrolled in the free lunch program.
- 41 of the students enrolled in the free lunch program receive backpacks filled with food on Friday to get them through the weekend.
- Charlie Harrington, EdGE Program Director, was named an Afterschool Ambassador for the national organization, Afterschool Alliance.

“The EdGE program has partnered with Narraguagus High School to provide transition support for our incoming freshmen through a mentor-mentee program. This provides many at-risk students with support from an upper classman throughout the school year. This has been a very valuable experience for many of our freshmen students.”

Four outstanding young men, who are preparing to graduate, have remained involved in the EdGE since the day they entered EdGE in 2002, in the fifth grade. They are EdGE “All Stars.”

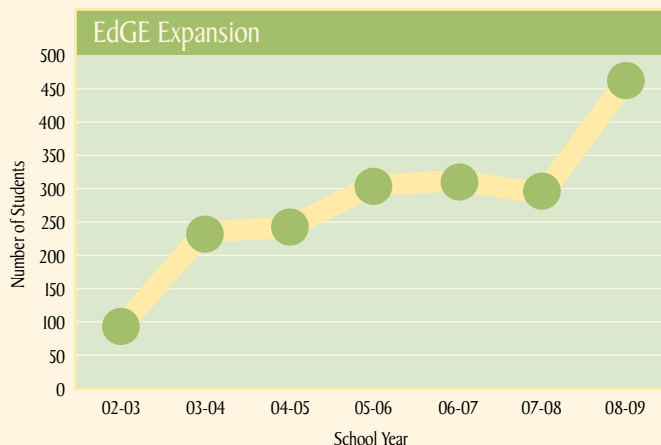
Harry Seavey was a challenging young man when he was in 5th grade. Today he has a gift for working with young people that have challenges similar to the younger Harry. He is loved and respected by all who work with him. His special gifts are evident the first moment you meet him as he smiles, shakes your hand, and asks you how your day is going. Harry will be attending Southern Maine Community College with hopes of becoming an outdoor educator and recreation manager.

Kyle Leackfeldt was a shy 5th grader in 2002. In his years with the EdGE program, he rode a bike for the first time, climbed on a ropes course, went to an overnight camp and found his strength within to take on new challenges. Kyle has earned high honors throughout his academic career. He was a member of the EdGE Advisory Council for the past five years and has worked in the program throughout high school. Maine Maritime Academy recognized Kyle’s outstanding character and abilities by offering him early acceptance.

10
MSCM
2008

EdGE Growth 2002-2008

	2002	2008
Number of EdGE sites	2	10
Grades served by EdGE	Grades 5-8	Grades 4-12
EdGE participants	91	480+
EdGE summer program	2 weeks, 2 camps	5 weeks, 21 camps
EdGE staff	4 full-time staff	7 full-time staff





Harrington Elementary School EdGE students working on "Operation Camelot" project. BILL KUYKENDALL

Ben Libby was a quiet young man when the EdGE staff first met him at the D.W. Merritt School in Addison. He was a leader in his class who led by example. He was steady and reliable and became a bike expert by his sophomore year. Ben participated in summer bike camps as a helper, then as a bike mechanic and then as a co-leader. He is knowledgeable and kind with an inner strength that will shine at Eastern Maine Community College where he plans on studying automobile mechanics.

Justin James joined the EdGE program the first day it opened at the Ella Lewis School in Steuben. He was enthusiastic and ready to be involved in anything and everything. His energy was boundless. In 9th grade Justin began volunteering in Steuben and has been an asset to the program ever since. He treats every child with kindness and respect which may be the greatest gift. Justin has grown into a mature, focused, and determined young man. He will enter the Marines in 2009 upon graduation from high school fulfilling a lifetime dream.

With the recent expansion, the EdGE hopes to make a difference in the lives of many more young people like Harry, Kyle, Ben and Justin.

SCHOLARSHIPS FOR DOWNEAST STUDENTS

In 2008 the scholarships awarded by the Maine Sea Coast Mission exceeded over \$100,000 for the first time. The scholarship committee, assisted by Terri Rodick, Scholarship Coordinator, selected 101 students from 19 different high schools to receive \$103,000 in scholarships. All together, 49 of the students were from Hancock County, 45 were from Washington County, and seven were from the islands the Mission serves in Knox and Waldo Counties. Out of the 101 scholarship recipients, 39 were freshmen and 62 were upper classmen. The Mission's scholarship is renewable each year up to four years as long as the student is in good standing at their college. The Mission also offers a \$2,000 EdGE

11
MSCM
2008

"I would like to sincerely thank you for your financial support over the last four years. My Maine Sea Coast Mission scholarship has given me many opportunities that I may not have had without it."

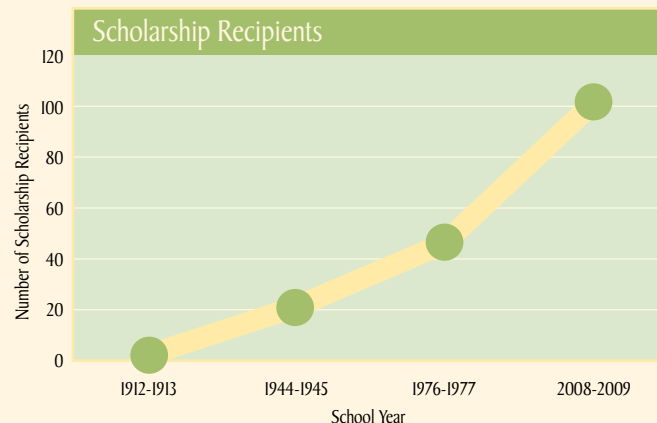
SCHOLARSHIP RECIPIENT, 2004-2008



Hannah Hudson, Maine Sea Coast Mission scholar, and sister Blair at the 2008 Scholarship Picnic. TERRI RODICK

scholarship to a student who has successfully completed the EdGE program. The 2008 recipient was Gustavo Ortiz. Brittany Ray, Guidance Director Narraguagus High School, made this observation about Gustavo: “This young man is seeking the proverbial American Dream and, with his intelligence and work ethic, he will achieve his goals. He is a leader and is respected by his teachers and by his peers.”

The third annual scholarship picnic was held on July 18, 2008. Over 65 students and parents attended and discussed the differences between high school and college life. Upper classmen shared advice about how to be successful in college.



12
MSCM
2008



Connie Greaves Bates, Mission Board Member, Charlie Harrington, EdGE Director, congratulate EdGE scholarship winner, Gustavo Ortiz at the Narraguagus High School graduation.

The Maine Sea Coast Mission has awarded \$1,402,792 in scholarships since the program's inception in 1908. This would equate to over \$3 million in today's dollars when adjusted for inflation. A brief summary of the scholarship program shows the increase in number of scholarships over the years.

- In 1912, the Maine Sea Coast Mission awarded two scholarships totaling \$218.08 for two girls to attend the Higgins Classical Institute and three island students to attend Normal School, a school that trains teachers.
- In 1929, the Mission awarded its first college scholarship.
- In 1941, the Mission awarded \$1,000 in scholarships.
- In 1980, the Mission awarded \$20,000 in scholarships.
- In 2000, the Mission awarded \$46,000 in scholarships.
- In 2008, the Mission awarded \$103,000 in scholarships.



Weald Bethel Chapel in Cherryfield. NEIL WILSON

Meeting Immediate Needs

Downeast Campus Programs

Wendy Harrington, Director of Service Programs, reported that Downeast Maine residents had a challenging year in 2008. The high cost of heating fuel, gasoline, and food, combined with the economic downturn and decline in clam flats and lobster prices, created more need and generated more requests than the Maine Sea Coast Mission had received in many years. During the last quarter of the year, demand at the Food Pantry increased by 25% and requests for emergency fuel assistance reached record numbers. The challenge was to ensure that the resources and programs located at the Downeast Campus were effectively addressing the greatest needs of Hancock and Washington County residents.

The first step towards developing a plan was to understand the needs of people within the communities served by the Mission. Through interviews and written surveys, clients and other stakeholders shared their thoughts about the Downeast Campus programs. They shared stories of how the assistance and the caring staff made a difference in their lives. The highest needs were identified as food, heating oil, and housing repair.

The programs at the Downeast Campus rose to meet the challenge. The Food Pantry, Emergency Assistance, and Housing Repair Ministry programs served a record

number of people. Downeast Campus staff, partner agencies, and over 200 community volunteers worked together to make this happen.

WEALD BETHEL CHAPEL

On the edge of the forest on the Downeast Campus is the Weald Bethel Chapel. Weald Bethel is defined as “God’s place in the forest,” and this chapel has a spiritual quality that brings that definition to life. The chapel is used for a variety of purposes. It is home to the Narraguagus Nursery School which has been located in the basement of the chapel for over twenty years. Once a month, a small group of people gathered at the chapel for a quiet day of contemplative prayer. During the winter months, the Cherryfield Congregational Church held Sunday services in the chapel. During the summer, the chapel provided shelter for church groups working with the Housing Repair Ministry. Throughout the year, workshops, meetings, community gatherings, and a weekly yoga class were also held in the chapel.

FOOD PANTRY

Serving Western Washington County

The Maine Sea Coast Mission’s Food Pantry, staffed by Gena Norgaard, Food Pantry Manager, served ten



The highest needs were identified as food, heating oil, and safe housing.

downtown communities. Last year, the Food Pantry had 138 new clients and served 1,324 households a total of 2,598 boxes of food which equates to 50,145 meals. In 2008, evening hours were added because the requests for food increased by 25% the last quarter of 2008.

The Maine Sea Coast Mission joined with other food pantries in Washington County to form the Washington County Food and Fuel Assistance Alliance (WCFFA). The goal of the group is to develop short term and long term solutions to the food and fuel crises.

Nadine is an example of a person the food pantry serves. She began coming to the pantry after she left her abusive husband. Nadine is diabetic so the Food Pantry always makes sure she has the type of food she can eat. At Christmas, the Food Pantry got a card from Nadine addressed to the "Special and kind people at the Food Pantry." Towards the end of December, the Food Pantry staff learned that Nadine had been diagnosed with colon cancer and that the cancer had spread to her liver and kidneys. Nadine's need for special food was increasingly important now. The Food Pantry managed to get some of those foods through a local church.

Nikki Hanby, longtime Food Pantry volunteer, passed away on May 4, 2008. She had answered the Food Pantry phone for 15 years. A flag was donated by a Massachusetts mission group in her memory and flies above the Food Pantry.

THRIFT SHOP

In 2008, the Maine Sea Coast Mission's Thrift Shop, staffed by Marilyn Nickson, Thrift Shop Manager, provided 47,991 items to people. This included clothing, household goods, books, toys, and furniture.

The Thrift Shop was praised for its friendly staff and high quality clothing. Yet, in many cases, its clothing was not reaching the truly needy.

To continue to meet the most critical needs within these challenging financial times, difficult decisions had

to be made. On December 3, 2008, the Thrift Shop was closed. The remaining inventory was distributed to social service agencies within Washington and Hancock Counties. They, in turn, distributed the clothing to their clients at no cost. Beginning in 2009, the Mission will provide eligible clients with clothing vouchers that can be redeemed at a retail store for new clothing and footwear. The Food Pantry will move into a larger space in the Thrift Shop building in 2009.

The Mission will not be accepting donations of used clothing, but donations of new winter wear, toys, and gift items will continue to be welcome for the Christmas Program. The board and staff of the Maine Sea Coast Mission want to thank the many people who donated clothing for the Thrift Shop.

HOUSING REPAIR PROGRAM

The Housing Repair Ministry continued to grow in 2008 and had its largest volunteer base ever. During the summer, ten groups assisted in weatherizing projects and other repair projects. 157 volunteers helped to weatherize 17 homes and repair eight homes. These volunteers provided 4,422 hours of work throughout the summer. A group from Massachusetts, which volunteered for the past six years, came a second time on Columbus Day weekend to help weatherize as many homes as they could before winter.

In 2008, the Maine Sea Coast Mission decided to focus its housing repair on the weatherization of homes. Under the leadership of Scott Shaw, Housing Repair Program Coordinator, volunteers worked on homes that were poorly insulated, had cold air flowing through old windows, or cold air coming in through the floor of their trailer or home. With insulation, energy efficient windows, and a clean furnace, homeowners saw significant savings in energy costs.

The Maine Sea Coast Mission obtained a \$10,000 grant from Eastern Maine Funders for its housing repair ministry to weatherize homes. On November 15, 2008,



All Saints' Anglican Church from Amesbury, MA and Byfield Community Church from Byfield, MA volunteers paint an elderly couple's home in Cherryfield. SCOTT SHAW

42 volunteers, including professional contractors and a window expert, shared their time and talent to make 41 homes warmer. This project was a true community activity. The University of Maine Cooperative Extension provided "Keep ME Warm" kits. The volunteers installed 45 windows in five homes, distributed and installed 28 "Keep ME Warm" kits, insulated or banked 12 homes, and cleaned 22 furnaces.

A recipient reported that she saw a tremendous difference in the warmth of her home after it was weatherized by the Maine Sea Coast Mission. She saw a savings in her fuel bill and was able to make her home more comfortable. Last year, she could only afford to set the thermostat at 58 degrees and was very cold. This year, she was able to afford to increase it to a more comfortable 62 degrees.

Another recipient stated that they only used two cords of wood this year after the new windows were installed, quite a bit less than last year at this time. They also said that there were no more drafts.

SENIOR COMPANION PROGRAM

The Maine Sea Coast Mission's Senior Companion Program, staffed by Gena Norgaard, Senior Companion Program Coordinator, serves elderly residents in Western Washington County and is a station for the Senior Companion Program of the University of Maine Cooperative Extension. The University provides a stipend to individuals 60 years of age or older, particularly those on limited incomes, who are hired as Senior Companions.

The Senior Companions touch the lives of adults who need extra assistance to live independently in their own homes or communities. They serve low income, elderly individuals who are homebound, have disabilities, terminal illnesses, or require nursing care after an extended hospital stay. Six Senior Companions were assigned to the Mission. Twice a week they visited their clients and helped them in basic, but essential, ways such as offering assistance with simple chores, grocery shopping, transportation to medical and other appointments, and food delivery from the Maine Sea Coast Mission Food Pantry.



SUNBEAM V at Isle au Haut at Christmas.

16
MSCM
2008

Each senior companion knows that the greatest gift they offer is friendship and a break from the loneliness their clients live with everyday whether they live at home or in a nursing facility. In 2008, the Mission's six companions brightened the lives of 48 people in western Washington County.

Mission-Wide Programs

EMERGENCY FINANCIAL ASSISTANCE

"Could you help me with heat?" a lady calling in for fuel assistance asked. She sounded in need. Wendy Harrington, Director of Service Programs, explained that the Maine Sea Coast Mission provides heating assistance to eligible people who live in Washington and Hancock Counties. The lady was very pleased. This would help her stay warm for a while longer.

In 2008, 286 households received fuel assistance. This assistance helped during those desperate times before a family's fuel assistance benefit from the state is approved or just after it is depleted and the snow is still on the

ground. The high number of requests highlighted the extent of the economic crisis in Downeast Maine. Jobs were scarce and the cost of heating a home was beyond the means of our most needy neighbors.

In 2008, an AmeriCorps member, Corey Grout, was assigned to the Maine Sea Coast Mission to assist the fuel assistance program. She said, "In my position at the Maine Sea Coast Mission, I talk to people everyday who are in need. I spoke with a woman who is living in a camper which does not have any electricity and is only equipped with a small propane stove for cooking and heat. She was wondering how she would stay warm for the winter... I never realized that people lived like this in Maine. AmeriCorps has taught me that there is a lot of service work to be done in the continental United States."

The Mount Desert Island Community Campfire Coalition was created in October by the Harbor House in Southwest Harbor. The coalition addressed the growing need of heating assistance on Mount Desert Island. The partnership consists of the Harbor House,

“I want to thank you for my wonderful and practical gifts you gave me for Christmas. I’m 93 years old, a widow living alone, and you surely brought a bright spot in my day.” CREDIT



the Neighborhood House in Northeast Harbor, and the Maine Sea Coast Mission. It is supported by the four towns on Mount Desert Island; Bar Harbor, Tremont, Mount Desert and Southwest Harbor. The Maine Sea Coast Mission received the donated funds, sent letters of appreciation to the donors, received and processed the applications for assistance, scheduled the fuel deliveries with an oil company, and paid the oil company. This year almost \$20,000 was raised to help families and individuals on Mount Desert Island with heating oil.

BREAD OF LIFE FOOD PANTRY

Serving Swan's Island, Frenchboro and Matinicus

Due to the sharp decline of the lobster industry in 2008, the Bread of Life Food Pantry served many new families. Fuel costs and bait prices increased while wholesale lobster prices declined. In addition, Swan's Island has one of the highest electrical rates in Maine. Many people were faced with buying fuel oil, medicines, or food. The Bread of Life Food Pantry was much appreciated. Many families with children came to the food pantry because they could not meet their basic needs. Kitchen cabinets were almost empty. The food pantry provided these families with the food they needed.

In 2008, over 25,000 pounds of food was delivered. The Bread of Life Food Pantry got its food from Good Shepherd Food Banks in Brewer and Auburn. Additional food was donated by Hannaford, Sam's Club, and Washington Hancock Community Agency. Also, blankets were donated and given out to families to help them keep warm during the cold winter months. Rev. Ken Dutille, Bread of Life Food Pantry Manager, and many volunteers prepared the food boxes and delivered food to Swan's Island residents throughout the year. The Maine Sea Coast Mission's vessel, *Sunbeam V*, provided transportation of food from the Bread of Life Food Pantry to the islands of Frenchboro and Matinicus.

CHRISTMAS PROGRAM

The Christmas Program, staffed by Julie Patton, provided 18,000 gifts to 3,000 children and elderly in Downeast Maine in 2008. This immense task was accomplished through the generosity of both the Mission's donors and its dedicated volunteers. Four hundred children enrolled in Head Start received a pair of mittens, a coloring book, crayons, and a small toy. Six hundred nursing home residents received a gift hand-selected by one of their caregivers. The remaining 2,000 recipients were each provided with a thoughtful package of about six hand selected gifts which were selected and wrapped by a caring volunteer.

The Christmas Program approached the 2008 holiday season with a bit of apprehension. With the recent economic downturn, the number of donations appeared to be decreasing. However, as Christmas rapidly approached, new donations arrived daily. The donations didn't come in the large boxes like previous years, but in small bags, and even in large envelopes. One small package contained a pair of hand-knit mittens. The package was small but it contained a huge amount of hope.

Many Christmas Program volunteers return again and again. For example, Mrs. Lenny Sweet has worked tirelessly for the last four years to help guarantee the program's success. In 2008, she spent 155 hours sorting gifts, assembling packages, and helping other volunteers. Her demeanor is always positive and her presence a gift. She even asked her four generous children and their partners to donate to the Christmas Program in lieu of buying her Christmas presents. With the gift cards they contributed, the Christmas Program was able to purchase some of the more needed items such as men's gloves.

The example of Mrs. Sweet and her family is a true measure of the Christmas Program's importance not only to the receiver, but to the giver as well. 2009 may bring further challenges, but with dedicated donors and volunteers, the program is guaranteed to succeed.

Financial Statements 2008

The financial information presented on this page is derived from the Maine Sea Coast Mission's financial statements, audited by Foster, Carpenter, Black & Co., LLP, Certified Public Accountants, of Bangor, Maine. Copies of the full report may be obtained by contacting the Mission at 207.288.5097.

Statement of Financial Position

ASSETS

Current Assets	26,377,000
Long-term Assets	2,705,000
TOTAL ASSETS	29,082,000

LIABILITIES AND NET ASSETS

Current Liabilities	121,000
Long-term Liabilities	15,000
Net Assets	28,946,000
TOTAL LIABILITIES and NET ASSETS	29,082,000

Statement of Activities

OPERATING REVENUE, GAINS AND OTHER SUPPORT

Contributions, Events and Grants	797,000
Program Revenues	69,000
Dividend and Interest Income (Net)	277,000
Endowment Draw	1,566,000

TOTAL OPERATING REVENUE, GAINS AND OTHER SUPPORT	2,709,000
---	------------------

OPERATING EXPENSES

PROGRAM SERVICES

Island Outreach	690,000
Youth Development	897,000
Meeting Immediate Needs	696,000
TOTAL PROGRAM SERVICE EXPENSE	2,283,000

SUPPORT SERVICES

Fundraising and Public Relations	332,000
Management and General	293,000
TOTAL SUPPORT SERVICE EXPENSE	625,000

TOTAL OPERATING EXPENSE	2,908,000
--------------------------------	------------------

CHANGE IN NET ASSETS FROM OPERATIONS	(199,000)
---	------------------

NON-OPERATING INCOME, GAINS AND LOSSES

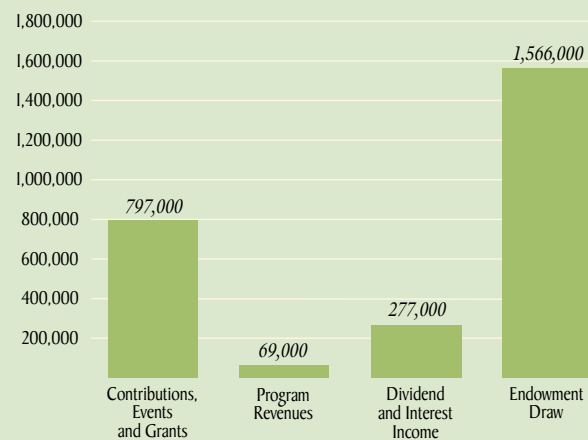
Restricted Contributions	1,428,000
Restricted Grants	168,000
Restricted Investment Income	83,000
Restricted Investment Gains and Losses	(2,358,000)
Unrestricted Investment Gains and Losses (Net of Draw)	(8,641,000)

CHANGE IN NON-OPERATING NET ASSETS	(9,320,000)
---	--------------------

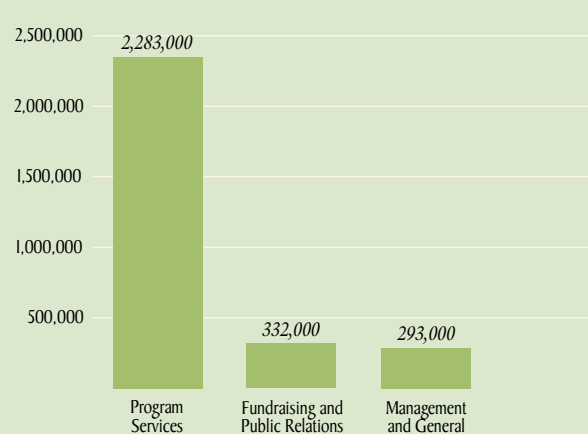
INCREASE (DECREASE) IN TOTAL NET ASSETS	(9,519,000)
NET ASSETS – BEGINNING OF YEAR	38,465,000

NET ASSETS – END OF YEAR	28,946,000
---------------------------------	-------------------

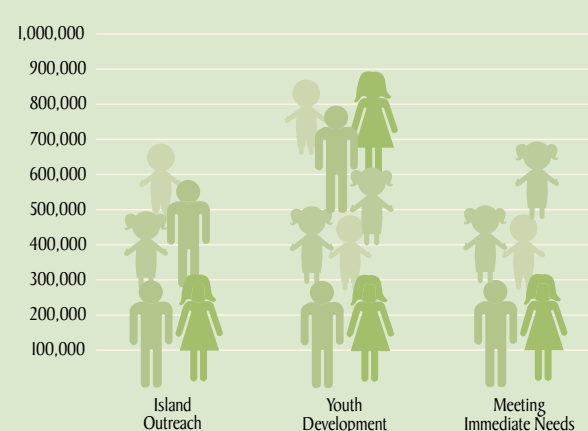
Operating Revenue



Operating Expenses



Total Program Expenses



18
MSCM
2008

100% of all contributions go to support Maine Sea Coast Mission programs.
Administration and fundraising expenses are funded by income from the Mission endowment.

2008 Donors

\$100,000+

The Barr Foundation
Mr. and Mrs. Tristram C. Colket, Jr.

\$25,000-\$99,999

Anonymous (1)
Bar Harbor Bank & Trust
Mrs. Cornelia Greaves Bates
Mr. and Mrs. George T. Shaw

\$10,000-\$24,999

Anonymous (1)
Mrs. Charlotte T. Bordeaux
Mr. and Mrs. Christopher Branson
C.F. Adams Charitable Trust
Mr. and Mrs. Lester L. Coleman
Mr. and Mrs. William E. Eason, Jr.
Mr. and Mrs. Joseph G. Fogg, III
Ambassador and Mrs. Charles A. Heimbold, Jr.
Mr. and Mrs. David K. McKown
Sigma Kappa Foundation, Inc.
Mr. and Mrs. Robert D. Stillman
Mrs. Marjorie D. Twombly
United Way of Eastern Maine
Mr. and Mrs. Gavin H. Watson, Jr.

\$5,000-\$9,999

Anonymous (3)
Mr. and Mrs. John H. Carman
Cornelia Cogswell Rossi Foundation, Inc.
Mrs. Edith R. Dixon
Mr. and Mrs. Fowler-Greaves
Ms. Patricia Greaves
Mr. George A. Hambrecht
Mrs. Henry F. Harris
Mr. and Mrs. Sterling Hitchcock
Mr. and Mrs. Joseph F. Huber
Mr. Peter Hunt
Mr. and Mrs. David P. Ingram
Jasper Wyman & Son
Maine Community Foundation
Wayanee Fund
Margaret Dorrance Strawbridge
Foundation II
Mr. and Mrs. John K. Marshall
Mary Dexter Chafee Fund
Prime, Buchholz & Associates, Inc.
Mrs. Jean O. Robinson

Mrs. Diana Davis Spencer
The First
Town of Southwest Harbor
Town of Swan's Island
Rev. Lynda Tyson and
Mr. Charles R. Tyson
Mr. and Mrs. Charles B. Wakeman
Ms. Marianna L. Welles

\$1,000-\$4,999

Anonymous (1)
Acadia Corporation
Dr. Charles B. Alexander and Mr. Timothy McCormick
All Saints' Anglican Church, Amesbury, MA
Ann Arbor Area Community Foundation
Atlantic Acceptance Corp.
Mr. Alan L. Baker
Bar Harbor (MDI) Rotary Club
Mr. and Mrs. Russell S. Beede
Mr. and Mrs. Fred S. Benson
Mr. and Mrs. Stephen B. Bergson
Mr. Edward McC. Blair
Mr. and Mrs. Curtis L. Blake
Mr. and Mrs. Kenneth H. Brownell
Mrs. Margaret Buchanan
Mr. and Mrs. Ordway Burden
Mr. and Mrs. Reynolds Burgund
Mrs. Leone J. Burrage
Mr. Charles C. Butt
Cadillac Builders, LLC
Mrs. Billie Cargile
Mrs. Mary A. Chenoweth
Christ Church of Dark Harbor, Islesboro, ME
Church of the Redeemer, Sorrento, ME
Mr. and Mrs. Roger S. Clapp
Coastal Kayaking Tours & Acadia Bike & Canoe
Mr. and Mrs. Kenneth H. Colburn
Mr. and Mrs. John M. Cooper, Jr.
Ms. Vickie L. Cooper
Mrs. Sylvia Y. Cough
Mr. and Mrs. Jim B. Cox
Mr. Archibald Cox, Jr. and Mrs. Judy Gordon Cox
Cranberry Isles Congregational

Church, ME
Mr. William N. Creasy, Jr.
Mr. Jock Crothers and Ms. Lisa Heyward
Mr. and Mrs. David A. Davis
Dead River Company
Rev. and Mrs. Gary A. DeLong
Mrs. Josephine H. Detmer
Mrs. Douglas Dillon
Downeast Resource Cons. and Dev. Council
Mrs. Ruth B. Durfee
E.L. Shea Inc.
Eaton Peabody
Emergency Food and Shelter Program
Mrs. Ellen H. Emery
Mr. Benjamin R. Emory and Dr. Dianna Emory
Evangelical United Methodist Church, New Holland, PA
Mr. and Mrs. David P. Falck
First Congregational Church, Nantucket, MA
First Congregational Church, Westfield, MA
Ms. Jane Gaffney
Ms. Lorraine Gawronski and Mr. Edward L. Allen
Geddy's
Ms. Sally A. Gibson
Mr. and Mrs. Sheldon M. Goldthwait
Mr. and Mrs. Evan R. Goley
The Rt. Rev. and Mrs. J. Clark Grew, III
Mrs. L. P. Griscom
Gurnee Community Church, IL
Mrs. Polly Hall-Burley
Mrs. Patricia A. Hanlon
Harbor House
Mr. and Mrs. Harold Hatch
Ms. Beverly I. Healy
Mr. and Mrs. Winston R. Hindle, Jr.
Mr. and Mrs. Robert K. Ho
Mr. John C. Hoffmann
Mr. and Mrs. Jeffrey S. Horowitz
Mr. and Mrs. Henry E. Hosley, III
Mr. and Mrs. William M. Houldin, Jr.
Incarnation Church UCC Newport, PA
J.T. Rosborough, Inc.
Mr. and Mrs. L. Oakley Johnson

Mr. and Mrs. H. Lee Judd
Mr. Charles R. Keen
Kimball Shop & Boutique
Mr. and Mrs. E. Robert Kinney
Mr. and Mrs. Philip B. Lape
Mr. Richard Loutzenheiser and Ms. Lorraine L. Edwards
Machias Savings Bank
Mrs. Miriam E. Malkasian
Manor House Inn
Mr. and Mrs. C. Keith Martin
Mr. and Mrs. Clement E. McGillicuddy
Mr. and Mrs. Robert F. McKown
Mr. and Mrs. Dana G. Mead
Milbridge-Cherryfield Rotary Club
Milbridge Congregational Church, ME
Mr. and Mrs. Gerrish H. Milliken
Sen. and Mrs. George J. Mitchell
Mrs. Justine M. Morris
Morrison Chevrolet, Inc.
Mr. and Mrs. Joseph M. Murphy
Mr. and Mrs. John D. Myles
Mr. and Mrs. Henry E. Niemitz
Ambassador and Mrs. Chester E. Norris, Jr.
North Haven Summer Services, Inc.
Mrs. Margaret Pearson
Mr. and Mrs. Nils P. Peterson
Mr. and Mrs. Daniel Pierce
Mr. and Mrs. Christopher J. Pope
Mr. and Mrs. Daniel P. Poteet, II
Mr. and Mrs. Jon L. Prime
R.H. Foster Energy, LLC
Mr. and Mrs. Stephen Resotko
Miss Claire A. Richardson
RNK Products, Inc.
Mr. and Mrs. George G. Robertson
Mrs. Cornelia L. Robinson
Mr. and Mrs. John R. Robinson
Mr. Robert A. Roth
Rev. and Mrs. Carlton T. Russell
Mr. and Mrs. Timothy P. Schieffelin
Mr. and Mrs. John D. Schlegel
Mr. Henry L.P. Schmelzer and Ms. Cynthia Livingston
Mr. Peter B. Schwab
Second Baptist Church Sewing Society, Islesboro, ME
Ms. Tracy L. Shaffer

Mr. and Mrs. Henry D. Sharpe, Jr.
Small Animal Clinic
Mr. Karl Smith and Ms. Julie Canniff
Mr. and Mrs. Stockton N. Smith
Mr. and Mrs. Craig Snapp
Dr. and Mrs. Richard W. Snodgrass
Snowman Printing & Presort Express
Mrs. Ann R. Soltesz
Mr. and Mrs. Phineas Sprague
Squirrel Island Chapel Assn., ME
St. George's Episcopal Church, York, ME
St. Mary St. Jude's Rectors, Northeast Harbor, ME
Mrs. Henrietta F. Stewart
Mr. and Mrs. Tim Stewart
Mr. and Mrs. William P. Stewart
Ms. Isabel F. Thacher
The David Rockefeller Fund, Inc.
The Jackson Laboratory
The Parish of Christ Church, Greenwich, CT
The Wyeth Foundation
Mr. and Mrs. John Thompson
Town of Bar Harbor
Town of Mount Desert
Mr. and Mrs. Glenn G. Tucker
Ms. Marie E. Underwood
Union Trust, a division of Camden National Bank
Mr. Richard C. Valentine
Mr. and Mrs. Philippe A. Van Marcke
Mr. and Mrs. Casper W. Weinberger, Jr.
Dr. Katherine Wellman
Mr. Douglas Williams
John Williams Boat Yard
Mr. Stuart Woods

\$500-\$999

Anonymous (3)
American Capital Management, Inc.
Mr. and Mrs. James M. Anderson
Dr. Susan R. Austin
Bangor Hydro-Electric Company
Mr. and Mrs. William A. Bartovics
Ms. Sarah W. Beechler
Mr. and Mrs. Charles A. Benore
Big Woods Congregational Church, IL
Mr. Gordon Bok and Ms. Carol Rohl

Peninsula EdGE students engrossed in a game of chess. SUZIE JAMES



Mr. and Mrs. Edward S. Bromage
Mrs. Lucy A. Burr
Mrs. Justine M. Caldwell
Cappy's Chowder House
Mr. and Mrs. Henry E. Clay, Jr.
Mr. James W. Cochran
Ms. Madeleine G. Corson

Ms. Malen R. Hsu
Mr. and Mrs. Joseph M. Hughes
Jordan-Fernald Funeral Home
Mr. Angus S. King, Jr. and
Ms. Mary J. Herman
Mr. C. L. Kirkpatrick
Mr. George G. Lewis

Mr. Robert K. Stewart
Mr. Alexander J. Suess
Mr. Richard Tardiff and
Ms. Pamela VanWechel
Mr. and Mrs. Norcross Teel, Jr.
The Bait House
The Ellsworth American
The First Church of Christ,
Longmeadow, MA
Ms. Joan P. Tilney
Mr. and Mrs. Frederic Towers
Dr. Christine Twining
Mr. and Mrs. Hans P. Utisch
Mr. and Mrs. Doninicus Valiunas
Mr. John W. L. White
Mr. and Mrs. Winston H. White
Mr. and Mrs. Ernest A. Whitehouse
Mr. and Mrs. Donald J. Williams
Wilson Memorial Chapel,
E. Boothbay, ME
Ms. Nancy C. Woodward
Mr. and Mrs. B. Conley Worcester, Jr.
Mrs. Jane S. Zirkilston

Dr. and Mrs. Llewellyn B. Bigelow
Ms. Ruth Binder and
Mr. Darwin Heme
Ms. Norene R. Bishop
Mr. and Mrs. Harry Bissell
Mr. and Mrs. Bruce B. Blake
Ms. Judith A. Blake
Mr. and Mrs. Benjamin Blaney
Mr. and Mrs. Richard M. Blaney
Mr. and Mrs. Arthur J. Blank
Ms. Susanne E. Bogart
Dr. and Mrs. Robert C. Bone
Dr. and Dr. Alan R. Booth
Mrs. Florence Borda
Mr. and Mrs. James E. Bousfield
Mr. Robert Bowman and
Ms. Lori Tradewell
Mr. John W. Brace
Mr. and Mrs. William Bracken
Mr. and Mrs. Harry Brawley
Mr. and Mrs. C. H. Breedlove
Ms. Dorothy M. Bricker
Mrs. Patricia M. Briska
Mr. and Mrs. Burrow Brooks
Dr. and Mrs. David C. Brooks
Ms. Jean R. Brown
Mr. and Mrs. Mark Brown
Mr. and Mrs. Shepard Brown
Mr. Ashley Bryan
Mr. and Mrs. Roy Bryant
Mr. and Mrs. William H. Buchanan, Jr.
Mr. and Mrs. Gerald E. Buckwalter
Mrs. Kelly Buffington
Mr. and Mrs. Robert Buhner
Mr. Richard H.D. Bullock and
Ms. Carol E. Woolman
Ms. Carol J. Bult
Ms. Ellen M. Bunker
Mrs. Harriet B. Burnham
Capt. and Mrs. Ernest H. Burt, Jr.
Mr. and Mrs. Roc R. Caivano
Ms. Mary A. Callahan
Ms. Joan C. Campbell
Mr. and Mrs. Mark D. Campbell
Mr. and Mrs. Salvatore Carabetta
Ms. Francine Carraro
Mr. and Mrs. Dale L. Carter
Ms. Gail Caruso and Mr. William Green
Dr. and Mrs. Bruce R. Cassidy
Mr. Brandon W. Caswell
Mr. and Mrs. Richard H. Catlett, Jr.
Ms. Esther L. Cavanaugh
Centre Street Congregational Church,
Machias, ME
Mr. Dean Cerutti and Ms. Angela Festa
Mr. and Mrs. Alan C. Chapman
Cherryfield Foods, Inc.
Mr. and Mrs. Morris Cheston, Jr.
Mr. and Mrs. Eric Chetwynd, Jr.
Christ Church, Kennebunk, ME
Dr. and Mrs. Leonard R. Ciuffreda
Mr. and Mrs. Maynard G. Clemons
Cleveland H. Dodge Foundation, Inc.
Ms. Sally F. Clifford
Mr. and Mrs. James L. Clunan
Mr. and Mrs. Lawrence H. Coffin
Ms. Marsha A. Cohen
Mr. and Mrs. Ira G. Colby, III
Mr. and Mrs. Francis I.G. Coleman
Mr. John Collier and
Mrs. Susan Ferrante-Collier
Mr. and Mrs. James S. Collins

Mr. and Dr. Thomas R. Collins
Mr. and Mrs. C. W. Comer
Congregational Church,
Matineus, ME
Dr. and Mrs. John D. Constable
Mr. and Mrs. Warren Cook
Ms. Deborah J. Corey
Cornwall Woman's Society,
UCC, CT
Dr. and Mrs. Louis R. Cos
Mrs. Ruth E. Cox
Rev. and Mrs. Robert O. Crabbs
Mr. and Mrs. Richard J. Crandall
Mr. and Mrs. J. Max Creswell
Ms. Mary C. Crichton
Mr. Matthew J. Cullen, Jr.
Mr. Garrett Curry and Ms. Carla Ganiel
Ms. Patricia S. Curtis
Dr. and Mrs. Robert W. Daly
Sen. and Mrs. Dennis S. Damon
Mr. and Mrs. James D. Darby, Jr.
David Community Church, Osage, IA
Mr. Joseph P. Day
Mrs. Anne P. Reed Dean
Mr. Joseph P. Dearborn
Mr. and Mrs. Dickinson R. Debevoise
Mr. and Mrs. John J. Delany, III
Mr. Leonard J. DeMuro and
Ms. Rita E. Johnston
Mr. and Mrs. John A. DeTurris
Mr. Paul Devore
Ms. Deborah DeWalt
Mr. and Mrs. Charles D. Dickey, Jr.
Mr. and Mrs. S. Whitney Dickey
Mr. and Mrs. William F. Dohmen
Mr. and Mrs. David Donovan
Mr. and Mrs. Charles Dorr
Dr. James Dorsch and
Dr. Maureen Giuffre
Mr. and Mrs. Malcolm H. Dow
Mr. and Mrs. Damien Doyle
Ms. Mary C. Drury
Mr. Thomas D. Duchesneau and
Ms. Caroline A. Dane
Mr. and Mrs. Richard J. Duffy
Ms. Carol M. Duhme
Mr. and Mrs. Donald C. Duncan
Mr. and Mrs. Yvan E. Dupuy
Ms. Cynthia B. Dutton
Mr. James Dyke and
Mrs. Helen L. Porter
Mr. and Mrs. Lawrence C. Eaton
Dr. and Mrs. Murray Eden
Edgecomb Congregational Church, ME
Mr. and Mrs. Thomas K. Edwards
Mr. Jon Edwards and Ms. Nancy Fox
Mr. and Mrs. Charles H. Egerton
Elijah Kellogg Church, Harpswell, ME
Ms. Cynthia L. Ellis
Mrs. Celia P. Emmons
Engineering Consultants,
Ellsworth, ME
Ms. Elizabeth A. Ennis
Mrs. Celia K. Erskine
Mr. and Mrs. Frederick C. Evering
Faith United Methodist Women,
Columbia, ME
Mr. Robert H. Farson
Mr. and Mrs. Michael E. Fawley
Federated Church, Thomaston, ME
Mrs. Anna M. Fernald
Mr. and Mrs. H. Allen Fernald



SUNBEAM V docked at Frenchboro. BILL KUYKENDALL

20

Ms. Sally Scully Crock
Mr. and Mrs. John S. Crompton
Ms. Barbara O. David
Dr. Richard C. Dimond, MD
Mr. and Mrs. Alexander
Doudoumopoulos
Down River Theatre Company
Mr. and Mrs. Ford B. Draper, Jr.
Duck Trap Woodworking
Eden Athletics
Mrs. Sylvia M. Erhart
Mr. and Mrs. Gordon I. Erikson
First Congregational Church,
Blue Hill, ME
First Congregational Church UCC,
Camden, ME
First Parish Congregational Church
UCC, Yarmouth, ME
Dr. and Mrs. Allen M. Fisher
Rev. and Mrs. Fred S. Foerster
Ms. Elizabeth C. Forster
Dr. and Mrs. Richard R. Fox
Mr. and Mrs. W. West Frazier, IV
Mr. Gregory Frosberg and
Ms. Mary C. Cary
Mr. and Mrs. Murray Gartner
Mr. and Mrs. Thomas K. Glenn, II
Mr. and Mrs. Daniel Goldthwait
Ms. Charlotte H. Gowen
Ms. Gayle E. Hanby
Mr. and Mrs. Victor Hand
Mr. Robert Douglas Henderson and
Ms. Kerri Lynn Ratcliffe
Ms. Laura M. Hiestand
Mrs. Mary S. Hockmeyer

Lyman Pope, Jr. Foundation
Mr. and Mrs. Nigel S. MacEwan
Mr. and Mrs. Hugh C. Macgill
Machias Business Group
Mr. and Mrs. Stanley A. Martin
Mr. and Mrs. John C. Maxwell, Jr.
MDI Tomorrow
Mount Desert Island Hospital
Mr. and Mrs. Donal B. Murphy
New Land Nursery & Landscaping
Mr. and Mrs. Fred Osborn, III
Mr. and Mrs. John H. Page
Mr. Richard G. Pankuch and
Ms. Donna K. Smith
Mr. and Mrs. Donald C. Parker
Parker Lumber Company, Inc.
Mr. Richard W. Pendleton, Jr.
Mr. Robert Polhemus and
Ms. Carol Shloss
Mr. and Mrs. Richard S. Post
Mr. and Mrs. Stephen H. Richards
Rockland Congregational Church, ME
Mr. Paul H. Rogers
Ms. Ruth Rossi
Mrs. Carol Rush
Mr. Harry Russell, Jr.
Salmon Point Sunbeam Fair
Mr. and Mrs. J. Thomas Schanck
Ms. Priscilla Schumrick
Mr. and Mrs. Ronald W. Scott
Mr. and Mrs. Chadbourn H. Smith
Ms. M. Elizabeth Smith
Southern Ocean Congregational
Church, NJ
Stanley Subaru

A **\$100-\$499**
Anonymous (4)
Ms. Alice Reid Abbott
Mr. and Mrs. Michael N. Abodeely, Jr.
Acadia Senior College
Mr. and Mrs. Charles F. Adams, III
Mr. and Mrs. Robert P. Adelman
Ms. Phillida M. Alcantar
Ms. Maitland Alexander
Alfred Parish Church, UCC, ME
Mr. and Mrs. Donald D. Allen
Ms. Susan K. Allen
Ms. Stefanie Alley
Mr. David A. Aloise
Mr. and Mrs. Wallace M. Alston, Jr.
Mrs. Ruth C. Amrein
Ms. Janet Anderson
Ms. Joellen Anderson
Ms. Margot E. Anderson
Mr. and Mrs. Gordon G. Angell
Mr. and Mrs. William S. Arata
Mr. and Mrs. Thomas M. Armstrong
Mrs. Grace W. Arnold
Mrs. Ellen T. Asherman
Rev. and Mrs. Donald Ashmall
Ms. Anne Elise Aubry
Mr. and Mrs. Jack F. Ayers
Mr. and Mrs. Donald Bailey
Mr. and Mrs. Francis Ballard
Mr. Francis D. Baltzell
Mr. and Mrs. Jeff J. Barratt
Mr. and Mrs. Walter J. Barrett
Mrs. Patricia Bartlett
Mr. and Mrs. Robert C. Bartlett
Mr. and Mrs. Jarvis S. Barton
Mr. and Mrs. N. Scott Bates
Mr. H. B. Beach
Mr. and Mrs. John L. Beaman
Mr. and Mrs. Ray E. Becker
Mr. and Mrs. Eric S. Beckjord
Mr. and Mrs. Henry P. Becton
Dr. Paul Beisswenger and
Ms. Carolynne Krusi
Ms. Katherine M. Bell
Mr. and Mrs. Philip G. Bennett
Mr. B. Allan Benson and
Ms. Nancy Hill
Mrs. Carol S. Bergeson

C
Ms. Alice Reid Abbott
Mr. and Mrs. Michael N. Abodeely, Jr.
Acadia Senior College
Mr. and Mrs. Charles F. Adams, III
Mr. and Mrs. Robert P. Adelman
Ms. Phillida M. Alcantar
Ms. Maitland Alexander
Alfred Parish Church, UCC, ME
Mr. and Mrs. Donald D. Allen
Ms. Susan K. Allen
Ms. Stefanie Alley
Mr. David A. Aloise
Mr. and Mrs. Wallace M. Alston, Jr.
Mrs. Ruth C. Amrein
Ms. Janet Anderson
Ms. Joellen Anderson
Ms. Margot E. Anderson
Mr. and Mrs. Gordon G. Angell
Mr. and Mrs. William S. Arata
Mr. and Mrs. Thomas M. Armstrong
Mrs. Grace W. Arnold
Mrs. Ellen T. Asherman
Rev. and Mrs. Donald Ashmall
Ms. Anne Elise Aubry
Mr. and Mrs. Jack F. Ayers
Mr. and Mrs. Donald Bailey
Mr. and Mrs. Francis Ballard
Mr. Francis D. Baltzell
Mr. and Mrs. Jeff J. Barratt
Mr. and Mrs. Walter J. Barrett
Mrs. Patricia Bartlett
Mr. and Mrs. Robert C. Bartlett
Mr. and Mrs. Jarvis S. Barton
Mr. and Mrs. N. Scott Bates
Mr. H. B. Beach
Mr. and Mrs. John L. Beaman
Mr. and Mrs. Ray E. Becker
Mr. and Mrs. Eric S. Beckjord
Mr. and Mrs. Henry P. Becton
Dr. Paul Beisswenger and
Ms. Carolynne Krusi
Ms. Katherine M. Bell
Mr. and Mrs. Philip G. Bennett
Mr. B. Allan Benson and
Ms. Nancy Hill
Mrs. Carol S. Bergeson

E
Mr. and Mrs. Lawrence C. Eaton
Dr. and Mrs. Murray Eden
Edgecomb Congregational Church, ME
Mr. and Mrs. Thomas K. Edwards
Mr. Jon Edwards and Ms. Nancy Fox
Mr. and Mrs. Charles H. Egerton
Elijah Kellogg Church, Harpswell, ME
Ms. Cynthia L. Ellis
Mrs. Celia P. Emmons
Engineering Consultants,
Ellsworth, ME
Ms. Elizabeth A. Ennis
Mrs. Celia K. Erskine
Mr. and Mrs. Frederick C. Evering
Faith United Methodist Women,
Columbia, ME
Mr. Robert H. Farson
Mr. and Mrs. Michael E. Fawley
Federated Church, Thomaston, ME
Mrs. Anna M. Fernald
Mr. and Mrs. H. Allen Fernald

Mr. and Mrs. Thomas J. Fernald
Mr. Franklin Fifield and
Ms. Corrine Canavan-Fifield
First Churc. Belfast, ME
First Congregational Church,
East Haven, CT
First Congregational Church,
Hanson, MA
First Congregational Church,
Women's Fellowship
Millinocket, ME
First Congregational Church,
N. Anson, ME
First Congregational Church,
S. Paris, ME
First Congregational Church,
Scarborough, ME
First Congregational Church, UCC,
Farmington, ME
First Congregational Church, UCC,
Hanover, MA
First Parish Congregational Church,
York, ME
First Presbyterian Church, Titusville, NJ
Mr. and Mrs. Julian D. Fischer
Mr. and Mrs. Robert J. Flynn
Mr. and Mrs. Christopher A. Fogg
Founders Congregational Church,
Harwinton, CT
Ms. Mary-Anna Fox
Drs. Samuel and Mary Alice Fox
Mr. Michael T. Friel
Mr. and Mrs. Richard G. Fuerst, Jr.
Mr. and Mrs. Charles A. Fuciniti
Ms. Nancy J.J. Gabrielson
Mr. and Mrs. John M. Galipeau
Gallagher's Salon
Mr. and Mrs. Jose N. Gamez
Ms. Ruth K. Gannaway
Garden Club of Mt. Desert
Gardens By Design
Gardiner Savings Institution
Dr. Jane W. Garfield
Ms. Patricia L. Geiger
Mr. and Mrs. Nicholas T. Genimatas
Mrs. Barbara Vinal Gent
Mrs. Sherry Geyelin
Mr. and Mrs. Charles H. Geyer
Mr. and Mrs. John R. Gilbert
Mr. and Mrs. John R. Gilchrist
Mr. and Mrs. Robert L. Gilfillan
Mr. and Mrs. William L. Gilfillan
Mr. and Mrs. Archibald L. Gillies
Dr. and Mrs. Edward B. Gilmore
Mr. and Mrs. Ed T. Girvin
Mr. and Mrs. Robert Goble
Mrs. Anne C. Godfrey
Mr. and Mrs. Charles P. Gogolak
Ms. Mary Cox Golden
Ms. Ann Gorham
Dr. Joel Graber
Mrs. Margaret F. Grace
Mr. and Mrs. John P. Grace Shethar
Mr. Andrew R. Grainger
Mr. and Mrs. W. Arthur Grant
Mr. Philip Grausman
Ms. Beverly C. Gray
Ms. Nicole L. Gray
Mr. and Mrs. Paul F. Gray
Mr. and Mrs. Terrence H. Gray
Mr. and Mrs. William M. Gray
Mrs. Catherine W. Greene

Mr. and Mrs. Frederic E. Greenman
Mr. and Mrs. Charles S. Griffen
Ms. Frances R. Grindell
Mr. and Mrs. Frederick L. Grunewald
Mr. and Mrs. John W. Gussenhoven
Mr. Barry Gutrad
Mr. and Mrs. Martin Haase
Mr. Ralph V. Hagopian
Ms. Susan M. Halby
Mr. David Hales and
Ms. Barbara McLeod
Mrs. Madeline Hamersley
Mr. and Mrs. Ricker Hamilton
Mr. Charles G. Hamlin
Mr. Morris Hancock and
Rev. Linda Peyton-Hancock
Hancock Point Chapel Society, ME
Hancock United Church of Christ,
Lexington, ME
Ms. Beverly Hannett-Price
Mr. and Mrs. Eldred H. Harmon
Mr. Loren B. Harmon
Harmon's
Mr. and Mrs. John H. Harper
Mr. and Mrs. Charles Harrington
Harrington Elementary School
Mr. and Mrs. Oliver James Hart
Mr. and Mrs. Thomas R. Haslett
Dr. and Mrs. Robert H. Hayes
Mr. Bruce Hazelton
Mr. and Mrs. Robert E. Healing
Mr. and Mrs. Adam Hedberg
Mr. and Mrs. Theodore E.
Heidenreich, Jr.
Ms. Alice E. Hendricks
Ms. Barbara F. Hepburn
Mr. and Mrs. Eric W. Hermansen
Ms. Caroline A. Herrick
Mr. and Mrs. William Hersey
Mr. and Mrs. Robert N. Hersom
Mr. and Mrs. Charles E. Hewett
Ms. Ellen D. Heye
Ms. Elizabeth Hicken
Mr. and Mrs. G. Albert Higgins, Jr.
Mr. and Mrs. Robert L. Hinckley
Ms. Margaret Hinman
Ms. Frances S. Hitchcock
Mr. and Mrs. Donald E. Hobbs
Mr. and Mrs. Thomas O. Hobbs
Dr. and Mrs. John P. Hoche
Ms. Nancy J. Hoeflich
Mr. and Mrs. Robert E. Holland
Dr. and Mrs. William S. Holt
Ms. Betsey Holtzmann
Mr. and Mrs. Stephen B. Homer
Mr. and Mrs. Michael M. Horn
Dr. and Mrs. William R. Horner
Mr. Philip C. Houbler
Mr. and Mrs. Richard K. Howe
Mr. and Mrs. Stephen D. Hoyt
Rev. Henry W. Huddleston, Jr.
Mr. and Mrs. William B. Huddleston
Ms. Elaine Huguen
Mr. and Mrs. Marshall B. Hughes
Mr. and Mrs. Hans Humes
Mr. and Mrs. James M. Hunter
Mr. and Mrs. Brent Hutchins
Mr. and Mrs. John C. Hutchins
Mrs. Angela M. Imhof
Mr. and Mrs. David B. Ingram
Ms. Elizabeth F. Ingram
Mr. and Mrs. Stephen M. Ingram

Islesford Congregational Church, ME
Ms. Isabel A. Jackson
Mr. and Mrs. William H. James
Jeff Dobbs Productions, Inc.
Mr. and Mrs. Robert M. Jeffers, Jr.
Mr. and Mrs. Almond E. Jellison
Mr. and Mrs. Allen S. Johnson
Mr. and Mrs. Michael Johnson
Rev. Mary and Mr. Robert L.
Johnstone, III
Mr. and Mrs. Douglas C. Jones
Mr. and Mrs. Leslie A. Jones
Mr. Andrew Jones and
Ms. Andrea D. Beesley
Mr. Dumont M. Jones and
Ms. Joan T. Muellerleile
Jonesboro Union Church, ME
Ms. Elizabeth R. Kast
Mrs. Jennifer Z. Kearne
Mr. Thomas E. Keller
Mr. and Mrs. Morris C. Kellett
Mr. and Mrs. James M. Kellogg
Mr. and Mrs. John H. Kellogg
Mr. and Mrs. John N. Kelly
Mr. and Mrs. Edmund H. Kendrick
Mrs. Joan W. Kennedy
Mr. Dewey Kerr, Jr.
Mr. and Mrs. Wilson H. Kimnach
Mr. and Mrs. Charles W. King
Ms. Evelyn L. King
Ms. Ellen W. Kingsbury
Mr. and Mrs. Jack G. Knebel
Ms. Wendy Knickerbocker
Mr. and Mrs. Van W. Knox, III
Mr. and Mrs. John L. Kohl
Ms. Anne M. Kozak
Mr. and Mrs. J. R. Krevans
Dr. and Mrs. Julius R. Krevans
Dr. and Mrs. Ernest F. Krug, III
Mr. and Mrs. Phillips L. Kuhl
Mr. and Mrs. Richard W. Kurtz
Mr. John C. Kyriakos
Ladies Benevolent Society of Wells
Dr. Barry M. Lamont
Miss Anna Lamontain
Dr. Carlisle P. Landel and
Mrs. Kathleen M. Lawler
Mr. and Mrs. John E. Lape
Mrs. Hope W. Lapsley
Ms. Nancy W. Larson
Law Offices of Doyle & Nelson
Law Offices Toothaker & Chong, Inc.
Leapfrog Innovations
Mr. and Mrs. Edward H. Leiter
Mr. and Mrs. Richard R. Lemoine
Mr. and Mrs. Joseph H. Letourneau
Ms. Rosalind W. Lewis
Mr. and Mrs. Scott C. Lewis
Mr. and Mrs. John A. Libby
Mr. Charles Libby and
Ms. Catherine E. Whitney
Mr. and Mrs. Gary H. Lin
Ms. Shirley Lindenbaum
Mr. and Mrs. Edward C. Lingel, II
Mr. and Mrs. James J. Linnane
Mr. and Mrs. Stephen B. Loring
Mr. and Mrs. Jeffrey Lovit
Mr. and Mrs. K. Prescott Low
Mrs. Lorraine S. Lowell
Mr. and Mrs. Ralph Lowell, Jr.
Mr. and Mrs. Gary T. MacDonald
Ms. Katherine MacDonald and

Ms. Judith McMoran
Mr. and Mrs. James C. MacLeod
Mrs. E. Barbara MacQuinn
Maine Coast Memorial Hospital
Mr. and Mrs. Mark A. Malone
Mr. William Mank and
Mrs. Chris Parsons-Mank
Mr. Jim Maren
Ms. Michelle Marks
Mr. and Mrs. James W. Marshall, Jr.
Mr. and Mrs. Thomas G. Marshall
Mr. and Mrs. Robert A. Martin
Mr. and Mrs. Leoy L. Martinson
Ms. Marilyn M. Mays
Dr. and Mrs. S. Allan McAllister
Mr. and Mrs. J. Peter McCracken
Mr. and Mrs. Joseph L. McEntee
Mrs. Lynne P. McGinn
Mr. Maurice J. McIsaac and
Ms. Trisha L. Rhodes
Mr. and Mrs. Tony C. McKim
Mr. and Mrs. Brockway McMillan
Mr. and Mrs. Mitchell T. McMillen
Ms. Elizabeth McMullan and
Mr. Kaveh Hagkherder
McNeil Foundation
Mr. and Mrs. Creighton McShane
Mr. and Mrs. Denis B. McWhan
MDI Alcohol & Drug Abuse Group
MDI YMCA
Dr. and Mrs. William C. Meade
Mr. and Mrs. Terence Meehan
Mr. and Mrs. Steen Meryweather
Mrs. Jean P. Messer
Mrs. Eleanor F. Metcalf
Mr. and Mrs. Charles A. Meyer
Ms. Florence R. Meyer
Mr. and Mrs. Fred J. Meyer
Mr. and Mrs. Frederick Meyer
Mr. and Mrs. Helmut Meyerbach
Mr. and Mrs. William P. Meyerjack, Jr.
Milbridge Congregational
Church Women, ME
Mr. and Mrs. Joseph W. Miley, Jr.
Mr. and Mrs. Gerard M. Miller, Jr.
Mr. and Mrs. George C. Mitchell
Monhegan Community Church, ME
Mr. Carl C. Monk
Dr. and Dr. Jeffrey P. Moore
Morris Yachts, Inc.
Mr. Samuel G. Morrison
Mrs. Esther M. Mun
Mr. and Mrs. Christopher F. Murphy
Mr. and Mrs. Stephen B. Mygatt
Dr. Aurobinod A. Nair
Narraguagus High School
Mrs. Janneke S. Neilson
Mr. and Mrs. N. Travers Nelson
Mr. and Mrs. Norman F. Nelson
Mrs. Joan V. Netland
New Hampshire Conference UCC
Mr. and Mrs. Peter Newell
Mr. and Mrs. Jarvis W. Newman
Noel Builders, Inc.
North Bucksport U.M.C.
Women's Club, ME
Ms. Sylvia G. Norton
Mr. and Mrs. Peter K. Nye
Mr. and Mrs. John A. Oldham, II
Ms. Tonda L. Olson
Mr. and Mrs. Davy W. Opdyke
Open Door Recovery Center

Ms. Anne Pell Osborn
Mr. William Osborn
Mr. and Mrs. Harold H. Owen, Jr.
Ms. Suzanne Owen
Ms. Constance Packard
Ms. Susan C. Page
Mrs. Margaret L. Paine
Mr. Richard Palazola and
Ms. Jane Monahan
Ms. Anne E. Peaston
Mr. Billups P. Percy
Mr. and Mrs. James W. Perkins
Mr. and Mrs. H. Bradlee Perry
Mr. and Mrs. John R. Perry
Ms. Mary Esther Perry
Mr. and Mrs. Stanley R. Peterson
Ms. Ona R. Pettibon
Mrs. Sarah A. Phillips
Mr. Richard Phippen
Mr. and Mrs. Frank E. Pickering
Mr. and Mrs. John Jay Pierrepoint
Dr. and Mrs. Richard N. Pierson, Jr.
Ms. Margaret S. Pomeroy
Mr. and Mrs. Arthur G. Powell
Ms. Theresa Anne Powers
Ms. Carole Sue Prescott
Princeton Congregational Church, ME
Mr. and Mrs. William R. Proctor
Mr. Peter D. Prudden
Mr. and Mrs. Jacob E. Rabatin
Dr. and Mrs. Raymond N. Rappaport
Mr. and Mrs. John J. Rauch
Ms. Mary C. Rea
Mr. and Mrs. Dean S. Read
Mr. and Mrs. Philip W. Read
Mr. and Mrs. George Reath, Jr.
Mr. Earl Redman
Mr. and Mrs. Dana J. Reed
Ms. Judy Reemtsma
Mr. and Mrs. James N. Rees
Mr. and Mrs. John P. Reeves
Mr. and Mrs. Scott R. Renius
Mr. and Mrs. J. Theodore Repa
Ms. Linda Restivo
Rings Paving Company, INC.
Ms. Lee Tyler Robbins
Mr. Mervin F. Roberts
Rockland Marine Corporation
Mr. Neil R. Rolde
Mr. and Mrs. Derry Roopenian
Ms. Sharon L. Rosen
Ms. Barbara Royal
Ms. Barbara M. Rudolph
Mr. and Mrs. Peter S. Rudolph
Rumery's Car Care
Mr. and Mrs. Henry S. Russell
Ms. Justine V. R. Russell
S.A.R.A. Committee of
Capitol Island, ME
Dr. and Mrs. Eckart Sachsse
Ms. Jo D. Saffier and
Ms. Kristian R. Carr
Saint Brendan the Navigator
Episcopal Church
Mr. and Mrs. Edward L. Samek
Mr. William L. Saunders, Jr.
Mr. and Mrs. Alden H. Sawyer, Jr.
Mr. and Mrs. John V. Sawyer, II
Sawyer Memorial Congregational
Church, ME
Mr. Andrew L. Schieffelin
Mrs. Mary W. Schley

Mr. Karl R. Schoettler, Jr.
 Ms. Evelyn C. Schwager
 Mr. and Mrs. Brian G. Scoles
 Mr. and Mrs. Jack W. Scott
 Mr. and Mrs. R. MacDonald Scott
 Ms. Valerie E. Scott
 Mr. and Mrs. David C. Sears
 Mr. and Mrs. Frederick D. Seaton
 Second Congregational Church
 UCC, Newcastle, ME
 Ms. Carolyn Seletzky
 Mr. and Mrs. Peter H. Sellers
 Dr. and Mrs. John C. Serrage
 Mr. and Mrs. Maurice P. Shea, III
 Ms. Katharine Sheaff
 Ms. Kathleen S. Sheehan
 Mr. and Mrs. Steven Shelton
 Mr. G. Dudley Shepard
 Ms. Barbara S. Shirey
 Ms. Andrea G. Shirley
 Mr. James Shortell and
 Ms. Michelle R. Sprague
 Dr. and Mrs. Dennis L. Shubert
 Mr. and Mrs. Richard S. Sidell
 Sigma Kappa Alumnae
 S. Suburban Chicago, IL
 Sigma Kappa Auburn U. Theta XI
 Mr. Herbert T. Silsby, II
 Ms. Carol L. Simpson
 Mr. and Mrs. Seth Singleton
 Mr. Glenn E. Siple and
 Mrs. Linda J. Thomson
 Mr. and Mrs. Eric T. Slosser
 Mr. and Mrs. Donald A. Small
 Mr. and Mrs. Arthur W. Smith
 Mr. Dennis L. Smith
 Mr. Frank W. Smith
 Ms. Harriet F. Smith
 Mr. and Mrs. John C. Smith
 Mr. and Mrs. Kenneth Smith
 Mrs. Rhoda Smith
 Mr. and Mrs. Thomas A. Smith
 Mr. Dennis L. Smith and
 Ms. Karen O. Zimmermann
 Mr. Eliot K. Smith and
 Ms. Anne P. Longley
 Mr. Stephen A. Smith and
 Ms. Martha J. Freimuth
 Dr. Samuel P. Solish
 Soyatech
 Mrs. June B. Spencer
 Mr. and Mrs. Daniel J. Sposito
 Mr. and Mrs. Stephen H. Sprague
 Square & Compass Club, Inc.
 St. Ansgar Evangelical Lutheran
 Church, Portland, ME
 St. Luke's Parish, Darien, CT
 Mr. and Mrs. C. William Stamm
 Mr. and Mrs. Thomas E. Stammen
 Mr. Lee P. Steele
 Mr. and Mrs. Sheridan Steele
 Dr. Scott M. Steidl and
 Mrs. Mary Elizabeth Duncan
 Dr. and Mrs. T. Douglas Stenberg
 Dr. and Mrs. Jordan E. Sterrer
 Ms. Sandra A. Stevens
 Mr. Robert E. Stevens and
 Ms. Kathleen E. Sullivan
 Mrs. Averie E. Stinson
 Ms. Elizabeth A. Straus
 Dr. and Mrs. Elliot W. Strong
 Rev. Dr. Nadine L. Strout

Mr. David G. Struck and
 Ms. Lavon L. Bartel
 Mr. and Mrs. Brewster Sturtevant
 Ms. Barbara Sullivan
 Mr. Tobias W. Suttle
 Mr. and Mrs. Owen M. Sutton
 Swan's Island Baptist Church, ME
 Mr. and Mrs. Eric Corbin Sweeney
 Ms. Carolyn L. Sweetser
 Mrs. Susan V. Swope
 Mr. and Mrs. Dudbridge T. Taylor
 Mr. and Mrs. Michele T. Testa, III
 Mr. and Mrs. Thomas J. Testa
 The Mason Bay Seaside Chapel,
 Jonesport, ME
 The Neighbors – First Baptist Church,
 Bangor, ME
 The Standard Baking Co.
 Third Congregational Church,
 Middletown, CT
 Mr. and Mrs. Charles C. Thomas
 Mr. and Mrs. William M. Thomas
 Mr. and Mrs. Billy L. Thompson
 Mr. and Mrs. David F. Thompson
 Mr. and Mrs. Ronald E.
 Thompson, Jr.
 Rev. Dr. Ansley C. Throckmorton
 Tom's Mini-Mart, Inc.
 Town of Sorrento
 Mr. and Mrs. Robert J. Tremblay
 Mr. Paul Trickett and
 Ms. Gloria Howard
 Mr. William C. Trimble, Jr.
 Mr. and Mrs. Winston M. Turner
 Mr. and Mrs. Mark G. Twombly
 Union Church, South Addison, ME
 Union Congregational Church,
 Wollaston, MA
 United Parish, Harrison and
 N. Bridgton, ME
 United Way of the National
 Capital Area
 Mr. and Mrs. Robert W. Upham, Jr.
 Mr. and Mrs. Peter C. Vacca
 Mr. and Mrs. Harold Van Sieten
 Ms. Fordyce E. Van Winkle
 Mr. and Mrs. Peter T. VanAken
 Ms. Beverly B. Vance
 Mr. Dirk Vandersloot and
 Ms. Jean Forest
 Mr. and Mrs. Samuel Vaughan
 Mr. Charles O. Verrill, Jr.
 Mr. Alfred A. Voskian, Jr.
 Ms. Mary Jane Waite
 Mr. and Mrs. R. Moseley Waite
 Dr. and Mrs. Hallam Walker
 Mr. and Mrs. George Wallis
 Mrs. Katharine S. Ward
 Mr. and Mrs. Peter M. Ward
 Washington Ladies Guild, ME
 Water of Life Lutheran Church
 Newcastle, ME
 Mr. and Mrs. W. Bell Watkins
 Dr. and Mrs. Thomas L. Watt
 Mr. Michael Weinberg and
 Ms. Jeanne Rotunda
 Ms. Susan C. Welch
 Mr. and Mrs. Bradford S. Wellman
 Mr. Peter R. Wells
 Mr. and Mrs. Peter A. Wentz
 Mr. and Mrs. Mark B. Werner
 Mr. and Mrs. D. Bradford Wetherell, Jr.

Mr. and Mrs. John P. Wetzel
 Mr. and Mrs. Robert D. Whalen, Jr.
 Mr. and Mrs. David A. Wheatland
 Mr. and Mrs. Jerry T. White
 Mrs. Elspeth Whitney
 Mr. and Mrs. Gregg S. Whitney
 Whitney Originals, Inc.
 Ms. Judith Whitney-Blake
 Rev. Dr. Michelle Wiley and
 Mr. David Arey
 Mr. Bernard L. Williams
 Mr. Ellsworth E. Williams
 Mr. and Mrs. Warren Williams
 Mr. John F. Winchester
 Dr. Frank L. Wiswall, Jr.
 Ms. Mary Ann Wockenfuss
 Woman's Union, First Baptist
 Church, Waterville, ME
 Women's Fellowship of Hammond St.,
 Bangor, ME
 Mr. and Mrs. David B. Woodside
 Mr. and Mrs. Eugene R. Woturski
 Mr. Thomas K. Yoder
 Mr. and Mrs. Christopher L. Young
 Doris Anne H. Younger
 Mr. and Mrs. Michael J. Zimmerman
 Mr. and Mrs. Robert H. Zinn
 Mr. James S. Zoller and
 Mr. John Smegal

Trusts and Bequests

Kathleen Andrews Bequest
 Carolyn E. Bowker Bequest
 George M. Butler Trust
 Louis S. Cleaves Trust
 Gertrude L. Eidman Bequest
 John C. Enk Charitable Trust
 Mary S. Enk Trust
 Frances Graves Perpetual Trust
 Catherine Alice Gunn Trust
 Eugene B. Hamilton Trust
 Marion B. Hamilton Trust
 Marjorie Hartman Bequest
 Alfred G. Jarvis Bequest
 Virginia B. Lloyd Bequest
 Matilda Markoe Trust
 Ray G. Marston Trust
 Edward B. Mears Trust
 Laura Nash Bequest
 Austin & Ruth Robinson Trust
 Irene R. Wells Bequest
 Wyman & Della Whitney Trust
 Constance H. Willis Bequest

Matching Gift Companies

Bank of America
 Benjamin Moore & Co.
 Cleveland H. Dodge Foundation
 GE Foundation
 General Re Co.
 ITW Foundation
 Pfizer Foundation
 Verizon Foundation

Gifts in Honor

Charles Adams
 Cornelia Greaves Bates
 Carl Brechlin
 Matthew and Meredith Brown
 Ashley Bryan
 Alison and David Butterworth
 Mr. and Mrs. James F. Caulk

Ruth and Tristram C. Colket, Jr.
 John and Judy Cooper
 Van W. Cox
 Bob and Mary Crabbs
 Ellen Curry
 Joanne Davis
 Patricia De Groot
 Rev. Gary A. DeLong
 Karen Dobbyn
 Rev. Dana Douglass
 F. Talbot Emery
 Mr. and Mrs. Byron R. Ferg
 Warren Fernald
 Patricia Fernandes
 Carl and Jennie Ganiel
 Jill and Sheldon Goldthwait
 Tim Gorman
 W.A. Grant
 Michael Harper
 Charlie Harrington
 Charlie and Wendy Harrington
 Ted Higgins
 Ted and Linda Hoskins
 Henry E. Hosley, III
 Ivan and Florence Hoyt
 Ann, David and Beth Ingram
 Francis J. Kunz
 Cathy Lewis
 Harvey Lowd
 Dave Macy
 Louise Gibson McGarvey
 Nan Miller
 Maine Sea Coast Mission Staff
 Esther Mun
 Mr. and Mrs. John R. Perry
 Jane Peterson
 Doug and Meredith Randolph-Foster
 Judy Reemtsma
 Ruth Rossi
 Levi Shaw
 Georgia Sheaff
 Lisa Shields
 George Shirey
 Agnes Smit
 Karl Smith
 Harold W. and June Smith
 JoAnn Spear-Brown
 Barbara and Sheridan Steele
 Fred, Chrissey and Cecile Stowell
 Philip Tays
 Joan Tilney
 Joan Tilney's children
 Laura Hinkley Towers
 Marjorie Twombly
 Linda Tyson
 Ron Watson
 Kathy Webner
 Margaret Wetzel
 Janice M. Whalen
 N. B. White

Gifts in Memory

Alan George Adams
 Kathleen Andrews
 Harry Appelon
 Adrian L. Ashman
 Paul and Margaret Austin
 Benjamin Beale
 Janet MacDonald Bennett
 Rev. Neal and Elizabeth Bousfield
 Weston Bousfield
 Carolyn E. Bowker

John Brace
 Mr. and Mrs. Alfred L. Bray
 Virginia Brooks
 Dorothy Alice Brouty
 Albert Bunker
 Linda Irene Butler
 John W. Campbell, Jr.
 Dr. Malcolm W. Cass
 Charlene Coffin
 John Conlow
 Maxwell Evarts Cox
 Dorothy and Merrill Dooley
 Olive K. Douglass
 Annie Cheves Farson
 Robert G. Fernald
 Fannie and Harold Finnimore
 Charles 'Pat' Foster
 Luther Freimuth
 Helen G.M. Galapha
 Edward S. Greaves
 Nickie Hanby
 Fredrika Heinemann
 Burb Reed Helmer
 Theodore and June Hsu
 Milton Hultman
 Alfred S. Kidwell
 Wallace Klausky
 Julia C. Knickerbocker
 Allen C. Knox
 Leila Lenagh
 Evelyn Osier Lindgren
 Helen D. Lunt
 Denise MacDonald
 James McElwein
 Gracie Melendy
 Mr. and Mrs. Henry S. Niemitz
 Diana Hammond O'Neill
 Sally Owen
 Margaret Morgan Pepper
 Linda and Polfrey Perkins
 Fred and Jessie Philbrook
 Milton and Dorothy Philbrook
 Mary E. Polesnak
 Prof. and Mrs. Edward Bliss Reed
 Sylvia B. Reeves
 Dorian F. Reid
 Emily Roberts
 George A. Rolleston
 Dwight E. Sargent
 Rev. Arthur H. Sargent
 William A. Schneider
 Paul and Betty Starkey
 Izora E. Stephens
 Elizabeth Slack Tibbets
 Janet B. Toman
 Marion Van Aken
 Roger C. Ward
 Molly White
 Ruth Stowell Whitney
 James Wight
 Gardner and Effie Willis
 Honorable Hollis Wyman

Gifts In-Kind

Mrs. Kelsey Abbott
 Acadia Corporation
 Acadia Outdoors
 Mr. Harry B. Adams
 Ms. Barbara Lunt Allen
 Rev. and Mrs. John W. Ames
 Ms. Ruth Appleyard
 Mr. Robert S. Bayley

Bangor Savings Bank
 Bar Harbor Wear
 Ms. Lydia M. Barnes
 Mr. Bob Barrett
 Bartlett Winery
 Mr. and Mrs. Bob Beallor
 Ben & Bill's Chocolate Emporium
 Mr. Edward Bennett
 Rev. and Mrs. Robert S. Benson
 Ms. Karen H. Berner
 Mr. and Mrs. Dana Berry
 Ms. Roberta Black
 Mr. and Mrs. Don Blair
 Mr. and Mrs. Richard M. Blaney
 Mr. and Mrs. Ernie Bouchard
 Mr. and Mrs. C. H. Breedlove
 Mr. and Mrs. Edward S. Bromage
 Ms. Betty Brown
 Dr. and Mrs. Mark Brown
 Mr. and Mrs. Dean Bryer
 Ms. Carol J. Bult
 Mr. and Mrs. Jack Cahill
 Mr. and Mrs. Roc R. Caivano
 Cappy's Chowder House
 Mr. and Mrs. John H. Carman
 Ms. Elizabeth Carter
 Ms. Lucinda Caugley
 Chebeague UMC
 Ms. Jillaine Chipman
 Christian Women's Fellowship
 Mr. Robert Clark
 Ms. Sarah M. Clemens
 Mr. and Mrs. James L. Clunan
 Mr. and Mrs. Tristram C. Colket, Jr.
 Ms. Elinor Coome
 Dr. Llewellyn W. Cooper
 Mr. and Mrs. Jon Corson-Rikert
 Mr. and Mrs. Donald Cousins
 Creative Framing
 The Rev. Canon Myrick Cross and
 Mrs. Amy A. Cross
 Ms. Sally A. Crowley
 Mr. and Mrs. Ed Dalch
 Mr. and Mrs. Frederick H. Darrow
 Ms. Angela Delvecchio
 Mr. and Mrs. John A. DeTurris
 Mrs. Dorothea M. Dodge
 Ms. Jennifer L. Donaldson
 Dover Church, MA
 Dover-Foxcroft Congregational
 Church, UCC, ME
 Mr. James Fahey and
 Mrs. Eileen McGlinchey Fahey
 Ms. Virginia H. Felch
 Ms. Genevieve Ferguson
 First Baptist Church, S. Berwick, ME
 First Congregational Church,
 N. Anson, ME
 First Congregational Church of S. Paris
 Mr. and Mrs. Frank Fletcher
 Mr. and Mrs. Christopher A. Fogg
 Ms. Jean Forney
 Dr. and Mrs. Richard R. Fox
 Mr. and Mrs. Robinson G. Fry
 Mr. and Mrs. Nicholas T. Genimatas
 Mr. and Mrs. Richard Griffin
 Mr. and Mrs. Richard Guttman
 Mr. and Mrs. Paul F. Haertel
 Mr. and Mrs. Robert B. Hale
 Hannaford - Portland
 Mr. and Mrs. John H. Harper
 Dr. Kathleen A. Harper

Mr. and Mrs. Raymond W. Harrison
 Mr. and Mrs. Michael E. Healy
 Ms. Brenda Heim
 Ms. Jane Hicks
 Dr. and Mrs. John P. Hoche
 Mr. and Mrs. Stephen B. Homer
 Ms. Lynn Jebbia
 Ms. Tina Jewett
 Ms. Lori Stratton Jones
 Mr. and Mrs. Robert A. Jones
 Mr. and Mrs. H. Lee Judd
 Just In Time Supply Company
 Mr. Raymond Kelley
 Ms. Gwendolyn L. Kelley
 Mr. John Kelly
 Mr. and Mrs. Peter Kelmenson
 Kimball Shop & Boutique
 Ms. Anne M. Kozak
 Dr. and Mrs. Julius R. Krevans
 Mr. and Mrs. J. R. Krevans
 Mr. and Mrs. John Kurgan
 Mr. Larry Labriola
 Mr. and Mrs. Philip B. Lape
 Ms. Nicole L. Leighton
 Lincoln First Congregational Church, ME
 Mr. and Mrs. John Linder
 Lovell United Church of Christ, ME
 Ms. Mary Lyman
 Machias Savings Bank
 Ms. Wendy Magner
 Maine-ly Greetings
 Mr. and Mrs. Robert E. Malaney
 Ms. Shauna Marshall
 Mr. and Mrs. Tom Martin
 Mr. and Mrs. John C. Maxwell, Jr.
 Ms. Reva J. Merrill
 Mrs. Eleanor F. Metcalf
 Ms. Marlene Miller
 Mr. and Mrs. Lon B. Miller
 Miller Gardens
 Missions Third Congregational Church
 Ms. Susan W. Mitchell
 Ms. and Mr. Donna Moore
 Mr. Joseph Narrow
 North Deering Congregational Church
 Mrs. Anne Odell
 Mr. and Mrs. Daniel W. Opdyke
 Ms. Ann M. Otto
 Mrs. Harriet Pendleton
 Mr. Robert Phipps
 Phippsburg Unity Circle
 Mr. and Mrs. Daniel P. Poteet, II
 Mr. and Mrs. Nathaniel S. Putnam
 Quarterdeck Restaurant
 Queen Anne's Flower Shop
 Mr. and Mrs. Dean S. Read
 Mr. and Mrs. Philip W. Read
 Mr. and Mrs. Dana J. Reed
 Mr. and Mrs. Stephen H. Richards
 Ms. Saida Riddell
 Mr. and Mrs. Dery Roopenian
 Ms. Kimberly Ross
 Mr. and Mrs. Nolan Rossi
 Mr. and Mrs. John Schafer
 Ms. Jill Schoof
 Mr. and Mrs. Ronald W. Scott
 Second Congregational Church
 UCC, Norway
 Ms. Ann Semonite
 Sherman's Book & Stationary Store
 Sigma Kappa Alumnae Central FL
 Sigma Kappa Alumnae Charlotte, NC



Story King, SUNBEAM V Engineer, hooking up telemedicine equipment. BILL KUYKENDALL

Sigma Kappa Alumnae Chicago, IL
 Sigma Kappa Alumnae Cincinnati, EK
 Sigma Kappa Alumnae Dallas, TX
 Sigma Kappa Alumnae
 Greater KS City, KS
 Sigma Kappa Alumnae, Lincoln, ME
 Sigma Kappa Alumnae NYC, NY
 Sigma Kappa Alumnae
 San Fernando Valley, CA
 Sigma Kappa Alumnae Tri-Cities, TN
 Sigma Kappa Alumnae
 W. Orange County, CA
 Sigma Kappa Appalachian State
 U Theta Alpha
 Sigma Kappa Babson College Zeta Zeta
 Sigma Kappa Ball State U. Gamma Eta
 Sigma Kappa Georgetown College
 Alpha Chi
 Sigma Kappa U of Central MO State
 Delta Eta
 Sigma Kappa U of E. MI Delta Alpha
 Sigma Kappa U of Elon Kappa Zeta
 Sigma Kappa U of IA State
 Alpha Epsilon
 Sigma Kappa U of MA Beta Eta
 Sigma Kappa U of MI State
 Delta Upsilon
 Sigma Kappa U of NC Gamma Phi
 Sigma Kappa U of Rutgers EK
 Sigma Kappa U of SE IN Zeta Alpha
 Sigma Kappa U of TN at Chattanooga
 Theta Phi
 Sigma Kappa U of Wesleyan IL Eta
 Sigma Kappa U of Wittenberg OH
 Gamma Omega
 Mr. Al Simons
 Sips
 Ms. Louise Smith
 Mr. and Mrs. Kenneth Smith

Mr. Dennis L. Smith and
 Ms. Karen O. Zimmermann
 Mr. and Mrs. Craig Snapp
 South Congregational Church,
 So. Glastonbury, CT
 Southwest Cycle Shop
 Ms. Janet Spitz
 Mr. Aaron Sprague
 St. Andrew & St. John Church,
 Southwest Harbor, ME
 St. Matthew's United Church of Christ,
 Carlisle, PA
 Mr. and Mrs. Sheridan Steele
 Subway - Bar Harbor
 Subway - Ellsworth
 Subway - Mt. Desert Island
 Mr. and Mrs. Martin Sullivan
 Sullivan Harbor Farm Smokehouse
 Ms. Catherine M. Sweeney
 Mr. Brian Taylor
 Taylor's Drug Store
 Mr. and Mrs. Norcross Teel, Jr.
 The Redbook
 Mr. and Mrs. Billy L. Thompson
 Ms. Tammy J. Thurlow
 Mr. Brian Timko and
 Ms. Leslie Barroso
 Mr. and Mrs. Frederic Towers
 Trinity Lutheran Church,
 Valparaiso, IN
 Mrs. Marjorie D. Twombly
 United Baptist Church, Madison, ME
 Mr. and Mrs. Ronald Varin
 Ms. Jen Wales
 Wallace Tent & Party Rental
 Mr. Richard Wammark
 Ms. Phyllis Ward
 Mr. and Mrs. Jon H. Webber
 Wells Congregational Church, ME

Ms. Gladys Werkley
 Mr. and Mrs. David B. Woodside
 Workman Publisher
 Rev. and Mrs. Stuart G. Wysham
 Mr. and Mrs. Charles R. Young
 Z Studio

*The Maine Sea Coast
 Mission appreciates the
 hundreds of additional
 donors with gifts under
 \$100. Unfortunately, space
 constraints do not allow us to
 include all names.*

*We apologize for any errors
 or omissions. If you notice a
 problem, please call Sarah
 Clemens at 207-288-5097,
 ext. 12, or email her at
 sclemens@seacoastmission.org.*

Board of Directors

H. Lee Judd, *President*
Joseph M. Murphy, *Vice President*
Henry L.P. Schmelzer, *Treasurer*
Chadbourn H. Smith, *Secretary/Clerk*
Charles B. Alexander
Cornelia Greaves Bates
Roger S. Clapp
Lester L. Coleman
Ruth M. Colket
Dennis S. Damon
William E. Eason, Jr.
Jill M. Goldthwait
Theodosia J. Gray
J. Clark Grew, II
Monika A. Heimbold
Nancy K. Ho
Phillip B. Lape
Tony C. McKim
Timothy P. Schieffelin
Linda B. Thompson
Ansley C. Throckmorton
Gavin H. Watson, Jr.

Honorary Directors

Alan L. Baker
Curtis L. Blake
Gordon I. Erikson
Christopher Hutchins
Frederick E. Hutchinson
Justine M. Morris
Chester E. Norris, Jr.
John E. Parker, Jr.
Patricia G. Scull
Lynda Z. Tyson
Douglas Williams

Staff

Colket Center, Bar Harbor

Rev. Gary A. DeLong, *Executive Director*
Anthony P. Hessert, *Director of Finance and Administration*
Stephen H. Richards, *Director of Development*
Sarah M. Clemens, *Development Associate*
Kathy Jaensch, *Assistant Financial Manager*
Nicole Leighton, *Receptionist*
Julie Patton, *Christmas Program Coordinator*
Terri Rodick, *Executive Assistant and Scholarship Coordinator*
Charles Weber, *Caretaker*
Marianne Barnicle, *Volunteer Archivist*

Downeast Campus, Cherryfield

Charles Harrington, *Director of EdGE*
Wendy Harrington, *Director of Service Programs*
Allison M. Ouellet, *EdGE Lead Site Coordinator*
Jordan Clark, *EdGE Site Coordinator*
Maria Hall, *EdGE Administrative Assistant*
Susie James, *EdGE Site Coordinator*
Mia White, *EdGE Site Coordinator*
Peter Witkop, *EdGE Site Coordinator*
Marilyn Nickson, *Community Coordinator*
Gena Norgaard, *Food Pantry Manager*
Scott Shaw, *Caretaker & Housing Repair Program Coordinator*
Les Stanwood, *Program Assistant*

Island Outreach

Rev. Robert Benson, *Pastor to the Outer Islands*
Sharon Daley, *Director Island Health Services*
Michael Johnson, *SUNBEAM V Captain*
Storey King, *SUNBEAM V Engineer*
Patricia Dutille, *SUNBEAM V Steward*
Rev. Ted Hoskins, *Minister to Coastal Communities and Fisheries*
Rev. Joseph Duncan, *Interim Minister,*
Second Baptist Church of Islesboro
Rev. Ken Dutille, *Minister, Swan's Island Baptist Church*
Rev. David Macy, *Minister, North Haven Baptist Church*
Rev. Joan Smith, *Interim Minister, Union Church of Vinalhaven*



Matinicus. JEFF DOBBS

Is helping people one of your missions in life?

There are many ways you can help the Maine Sea Coast Mission help children, families, and seniors in need.

BY MAIL Please make checks payable to *Maine Sea Coast Mission* and mail to the following address:

The Maine Sea Coast Mission
127 West Street
Bar Harbor, ME 04609

BY PHONE Please call 207-288-5097 or 1-888-824-7258. Visa, MasterCard, American Express, and Discover are accepted.

GIFTS OF STOCK Please call Steve Richards at 207-288-5097 for delivery instructions.

GIFT PLANNING OPPORTUNITIES Planned gifts prolong your support of the Mission's work, ensuring that ever increasing numbers of Maine's coastal and island residents will know the Mission as their partner in weathering life's challenges. Through planned giving, members and supporters of the Mission have the opportunity to reduce the taxable amount of their estates and to help secure the Mission's future at the same time.

THE MISSION AS BENEFICIARY Naming the Maine Sea Coast Mission as beneficiary of an IRA, life insurance policy or investment account is as easy as notifying your account or policy manager of your wishes. Some individuals establish life insurance policies with the intent of leaving the Mission a larger sum at the end of their lives than they would be able to contribute during their lifetime.

NAMING THE MISSION IN YOUR WILL Adding a sentence to your will instructing that a specified dollar amount or percentage of your residuary estate be given as a charitable contribution to the Maine Sea Coast Mission will result in a gift that will both reduce estate taxes and help the Mission to extend its future outreach. Real estate and investment securities also can be designated as gifts to the Mission through your will.

PLEASE VISIT THE SECTION OF OUR WEB SITE ON PLANNED GIVING WHICH PROVIDES USEFUL INFORMATION ON A WIDE VARIETY OF DIFFERENT PLANNED GIVING VEHICLES. This section of our web site also has the latest information on new types of planned gifts as well as articles on the benefits of different types of planned gifts. The Mission's web site is www.seacoastmission.org. When you reach the Mission's web site, just click on "What You Can Do" and then click on "Gift Planning" to find information about planned giving options which provide a wide range of benefits to you and to the Maine Sea Coast Mission.

EDITOR Stephen H. Richards

ASSOCIATE EDITOR Sarah M. Clemens

PHOTOGRAPHY Bill Kuykendall, Staff

DESIGN Z Studio

PRINT Snowman Printing & Presort Express



207.288.5097 | 127 West Street, Bar Harbor, Maine 04609 | www.seacoastmission.org

THE MAINE SEA COAST MISSION

"To make a difference we must move beyond words to actions."

GARY DELONG, *Executive Director*

Sunbeam Singer-Songwriters Tour musicians on Matinicus. PETER BANKSON

