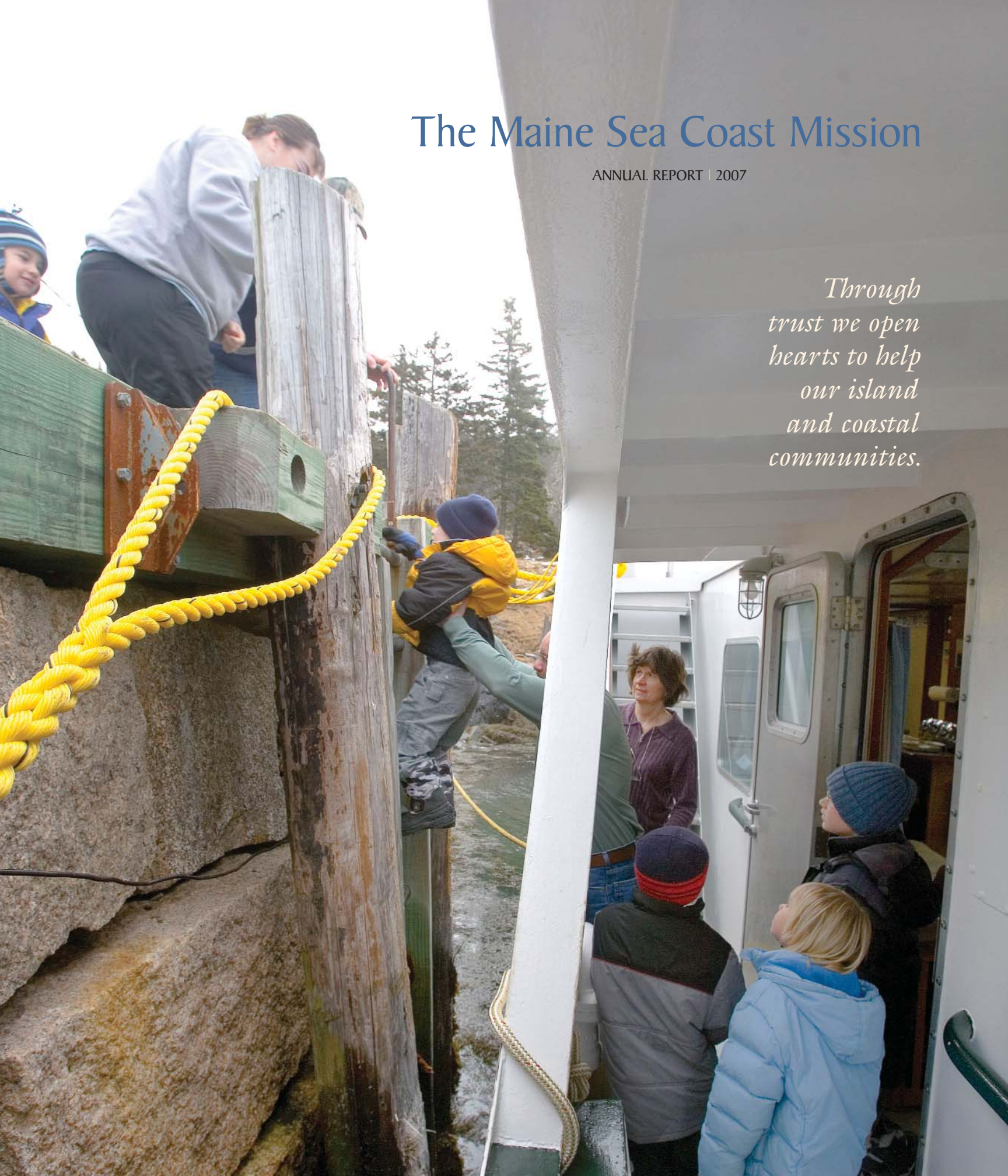


The Maine Sea Coast Mission

ANNUAL REPORT | 2007

*Through
trust we open
hearts to help
our island
and coastal
communities.*



Our Mission

The Maine Sea Coast Mission provides spiritual, health, and youth development programs in coastal and island communities from mid-coast to Downeast Maine. Rooted in a history of non-denominational service, the Mission offers hope, encouragement and help to strengthen individuals, families and communities.



BILL KUYKENDALL

“Faith is not belief without proof, but trust without reservation.”

D. ELTON TRUEBLOOD

Cover photo: Getting a hand to the deck of the Sunbeam V. BILL KUYKENDALL



Dear Friends,

Few things are more sacred in life than having others place their trust in you. When it occurs, the response is gratitude and determination to show that the confidence is well-placed.

The Mission is grateful and places a high value on the trust that we enjoy from those we serve and those who support our work with their time and resources.

Islanders let us know they trust us in a myriad of ways. They walk into the telehealth exam room on the *Sunbeam V* and share their health concerns with Nurse Sharon. It ranges from a wound that isn't healing to a depression that feels like a two-thousand pound mooring rock. Sharon is entrusted with those concerns, knowing that the care she offers or links them to will be caring and competent. Or they open their door to Pastor Rob or one of our Island Partner Church pastors, sometimes for tea and talk, other times for worship. Trust develops so that when they are on the mainland recovering from surgery or dealing with the death of a loved one, our pastors walk in and make a difference because they are accompanied by an accumulated trust.

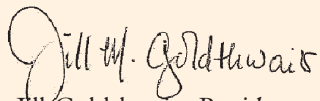
Parents trust us. They hand Charlie and our EdGE staff their children week in and week out including weeks at a time in the summer. On bikes and kayaks, running robots and computers, at sea on the *Sunbeam V* and on trips to Boston, Washington and Philadelphia, they entrust them to us. They expect us not only to keep them safe and help with their homework, but they trust that we will reinforce core values and attitudes that shape lifelong habits of character and self-esteem.

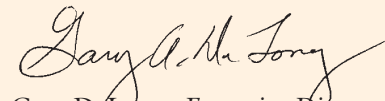
And our donors entrust their dollars to us because they know that they will be used faithfully and effectively in the delivery of services designed to make a difference, one life at a time.

A popular poster reads, "In the global village, distance no longer decides who is your neighbor." We would add that in a village, global or local, trust is the foundation upon which neighbors reach out to one another.

2007 was a year when the network of trust, granted us from those we serve, was woven larger and stronger and for that we are humble and grateful.

Sincerely,


Jill Goldthwait, *President*


Gary DeLong, *Executive Director*

I
MSCM
2007

The Maine Sea Coast Mission

ANNUAL REPORT | 2007

MESSAGE TO FRIENDS	I
OUTREACH TO ISLANDS	2
YOUTH DEVELOPMENT	10
MEETING IMMEDIATE NEEDS	14
STATEMENT OF FINANCIAL POSITION	18
DONORS	19
BOARD OF DIRECTORS AND STAFF	24
SUPPORTING THE MISSION	<i>Inside Back Cover</i>





Bill Clark of Isle au Haut with Nurse Sharon Daley. FREDFIELD.COM

Outreach to Islands

ISLAND HEALTH SERVICES

Sharon Daley, RN of the telemedicine program, traveled to the islands of Frenchboro, Swan's, Isle au Haut, and Matinicus on *Sunbeam V* twice a month, and connected via telemedicine to pediatricians, diabetic specialists, respiratory therapists, and primary care providers. Sharon facilitated screening clinics (cardiac, blood pressure, diabetes, prostate cancer, thyroid disease, cholesterol, blood sugar, skin cancer, etc.) and AA meetings, provided chronic care management in homes when individuals cannot travel to the dock, and organized health services such as preschool screening. In addition, Sharon served as the nurse for the island schools of Matinicus and Frenchboro. She provided health education, vision and hearing screenings, maintained immunization and health records, and was a resource to teachers.

Behavioral health service has grown. In the last year, many children and adults were seen by psychiatrists and counselors via telemedicine on the *Sunbeam V*. Dr. Deb Loftus, child psychologist at MDI Hospital, showed the connection between mind and body when

she went to Frenchboro on the *Sunbeam V* and gave a talk on parenting. She encouraged connections, getting parents talking, exchanging ideas, and supporting one another.

Frenchboro residents had difficulty purchasing groceries because the Frenchboro ferry leaves on Wednesday and returns on Thursday. This was expensive and difficult for some people such as teachers who cannot leave work for two days each week. Sharon saw a need for this service and arranged for food to be delivered to Frenchboro with assistance from Shaw's Grocery Store and Island Connections. Residents now fax their orders into Shaw's and Island Connections, an MDI non-profit, picks up the food and delivers it to the island.

This year, two nurses from the VA Hospital traveled on the *Sunbeam V* to meet with veterans on Frenchboro and Swan's Island. They listened to the veterans' concerns about traveling from the island to the VA hospital in Togus for medical treatment and their desire to use telemedicine as an alternative.

2

MSCM
2007

On November 4, 2007, island residents from nine islands responded to the Mission's invitation and gathered at the University of Maine's Hutchinson Center in Belfast to discuss an island health initiative. They discussed the need for more trained Emergency Medical Technicians on the islands. This training is difficult because it requires off-island training or a trainer to come to the island. They also discussed primary care, behavioral health, home health care, and the idea of having land-based telemedicine units on the islands in order to provide better access to healthcare.

The Mill Pond Health Clinic on Swan's Island opened its doors to the island population on November 15, 2007. Last year the Town of Swan's Island approved the use of \$200,000 of town funds for the renovation of a building for use as a health clinic. The Maine Sea Coast Mission matched donations from islanders with \$27,000 for a total of \$54,000 for necessary furnishings and medical equipment, which included an updated telemedicine unit. The clinic will use telemedicine technology to connect island patients to land-based clinics and hospitals so they can receive specialized medical diagnosis and treatment. Nurse Daley will continue to make visits to Swan's Island on a biweekly basis, but will now be seeing patients at the Mill Pond Health Clinic, rather than on the *Sunbeam V*. The clinic allows more services to be offered to islanders and

provides easier access, particularly for those who found getting on and off the *Sunbeam V* challenging.

This year the telemedicine program was featured in the August 2007 *Bangor Metro* magazine in an article entitled, "Health Care That Floats" and in the November 2007, *Health Management Technology* magazine in an article entitled, "Riding the Technological Wave."

Late one evening, a person came to the *Sunbeam V*, sad and hurting. The person said, "I was driving around and needed to talk and knew it would be o.k. to come here." The core of what we do on the *Sunbeam V* is about connections. Connections are often expressed in small, subtle ways. But when the time is taken to acknowledge them fully, the real scope of the work we do is seen. We form lasting relationships with communities that enrich both their lives, and ours.

MINISTRIES TO ISLANDS

Outer Islands Ministry

The *Sunbeam V* again served as an able vessel to nurture hope and bolster community spirits through gatherings of enthusiastic students, an inter-island softball tournament, sacred times in the island communities, and workshops with engaging artists and musicians.

Telemedicine unit on Sunbeam V is used to examine Frenchboro child.





Conversations about fishing regulations and the scarcity of both bait and lobsters arose...

An important role for the Pastor to the Outer Islands is to convene gatherings of islanders young and old. The year began with the third annual retreat for island middle schoolers, in 2007. Fourteen students from six islands trekked to the University of Maine where they explored the opportunities and challenges of the transition to off-island high school. During this trip, they made new friends, volunteered at the Ronald MacDonald house, and climbed the rock wall at MaineBound. For adults, a summertime inter-island softball tournament between Islesford, Great Cranberry, Frenchboro, and Isle au Haut produced three memorable afternoons and many closely fought contests. Frenchboro emerged as the newly-crowned champion, besting Great Cranberry 3-2 and powerhouse Islesford 18-7. Along the way, conversations about fishing regulations and the scarcity of both bait and lobsters arose among fishermen-turned-softball players, and fans took turns swatting mosquitoes and flipping burgers while basking in the delightful summer sun.

Another role of the pastor is to offer opportunities for island communities to act in concert, perhaps in unusual ways, outside the traditional roles many inhabit. This year, the Sheep Island Rovers again offered their enthusiastic and joyful energy to contra dances on Frenchboro and Isle au Haut. Malen Hsu offered her considerable musical gifts as organist/pianist for the *Sunbeam V*'s Easter trip. The Frogtown Mountain Puppeteers drew a huge Frenchboro crowd for their

performance of "Everybody Loves Pirates," a hilarious tale of Lobster Boys heroic efforts. The Blue Hill high school steelband, Planet Pan, offered a community workshop and concert on Matinicus, drawing a dozen residents who learned to play the steel drums and who later played for more than 40 neighbors in a community concert on the wharf. Two things lighten the spirits and solidify the ground of community during mud season: new ways of relating to one's neighbors, and the simple gift of joy.

Traditionally the Pastor to the Outer Islands has been involved with the acknowledged centers of each island community—the one-room schoolhouse. Rev. Benson was honored to speak at the Monhegan graduation ceremony recognizing two island students bound for high school, and the *Sunbeam V* again served as the host site for the second annual island teachers retreat in August. The *Sunbeam V* also brought students from Monhegan, Matinicus, and Isle au Haut to the inter-island event on Frenchboro, where nearly 50 students (K-8, from five islands) gathered for two days of activities and fun.

Cristy Benson offered a basket-making class and Christmas ornament weaving workshop on Isle au Haut, and Rev. Benson performed a wedding on Matinicus on a glorious day in October. The next day, Rev. Benson officiated at the fourth annual Blessing of the Pets service on Monhegan.

4
MSCM
2007

BILL KUYKENDALL





Island students attending Inter-Island event on Frenchboro. ROB BENSON

This year, the *Sunbeam V* served the island residents by providing exciting new programs, partnerships, and opportunities to connect with a wider circle of island residents.

Island Partner Churches

The Mission maintains a special partnership with four island churches on Swan's, Islesboro, North Haven, and Vinalhaven. Providing financial and logistical support, this enables the congregation to have a full-time pastor whose parish is the entire island.

North Haven Baptist Church

Pastor Dave Macy and the members of the North Haven Baptist Church had a unique year in 2007. They learned what they meant to each other by being apart for several months of the year while Rev. Macy took an extended sabbatical made possible by a Lily Endowment Grant which was applied for jointly by the pastor and the congregation. Dr. Robert Bach, an island resident, retired physician and second career divinity student, filled in during the sabbatical. Dr. Bach's ministry during that time was greatly appreciated.

Lay leaders and pastors report that small numbers are always a worry and threat. They make it difficult to pay the bills and the burden of carrying out programs often falls repeatedly to the few. However, this small but determined congregation makes an impact.

The church had previously completed a Mission Outreach Planning Process that was led by Maine Sea Coast Mission staff. A recently formed island outreach

effort called North Haven Cares came to the church to see if the church would embrace this home health care outreach effort. Designed to assist both the elderly and their caregivers, the program was seeking a stable home base and it seemed to be a good fit to form a collaborative partnership with the church. Many of the goals of this well thought-out effort matched the intended outcomes of the planning process.

Rev. Macy continues to fulfill the role of pastor to the congregation and missionary to the whole island as called for in the Mission's Partner Church program.

Second Baptist Church in Islesboro

Saying farewell to a pastor is always difficult for a congregation. Having to say goodbye to Pastor James Weathersby at the time of his resignation in October of 2007 was difficult for everyone. Pastor James and wife Valerie made a lasting impression on the congregation and across the island as he was part of many island-wide efforts, affiliations and relationships during his three year ministry.

Early in December 2007, a decision was made to search for an interim pastor who will serve for approximately one year while the congregation plans for the next settled pastor.

In spite of Pastor James departure near the end of the year, a look back over 2007 sees a small, but active, congregation making Gods love tangible in everyday moments of caring.

These include weekly Sunday School classes and Summer Vacation Bible School open to all island



Frogtown Mountain Puppeteer, Brian Torbeck, entertains Frenchboro children.

children. The normal rounds of fundraisers and community builders took place on schedule. Among them were: kitchen table bible study, strawberry festival, rummage sale, combined services with the summer Episcopal congregation, Red Cross blood drive, Christmas eve dinner and service, mission luncheons each Wednesday open to all, an all church yard sale, and a concert presented by the band “Soul View.” Together all made for a wonderful year of increasing neighbor to neighbor caring and community.

Worship is central to the life of Second Baptist with a special commitment to leading the summer sunset services at Grindle Point. In addition to regular Sunday worship, there is a special emphasis made on Mother’s Day, Palm Sunday, Easter Sunrise service at the Narrows, Easter Sunday, and Children’s Day.

Swan’s Island Baptist Church

Rev. Ken Dutille, Minister at the Swan’s Island Baptist Church, found that collaboration was this year’s theme.

Rev. Dutille, worked with the Maine Sea Coast Mission’s Housing Repair Ministry and church members to repair the Swan’s Island Baptist Church. The ministry arranged for volunteers from two churches in Pennsylvania to work on the church. The volunteers ranged from 17 to 75 years old. First, they painted two sides of the church. Next, they refinished the annex

floor. The floor, which provides space for the church’s summer dinners, needed to be refinished. Because the summer dinners have been so successful, the finish on the floor was completely gone. Now the floor looks beautiful with five coats of varnish. The church provided a ham dinner to the group on the first night, and on the final night a lobster bake was given to show appreciation for all their labor. It wasn’t all work and no play. The group had opportunities to visit the quarry and Fine Sand Beach on Swan’s Island.

Later that year, the Advent Christian Church summer minister left for the winter to his Pennsylvania home. A joint effort between the two island churches evolved. Meetings were held with Dr. Max Creswell (Advent summer minister), Rev. Gary Delong, Rev. Ken Dutille, and both congregations. A Memorandum of Understanding was developed and signed. To help save fuel costs, the congregations voted to have Rev. Dutille hold services the first and third Sundays at the Baptist Church and the second and fourth Sundays at the Advent Church. A theme was developed– “Two Churches: Loving God and Loving Community.” Now, with a renewed interest in cooperative island church life, attendance has increased.

Union Church of Vinalhaven

Island churches are both strong and fragile. The finances are always on the margin, but it never seems to lessen the

impact these congregations have in their communities. Much of the impact comes via the tireless outreach of the Partner Church pastors who, by virtue of their calling and their job description, provide care and nurture to their congregations with an eye out for where they can minister to anyone at any time, island-wide.

Pastor Michelle Wiley-Arey, while working only part-time in 2007, reached out with special gifts to impact those in financial distress and those who were grieving or lonely. Pastor Wiley brings a special expertise to helping people connect to available social service resources whether for battered women or fuel assistance or any of the multiple needs people may have. She assists those of her own flock and way beyond, following up with assistance with paperwork, forms and navigating all the barriers that go with modern social and medical services.

During 2007 the Union Church averaged fifty-two people in winter worship and seventy-eight in summer. As a major community resource, the church also serves as a place for meetings, as community concert hall, and a place for fundraisers to support local causes and organizations.

A significant 2007 achievement of the congregation was the completion of the parsonage renovation.

Minister to Coastal Communities and Fisheries


Ted Hoskins continues to serve on the Boards of Trustees/Directors of a number of community-based resource management organizations including: Penobscot East Resource Center in Stonington, Cobscook Bay Resource Center in Eastport, Northwest Atlantic Marine Alliance in Saco, and Saltwater Network based in Digby, Nova Scotia. Being the only person with ties to all these fishery groups, he plays a communications role that helps everyone stay tuned to common concerns and wider issues. As a member of Maine's Department of Marine Resources Lobster Advisory Council this role is even further enhanced.

Ted is frequently called upon to facilitate meetings. In 2007, he facilitated the Collaborative Lobster Enhancement Evaluation Workshop in Stonington and the Canadian American Lobster Town Meeting in New Brunswick. At the Maine Fishermen's Forum in Rockport, he also facilitated several of the workshops.

Coastal fishing communities east of the Penobscot River need to diversify their fishing opportunities. The Downeast Initiative, co-chaired by Ted, seeks to establish new management options for the New England Fishery Management Council while working

Matinicus Island residents join the Planet Pan Steel Band after island workshop. MIKKI AMES





toward conserving and protecting groundfish stocks as well as providing access on a sustainable basis to communities in the Downeast area. The Downeast Initiative has proposed a pilot project to demonstrate the viability of community based resource management. A training program for fishermen in small coastal communities was developed to provide the skills needed to initiate local alliances to more effectively participate in the management and legislative processes that determine fishing issues. The Community Fisheries Action Roundtable will hold its first sessions in January, February and March of 2008. Representatives from five

Downeast communities committed to participate in the three two-day sessions.

This year Ted was chosen for a Mid-East Fellowship with the Quebec Labrador Foundation with the overall theme: “Developing Approaches to Preventing and Mitigating Community Conflict.” He visited Egypt, Jordan, Palestine, and Israel and will be returning several times before the fellowship is over. His case study, presented on several occasions, dealt with the Downeast Initiative. A book will be published in 2009 detailing the project’s work.

A training program for fishermen in small coastal communities was developed to provide needed skills.

BILL KUYKENDALL



8
MSCM
2007



Dave and Betty Allen.

Sunbeam V Captain and Steward Retire

Sixty-five years of service to an organization sounds almost impossible in this day and age, but not if you look at the record of a couple who gave that number of years between them on the *Sunbeam V*. Dave Allen, the captain, was with the Mission since 1971. Betty Allen, the ship's steward, ran the *Sunbeam V*'s galley since they got married in 1978.

Dave and Betty made their last trip in February's blustery weather. After they retired, their contributions have become more apparent as many island residents remain in touch with them directly, and others come aboard the *Sunbeam V* simply to inquire about their whereabouts and well-being. They are still very much a part of the *Sunbeam V*. Their pictures hang in the galley, and the crew who served with them share stories of Dave's ability to dock the boat in challenging conditions while chatting on the phone, as well as Betty's gravity-defying oven modifications that kept the meals coming in rough weather.

Dave's blend of old-fashioned seamanship and adoption of modern technology has earned him a reputation that any captain would wish to emulate. From Frenchboro to Monhegan and many ports in between, twelve months a year including cold and icy winter months, the *Sunbeam V*, with Captain Allen at the helm, made thousands of trips in all kinds of weather. Winter winds and icy winter seas demand a level of respect that is different. It is one thing to steer a boat home on a clear day in a light breeze. However, safely piloting a boat back from Matinicus long after dark and in thick fog requires a superior level of seamanship not easily acquired. Dave Allen has brought the *Sunbeam V* home in those conditions time after time.

And getting there and back is just part of it. The four-person crew, their guests and all who come aboard were treated over the years to generous and delicious cuisine and desserts, especially warm freshly filled cream puffs. Betty was also famous for her all island dinners where the main cabin would be crowded with people filling bowl after bowl with one of her classic stews. In addition, she was much loved and appreciated for her charm and many enjoyable art classes.

Dave and Betty were feted at a farewell celebration at the Maine Sea Coast Mission headquarters on March 9, 2007. Senator Dennis Damon presented them with a proclamation from Gov. Baldacci thanking them for their many years of service and declaring March 9, 2007, to be Dave and Betty Allen Day. Senator Damon also presented them with a sentiment of the legislature expressing gratitude for their years of service. Jill Goldthwait, President of the Board, and Gary DeLong, Executive Director, also presented the Allens with a beautiful rendering of the *Sunbeam V*, carved out of basalt by Mark Harrington of Franklin, Maine.

Youth Development

EdGE—AFTER SCHOOL AND SUMMER PROGRAMS FOR YOUTH

In 2007, the EdGE Program celebrated its fifth anniversary. In the five years since the Maine Sea Coast Mission launched the program, the EdGE has reached out to children in rural Washington County by building quality programming, providing enrichment opportunities, and supporting life-long learning.

At this important milestone, the EdGE can look back over its five-year history and reflect on the changes within the program and on the strengths that have remained constant. When the EdGE first began, 30 students at two schools participated in activities with a supervisor. In 2007, 312 students at the new EdGE building and in six schools participated in individualized programs with twelve staff.

The EdGE has continued to build partnerships with other organizations. Some of these collaborations offer valuable hands-on learning opportunities for students. These included the FIRST Lego League and a film-making course funded by the Maine Arts Commission through a Company of Girls. EdGE-bots, a competitive team of Lego robotics engineers in grades 4-8, competed at the FIRST Lego Leagues state competition. Student filmmakers in middle school and high school

had a chance to write, direct, and edit their own independent films with help from professional filmmaker Martha Almy. Two students from this group were chosen to show their work at a student film festival in Portland, Maine.

Another important partnership involved 4-H and the Washington County Cooperative Extension. They teamed up with the EdGE to offer a Lego Robotics Expo that was open to all schools in Washington County. Additionally, 4-H volunteers offered two service learning clubs at the EdGE – Kids on the Grow and the Pink Club. Members of Kids on the Grow learned about early childhood education and volunteered at a local preschool. The Pink Club, based at the Ella Lewis School in Steuben, gave students the opportunity to identify and problem solve a need within their community. In an effort to increase community wellness and physical fitness, the group applied for and received a Youth in Action Grant from Cumberland Farms for \$1,400 which they used, along with volunteer support, to make improvements to the schools existing walking track.

The EdGE continued its collaborative work with MSAD 37 and Union 96. The Ella Lewis School in Union 96 piloted a backpack program with the EdGE and the Good Shepherd Food Bank. To help end child

10
MSCM
2007

EdGE students kayaking alongside the Sunbeam V.





EdGE students at summer camp.

2006-2007 EdGE Facts

- Over 50% of students attended regularly which is twice the national average
- 79% of parents of regular attendees attended one or more family event
- Over 2,480 volunteer hours were donated to the EdGE
- 80% of the students were eligible for free or reduced lunch
- 85% of all students retained or improved their math and language arts grades
- 96% of students who formerly had poor class attendance attended more frequently
- 87% of students who once had a hard time getting along with others showed improvement
- 96% of students who used to turn in homework late were getting homework in on time

hunger, students identified by the school principal received backpacks, with enough food each Friday to last them throughout the weekend.

In MSAD 37, Narraguagus High School partnered with the EdGE to create a mentoring program. A school staff committee, including the guidance counselor and principal, selected students to take part in the program. The program's goal was to help ease the transition into high school and increase graduation rates. Eighteen incoming freshmen were paired with upper classmen and met once a week for teambuilding and goal setting activities.

Also, within MSAD 37, the D.W. Merritt School and the EdGE have joined with the Department of Education to pilot *Creating Fair, Safe, and Responsive Schools*, an anti-bullying program. The EdGE was one of four programs selected state-wide to pilot this program. EdGE and D.W. Merritt team members worked with all students in grades six through eight twice a month.

The EdGE constantly works to expand a child's view of the world. In April, high school students who worked with the EdGE for 40 hours in 2006-2007 visited Washington D.C. Memorable stops included a

visit with Maine Senator Susan Collins at the Capitol, a luncheon with White House Fellows, a visit to Arlington Cemetery, and a tour of Mount Vernon.

Two EdGE students, Carolyn Rittenhouse and Jodi Burgess, were among the first pioneer EdGE participants and were involved in the very first EdGE summer camps. In high school they were strong members of the EdGE team and helped engage younger students in activities. In 2007, they both received scholarships through the Maine Sea Coast Mission.

Based on her five years with the EdGE, Carolyn Rittenhouse writes the following:

Because of the EdGE Program, I was able to develop necessary social and leadership skills. As I pursue a degree in Elementary Education at the University of Maine Farmington, I understand the importance of allowing children and teenagers to discover who they are and the need to challenge them to reach their goals in a safe and supportive environment. The EdGE provided me with the role models, opportunities, and activities that would have otherwise been unavailable to me. I entered the program in junior high as a shy and unsure girl, with an unstable

“The EdGE provided me with the role models, opportunities, and activities that would have otherwise been unavailable to me.” CAROLYN RITTENHOUSE

future. I left confident, active, goal-oriented, and able to step towards a life I had never known I could have before. As a former EdGE participant, staff member, and current EdGE Scholarship recipient, my gratitude to this program and the people who help make it possible is beyond that which I could ever express through words. My hope is that for years to come others might have the same life-defining experiences through the EdGE Program.

SCHOLARSHIPS FOR DOWNEAST STUDENTS

In 2007, the Maine Sea Coast Mission awarded \$92,000 in scholarships to 93 students. The scholarships ranged from \$500 to \$1,000. The Mission also offers a renewable EdGE scholarship of \$2,000 presented to an EdGE student who has successfully completed the EdGE program. Carolyn Rittenhouse of Cherryfield was the first recipient. All together, 42 Washington County, 46 Hancock County, and five Knox-Waldo County students received scholarships and 72 chose to attend a college or university located in Maine.

The second annual Scholarship Picnic was held in July. It was well attended by more than 50 students and their parents. The participants had a great time getting to know each other. They discussed how college life is very different from high school and how parents feel about sending their children to college. The picnic was a great reward for the scholars' hard work and a learning experience for the Maine Sea Coast Mission. The Mission listened to the scholars as they spoke and learned new ways to help them have a successful college experience.

Scholars are always grateful for the assistance that they received from the Maine Sea Coast Mission. One scholar said, “I would like to thank you for the scholarship. I plan to take my studies at Maine Maritime Academy very seriously so I can have a prosperous career and hopefully give something back the community in the future.” A second scholar said, “Thank you for helping me this year in regards to the scholarship. When I called your office I did not expect the Mission to be so helpful. The Mission went above and beyond for me and I really appreciate it. I will not let the Maine Sea Coast Mission down.”

12
MSCM
2007

Linda Thompson, Scholarship Committee member, and Carolyn Rittenhouse, EdGE Scholarship recipient.





BILL KUYKENDALL

Meeting Immediate Needs—One Family's Story

The Maine Sea Coast Mission helps many people with basic needs such as food, clothing, shelter, and companionship. One family in particular defines the work that the Mission does in Downeast Maine. Sally is a single mother trying her best to make a living and provide for her family. She never finished high school and works part time for minimum wage. She receives food stamps and fuel assistance which decrease each time her hours are increased. She and her daughter, Jenny, live in a trailer with little heat and no running water. Jenny struggled in school with academics and friends. Sally was barely making ends meet. The Mission provided them with many resources and today they are better able to meet the challenges of everyday life.

Sally and Jenny are like most people who live in poverty. They wonder everyday, “How long will the food last? How many more days do we have until the heating fuel runs out? How far can I go with the gas in my car? Will my car break down and leave me stranded and unable to get to work? What will I do without a pay day?”

Sally used the Food Pantry to supplement the food she buys. In addition, she and Jenny are connected to a family in Ohio through a program coordinated by the Mission, called Family to Family. Each month the families exchange letters and the Ohio family sends a package with food and other necessities. Sally and Jenny also buy clothing at the Thrift Shop and Jenny receives presents from the Christmas program. Fuel was provided to help heat their home with Emergency Assistance funds. Jenny has attended the EdGE afterschool program regularly for the past four years. She is paired with an adult EdGE mentor and has the additional support of a peer mentor as part of the EdGE afterschool program.

She also applied to the Mission's Housing Repair Ministry for plumbing to connect her house to a well and septic system. The Ministry arranged for a volunteer group from Byfield and Newburyport, Massachusetts to do the work. The group was large and included master carpenters, roofers and plumbers along with enthusiastic amateurs. With donations to cover the cost of materials, the group provided the expertise to bring water to the trailer. Then, when it was discovered that the trailer wasn't insulated, they returned to weatherize it. When the group said goodbye to Sally on the first snowy day in October, she thanked them and told them she was going to take a bubble bath for the first time in years.

Sally's employer recently increased her salary and gave her a full-time position with more responsibility. Jenny's grades are improving as is her ability to work with others. She continues to receive support in school and afterschool. The caring people and coordinated resources of the Mission gave Sally and Jenny a sense of hope and belief that they could make a better life for themselves.

Meeting Immediate Needs

Food Pantry in Cherryfield

The Food Pantry, located in Cherryfield at the Mission's Downeast Campus, provides nutritious food and fresh produce to people in the communities of Cherryfield, Milbridge, Harrington, Addison, Columbia, Columbia Falls, Steuben, Beddington and Deblois. Some individuals need help each month and others come as the need arises. There have been many new clients as living expenses increase and income decreases. A box of food will feed a family for one week which, for many, is an important supplement to food stamps. The Mission, with support from the Good Shepherd Food Bank, United States Department of Agriculture, local churches, organizations and community members met, the needs of over 3,000 people in 1,200 households in 2007 by providing over 45,000 meals.

Volunteers are integral to the success of the food pantry. Six very committed women regularly help Gena Norgaard, Food Pantry Manager, with every aspect of the program. They welcome clients, stock shelves, and fill the food boxes. Some have volunteered for over 20 years. Others help occasionally unpacking food orders and working in the garden.

The Mission Food Pantry has a unique element, fresh produce from an organic garden. This year, the harvest included corn, carrots, beets, summer squash, zucchini, cucumbers, tomatoes, peppers, green beans, peas, winter

squash, pumpkins, cantaloupe, broccoli and radishes.

Over 100 bushels of vegetables were harvested plus 52 squash, 45 pumpkins and 15 cantaloupes. Fresh produce is a luxury that many of our clients are unable to afford.

All direct service programs at the Maine Sea Coast Mission work together to meet the various needs of our clients. This occurred at Christmas when a woman came into the food pantry and told Gena about her situation. She had no heat, no cook stove, no food and no funds for Christmas. The Mission provided fuel, food, a crock pot, warm clothes and Christmas presents.

Bread of Life Food Pantry, Swan's Island

With the increased cost of fuel and bait and a significant decrease in lobsters being caught, many lobstermen and their families experienced food insecurity. Rev. Ken Dutille, Bread of Life Food Pantry Manager, reported an increase in the pantry's client list in 2007. The food pantry distributed 25,000 pounds of food in 2007 to residents on Swan's Island and Matinicus Island. The *Sunbeam V* takes food to Matinicus as needed.

At Christmas, the pantry provided fifty boxes of food to island residents and donated Christmas candy boxes to about 20 elderly residents.

Forty-eight dozen roses were donated by Hannaford Brothers to the Good Shepherd Food Bank in Brewer.

14
MSCM
2007

Food Pantry's garden in Cherryfield. CHARLIE HARRINGTON





Unloading Thrift Shop donations.

The roses were then donated to the Bread of Life Food Pantry. Ken and Pat Dutille delivered the roses to many of the women on the island. Some had never received roses in their life and were very surprised. For the next week, roses were the centerpiece on many island tables.

The Food Pantry benefits many people. One elderly lady was so happy she said; “Wow, I haven’t had any bread for over a week, now I can have a sandwich.” Another person said that all they had in their cupboard was an onion. One day, an elderly person told Rev. Dutille, “I had to make the decision; will it be food or fuel this month? Because of the Bread of Life Food Pantry, I can have both.”

Thrift Shop

The Mission Thrift Shop provides high quality, gently used clothing, and household items at a price that is affordable to all. The shop is clean, attractive and welcoming. Customers are greeted with a smile and many stay to visit once they’ve made a purchase. Almost 50,000 items including clothing, coats, shoes, household items, furniture, and books were recycled and sold.

The Thrift Shop has a voucher program for people who have experienced hardships, such as a fire, domestic violence, or insufficient funds. The voucher program allows people to obtain items at the Thrift Shop. Marilyn Nickson, Manager, Laurie Merchant, Showroom Supervisor, and the staff work with other

Mission programs to identify and help people who need food, clothing, and repairs to their homes. These individuals are referred to various Mission programs for support.

Each year the shopping area in the Thrift Shop is improved. This year, a lighted display case was donated. This allowed the shop to replace the original counters and rearrange the front of the store for better flow. The case provides an attractive setting for jewelry and special items and makes the showroom more elegant and organized.

Emergency Financial Assistance

In 2007, the Mission assisted 190 households in Hancock and Washington Counties with emergency financial assistance. The majority of assistance was for fuel oil, but assistance was also given for car repairs, electricity, food, frozen pipe repair, sewer and water bills, mortgage, rent, plumbing, an eye exam, and glasses. The Mission seeks to connect appropriate Mission programs to those seeking assistance. One example of this is described below.

The Mission was contacted by a woman named Mary. She is raising her two grandchildren because her son is serving in the U.S. military in Iraq. The children’s mother suffers from mental illness and is incapable of taking care of the children. Mary has limited means and needed some assistance. First, we provided oil for her fuel tank. Then, we provided mattresses and bedding

15
MSCM
2007

“I had to make the decision; will it be food or fuel this month? Because of the Bread of Life Food Pantry, I can have both.”

FOOD PANTRY PATRON





BILL KUYKENDALL

from our Thrift Shop and Christmas presents from our Christmas Program. Mary was very appreciative and from time to time she calls to let us know that she will be just fine and that her son will be home soon.

The Christmas Program

The Christmas Program met with great success again in 2007 having provided 15,000 presents to nearly 3,000 individuals with personalized gift packages. Among the recipients were 400 pre-school children and 600 nursing home residents. While names are compiled and submitted by either teachers or staff, there are many other means by which people come to participate in this exciting annual event.

On the outer islands, for example, a volunteer is selected to represent those who will be present in the community during the holiday season. The representative, or “elf,” then collects pertinent information from each participant. When the participants’ clothing sizes, interests, and hobbies have been recorded, the data is forwarded to the Mission where an appealing and appropriate bundle of goods is assembled from the gathered donations.

A similar format for name collection is utilized for numerous towns in Downeast Maine. The towns in which an elf is currently enlisted include: Jonesboro, Addison, Masons Bay, Milbridge, Harrington, Winter Harbor, Beals, Cutler, Steuben, Cherryfield, Jonesport, Eastport, Sullivan, and Columbia Falls. Both these “elves” and the island representatives are integral to

the Christmas Program’s success. The representatives’ community awareness enables the program staff and its volunteers to better serve their neighbors and friends.

The Mission collaborates with several agencies and churches in a coordinated Christmas Program called the Giving Tree. We work together to avoid duplication of effort and to identify the neediest. It is not uncommon for those who receive assistance through such agencies to also benefit from receiving a gift package from the Maine Sea Coast Mission. However, it is the Christmas Program that truly benefits from the agencies referrals and their extensive knowledge of those they support.

These methods of recognizing people in need have proven to be very valuable, but not entirely inclusive. For this reason, the Mission continues to invite the residents of the outer islands and Hancock and Washington Counties to contact us directly with requests. In 2007, over 300 people did just that. The Christmas Program will continue to seek additional avenues for locating recipients and continue to support those who have come to rely on our gifts.

Housing Repair Ministry

The Maine Sea Coast Mission Housing Repair Ministry hosted five church groups at the Downeast Campus in Cherryfield: two from Massachusetts, two from Pennsylvania, and one from Maine. The group from Byfield/Newburyport, Massachusetts, volunteered twice. The five groups brought over 200

volunteers to assist with various home repair projects for low income families in western Washington County. The projects varied in size and impact, from building a set of steps, to providing a family with a water line to their trailer and replacing all the plumbing under the trailer, to installing a septic tank and connecting it to a leach field. This was also a landmark year where we used available funds to work with local contractors to help a family with no running water.

The Housing Ministry helped 11 low income families and two churches with some very significant projects that would not have been completed if not for this program. The Mission is able to fill the gaps and provide help for families who fall through the cracks of the system. We learn more each year and become better able to meet the needs of our neighbors with the expert help of the volunteer groups that return each year.

Senior Companion Program

The Maine Sea Coast Mission's Senior Companion Program serves as a station for the Senior Companion

Program of the University of Maine Cooperative Extension. The University provides a helpful stipend to individuals 60 years of age or older, particularly those on limited incomes, who are hired as Senior Companions.

The Senior Companions touch the lives of adults who need extra assistance to live independently in their own homes or communities. They serve elderly individuals who are homebound, have disabilities, terminal illnesses, or require nursing care after an extended hospital stay. They also offer respite for regular caregivers. The companions add richness to their clients' lives in basic but essential ways by offering assistance with simple chores, grocery shopping, transportation to medical and other appointments, companionship and friendship. Also, the Senior Companions often coordinate with the Maine Sea Coast Mission's Food Pantry to help transport their clients' food.

The Mission sent requests to hospitals and low income housing units to find seniors in need of help. In 2007, the Mission supervised seven Senior Companions serving 46 clients in Washington County.

Housing Repair Ministry youth volunteers.



Financial Statements 2007

The financial information presented on this page is derived from the Maine Sea Coast Mission's financial statements, audited by Foster, Carpenter, Black & Co., LLP, Certified Public Accountants, of Bangor, Maine. Copies of the full report may be obtained by contacting the Mission at 207.288.5097.

Statement of Financial Position

ASSETS

Current Assets	35,699,000
Fixed Assets	2,845,000
TOTAL ASSETS	38,544,000

LIABILITIES AND NET ASSETS

Current Liabilities	64,000
Long-term Liabilities	15,000
Net Assets	38,465,000
TOTAL LIABILITIES and NET ASSETS	38,544,000

Statement of Activities

OPERATING REVENUE, GAINS AND OTHER SUPPORT

Contributions, Grants and Events	1,724,000
Program Revenues	86,000
Dividend and Interest Income (Net)	284,000
Endowment Draw	1,171,000

TOTAL OPERATING REVENUE, GAINS AND OTHER SUPPORT	3,265,000
---	------------------

OPERATING EXPENSES

PROGRAM SERVICES

Island Outreach	797,000
Youth Development	904,000
Meeting Immediate Needs	649,000
TOTAL PROGRAM SERVICE EXPENSE	2,350,000

SUPPORT SERVICES

Fundraising and Public Relations	295,000
Management and General	270,000
TOTAL SUPPORT SERVICE EXPENSE	565,000

TOTAL OPERATING EXPENSE	2,915,000
--------------------------------	------------------

CHANGE IN NET ASSETS FROM OPERATIONS	350,000
---	----------------

NON-OPERATING INCOME, GAINS AND LOSSES

Restricted Contributions	2,018,000
Restricted Grants	465,000
Restricted Investment Income	86,000
Restricted Investment Gains and Losses	777,000
Unrestricted Investment Gains and Losses (net of Draw)	1,202,000

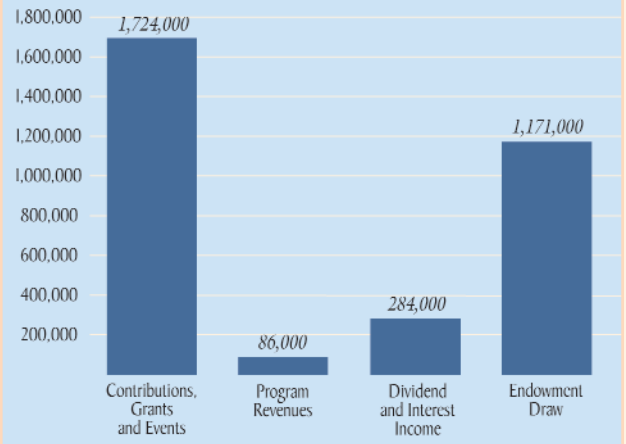
CHANGE IN NON-OPERATING NET ASSETS	4,548,000
---	------------------

INCREASE (DECREASE)

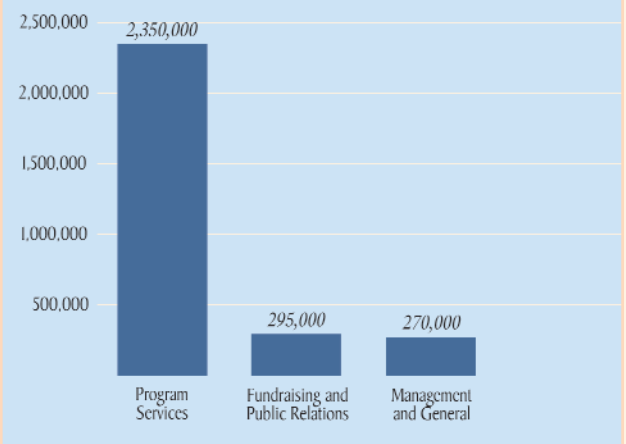
IN TOTAL NET ASSETS	4,898,000
NET ASSETS – BEGINNING OF YEAR	33,567,000

NET ASSETS – END OF YEAR	38,465,000
---------------------------------	-------------------

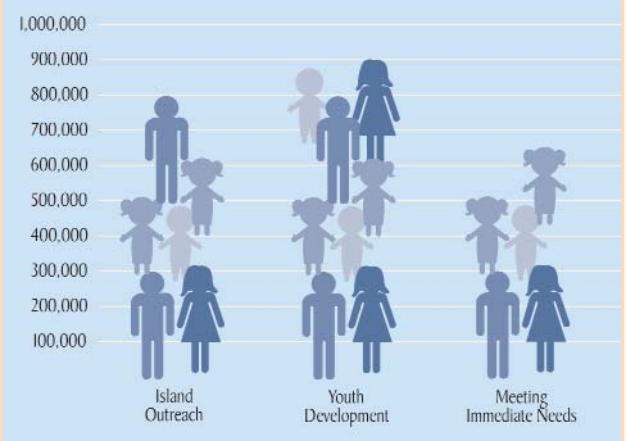
Activities



Operating Expenses



Total Program Expenses



18
MSCM
2007

100% of all contributions go to support Maine Sea Coast Mission programs.
Administration and fundraising expenses are funded by income from the Mission endowment.

2007 Donors

100,000+

Anonymous
The Barr Foundation
Mr. and Mrs.
Christopher Branson
Mr. and Mrs. Lester
L. Coleman
Mrs. Cornelia A. Greaves Bates

\$25,000-\$99,999

Anonymous
Mr. and Mrs. Tristram M. Colket
Mr. and Mrs. Wesley C. Dudley
Mr. and Mrs. Joseph G. Fogg, III
Mr. and Mrs. Fowler-Greaves
Ms. Patricia Greaves
Mrs. Penelope Harris
Mrs. Marjorie D. Twombly

\$10,000-\$24,999

Anonymous
Aristotle Investors LTD
Bar Harbor Bank & Trust
Ms. Barbara David
Mrs. Kathryn Davis
Ambassador and Mrs. Charles
A. Heimbald, Jr.
Mr. and Mrs. Sterling Hitchcock
Mr. and Mrs. Henry E. Hosley, III
Morton-Kelly Charitable Trust
Mr. and Mrs. Robert D. Stillman
The Robbins-De
Beaumont Foundation
Mr. and Mrs. Gavin H. Watson, Jr.

\$5,000-\$9,999

Mr. and Mrs. Russell S. Beede
Mr. Charles C. Butt
Mrs. Edith R. Dixon
Mr. and Dr. Benjamin R. Emory
Mr. George A. Hambrecht and
Ms. Andrea H. Fahnstock
Mr. and Mrs. Jeffrey S. Horowitz
Mr. Peter Hunt
Jasper Wyman & Sons
Mr. and Mrs. James C. Lewis
Mr. and Mrs. Gary P. Malone
Mr. and Mrs. John K. Marshall
Prime, Buchholz & Associates, Inc.

Mrs. Jean O. Robinson
Sigma Kappa Foundation, Inc.
Mrs. Diana Davis Spencer
The First
The Gratitude Foundation
Mr. and Mrs. Charles B. Wakeman

\$1,000-\$4,999

Acadia Corporation
Dr. Charles B. Alexander and
Mr. Tim McCormick
Ann Arbor Area Community
Foundation
Mr. and Mrs. Thomas Armstrong
Atlantic Acceptance Corp.
Atlantic Oakes by the Sea
Mr. Alan L. Baker
Mr. and Mrs. Eric Beckjord
Mr. and Mrs. Fred S. Benson
Mr. and Mrs. Curtis L. Blake
Mr. Gordon Bok and Ms. Carol Rohl
Mrs. Charlotte T. Bordeaux
Mr. and Mrs. Kenneth H. Brownell
Mrs. Margaret Buchanan
Mr. and Mrs. Ordway Burden
Mr. Derek Burley and
Mrs. Polly Hall-Burley
Mrs. Leone J. Burrage
Mrs. Billie Cargile
Mr. and Mrs. John H. Carman
Child & Family Opportunities
Christ Church of Dark Harbor
Church of the Redeemer
New Rochelle, NY
Mr. and Mrs. Roger S. Clapp
Coastal Kayaking Tours & Acadia
Bike & Canoe
Mr. and Mrs. Kenneth H. Colburn
Mr. and Mrs. John M. Cooper, Jr.
Ms. Vickie L. Cooper
Ms. Madeleine G. Corson
Mrs. Sylvia Y. Cough
Cranberry Isles Congregational
Church
Mr. and Mrs. David A. Davis
Dead River Company
Rev. and Mrs. Gary A. DeLong
Mrs. Josephine H. Detmer
Mr. and Mrs. Ford B. Draper, Jr.

Mrs. Ruth B. Durfee
E.L. Shea Inc.
Mr. and Mrs. William E. Eason, Jr.
Eaton Peabody
Emergency Food and Shelter Program
Mrs. Ellen H. Emery
Mr. S. Osborn Erickson
Mr. and Mrs. Gordon I. Erikson
Mr. and Mrs. David P. Falck
First Congregational Church
Nantucket, MA
First Congregational Church UCC
of Camden
Mr. and Mrs. Edward T. Fogarty
Mrs. Anne Franchetti
Frederick P. and Mary Buford Hitz Trust
Ms. Lorraine Gawronski and
Mr. Edward L. Allen
Ms. Sally A. Gibson
Mr. and Mrs. Sheldon M. Goldthwait
Mr. and Mrs. Evan R. Goley
Miss Theodosia J. Gray
Mr. and Mrs. Richard Greene
Mrs. Lloyd P. Griscom
Gurnee Community Church
Mr. and Mrs. Donald C. Hanlon
Mr. and Mrs. Harold Hatch
Ms. Beverly Healy
Mr. and Mrs. Robert K. Ho
Mr. John C. Hoffmann
Mr. and Mrs. William M. Houldin, Jr.
Mr. and Mrs. Hans Humes
Dr. and Mrs. Frederick E. Hutchinson
Mr. and Mrs. Duane Iselin
J.T. Rosborough, Inc.
Mr. and Mrs. L. Oakley Johnson
Mr. and Mrs. Robert A. Jones
Mr. and Mrs. H. Lee Judd
Mr. Dewey Kerr, Jr.
Kimball Shop & Boutique
Mr. and Mrs. Philip B. Lape
Mr. and Mrs. George G. Lewis
Mr. Richard Loutzenheiser and
Ms. Lorraine L. Edwards
Lynch Hill Farms, Inc.
Machias Savings Bank
Mr. and Mrs. Arthur C. Martinez
Mr. and Mrs. Clement E.
McGillicuddy

Mrs. Lynne P. McGinn
Mr. and Mrs. Robert F. McKown
Mr. and Mrs. Dana G. Mead
Milbridge Congregational Church
Mr. and Mrs. Gerrish H. Milliken
Mr. and Mrs. Thomas D.C. M. Morris
Morrison Chevrolet, Inc.
Mrs. Patricia G. Mudge
Mr. David B. Murphy
Mr. and Mrs. Joseph M. Murphy
Mr. and Mrs. John D. Myles
Mr. and Mrs. Henry E. Niemitz
Ambassador and Mrs. Chester
E. Norris, Jr.
North Haven Summer Services, Inc.
Mr. and Mrs. Fred Osborn, III
Plymouth Congregational Church
Coconut Grove, FL
Mr. and Mrs. Jon L. Prime
Ms. Rita A. Rawley
Ms. Mary C. Rea
Miss Claire A. Richardson
Mrs. Cornelia L. Robinson
Mr. and Mrs. John R. Robinson
Mr. Robert A. Roth
Mr. and Mrs. John E. Sather
Mr. and Mrs. Alden H. Sawyer, Jr.
Mr. and Mrs. Timothy P. Schieffelin
Mr. and Mrs. John D. Schlegel
Mr. Henry L.P. Schmelzer and
Ms. Cynthia Livingston
Mr. Peter B. Schwab
Second Baptist Church Sewing
Society
Ms. Tracy L. Shaffer
Dr. and Mrs. Dennis L. Shubert
Simmons Foundation
Small Animal Clinic
Mr. and Mrs. Kenneth Smith
Mr. Stockton N. Smith
Mr. Karl Smith and Ms. Julie Canniff
Snowman Printing & Presort Express
Ms. Ann R. Soltesz
Mr. and Mrs. Phineas Sprague
Squirrel Island Chapel Assn.
Stanley Subaru
Mrs. Henrietta F. Stewart
Mr. and Mrs. Tim Stewart
Mr. and Mrs. William P. Stewart

Ms. Isabel F. Thacher
The David Rockefeller Fund, Inc.
The Jackson Laboratory
The Wyeth Foundation
Town of Swan's Island
Mr. and Mrs. Glenn G. Tucker
Union Trust Company
Ms. Katherine Van Dyke and
Mr. Stephen Grasberger
Mr. and Mrs. Philippe A. Van Marcke
Mrs. Charlotte C. Weber
Dr. Katherine Wellman
Mr. and Mrs. John W. L. White
Mr. and Mrs. Charles D. Whittier, II
Mr. Stuart Woods

\$500-\$999

Mrs. Charles F. Adams
Ms. Susan K. Allen
Atlantic Baptist Church
Ms. Lydia M. Barnes
Mr. and Mrs. Charles A. Benore
Mr. Forrest Berkley
Mr. and Mrs. C.H. Breedlove
Mr. and Mrs. Edward S. Bromage
Mr. and Mrs. Shepard Brown
Mr. and Mrs. William H. Buchanan, Jr.
Mr. and Mrs. Nicholas R. Burke
Mrs. Lucy A. Burr
Mr. and Mrs. Gilbert Butler
Mr. and Mrs. Roc R. Caivano
Cappy's Chowder House
Mr. and Mrs. Roger S. Clapp
Mr. and Mrs. Ira G. Colby, III
Mr. and Mrs. John S. Crompton
Mr. Raymond J. Decker
Mr. and Mrs. William F. Dohmen
Mr. and Mrs. David Donovan
Duck Trap Woodworking
Mr. and Mrs. Richard J. Duffy
Mr. and Mrs. Yvan E. Dupuy
Mr. Marvin S. Edgerton
Mr. and Mrs. Charles Erhart
Mrs. Celia K. Erskine
Mr. and Mrs. Donald A. Fishburne
Rev. and Mrs. Fred S. Foerster
Dr. and Mrs. Richard R. Fox
Mr. and Mrs. W. West Frazier, IV
Freshwater Stone and Brickwork, Inc.



Mr. Gregory Frosberg and
Ms. Mary C. Cary
Mr. and Mrs. Ed T. Girvin
Mr. and Mrs. Charles P. Gogolak
Mr. and Mrs. John P. Grace Shethar
Mr. and Mrs. John W. Gussenhoven
Dr. Kathleen A. Harper

Salmon Point Sunbeam Fair
Mr. Andrew L. Schieffelin
Mr. and Mrs. George T. Shaw
Mr. and Mrs. James C. Siron
Mr. and Mrs. Chadbourn H. Smith
Ms. Harriet F. Smith
Smith Barney



BILL KUYKENDALL

Mr. and Mrs. Winston R. Hindle, Jr.
Dr. and Mrs. John P. Hoche, MD
Mr. and Mrs. Eastham S. Hockmeyer
Ms. Betsey Holtzmann
Mr. and Mrs. James R. Houghton
Ms. Malen R. Hsu
Mr. and Mrs. Joseph M. Hughes
Mr. and Mrs. Leslie A. Jones
Jordan-Fernald Funeral Home
Mr. and Mrs. E. Robert Kinney
Mr. and Mrs. James Knight
Mr. and Mrs. Christopher J. Look
Mr. and Mrs. Ralph Lowell, Jr.
Mr. and Mrs. Nigel S. MacEwan
Machias Savings Bank
Ms. Miriam E. Malkasian
Mr. and Mrs. Stanley A. Martin
Mr. and Mrs. John C. Maxwell, Jr.
Mr. and Mrs. Joseph L. McEntee
Mr. and Mrs. Mitchell T. McMillen
Mercer & Sons
Mrs. Jean P. Messex
Mr. and Mrs. Fred J. Meyer
Rev. and Mrs. James D. Miller
Dr. Aurobinod A. Nair
North Haven Community School
Ms. Sylvia G. Norton
Mr. Leo V. Osterman
Mr. and Mrs. Donald C. Parker
Parker Lumber Company, Inc.
Mr. Richard W. Pendleton, Jr.
Mr. and Mrs. L. Anthony Piccola
R.H. Foster Energy, LLC
Mr. and Mrs. Leslie Ranquist
Mr. and Mrs. Stephen H. Richards
Mr. Harry Russell, Jr.

Southern Ocean Congregational
Church
St. Mary St. Jude's Rectors
Discretionary Fund
St. Matthew's United Church of Christ
Mr. W. Mead Stapler
Mr. and Mrs. Paul J. Sullivan
Mr. and Mrs. Pete Teel
The Ellsworth American
The First Church of Christ in
Longmeadow
Mr. and Mrs. Billy B. Thompson
Mr. William C. Trimble, Jr.
Mr. and Mrs. Robert W. Upham, Jr.
Viking, Inc.
Mr. Alexander B. Ward
Mr. and Mrs. Bradford S. Wellman
Mr. and Mrs. Winston H. White
Mr. and Mrs. Donald J. Williams
Mr. Douglas Williams
Wilson Memorial Chapel
Ms. Nancy C. Woodward
Mr. and Mrs. Peter Wray
Mr. and Mrs. Jamie Wyeth
Mr. and Mrs. Robert H. Zinn
Mrs. Jane S. Zirkilton

\$100-\$499

Ms. Sarah W. Abbot
Mr. and Mrs. Charles F. Adams, III
Mr. and Mrs. Jack Adams
Mr. and Mrs. Robert P. Adelman
Ms. Phillida M. Alcantar
Mr. and Mrs. Raymond Alden, Jr.
Alfred Parish Church
Mr. and Mrs. Donald D. Allen

Mrs. Helen Marie G. Allen
Mr. and Mrs. Wallace M. Alston
Mr. Ronald Ames and
Ms. Emily C. Rantala
Mrs. Ruth C. Amrein
Ms. Barbara R. Anderson
Ms. Joellen Anderson
Mrs. Kathleen Andrews
Mr. and Mrs. Paul Andrews
Anonymous
Mr. and Mrs. William S. Arata
Mr. and Mrs. Adrian L. Asherman
Mr. and Mrs. Fred Ashmore
Mr. and Mrs. Joseph J. Attura
Ms. Anne Elise Aubry
Rev. Paul L. Austin
Dr. Susan R. Austin
Mr. and Mrs. Donald Bailey
Ms. Ellen B. Baldwin
Mr. Richard Bannister
Ms. Ruth Bannister
Mr. and Mrs. Kenneth E. Barrett
Mr. and Mrs. Walter J. Barrett
Mrs. Patricia Bartlett
Mr. and Mrs. Robert C. Bartlett
Mr. Jarvis S. Barton
Mr. H. B. Beach
Mr. and Mrs. Calvin Beal, Jr.
Ms. Norma S. Beal
Mr. and Mrs. John L. Beaman
Dr. and Mrs. Robert T. Beattie, MD
Mr. and Mrs. Robert Bechtold
Mr. and Mrs. Ray E. Becker
Mr. and Mrs. Henry P. Becton
Dr. Paul Beisswenger M.D. and
Ms. Carolynne Krusi
Mr. Robert S. Benchley
Mr. and Mrs. William Benjamin, II
Mr. James G. Bennett, III
Mr. and Mrs. Philip G. Bennett
Mr. and Mrs. Lloyd Bergeson
Mr. and Mrs. Dan Berry
Mr. and Mrs. Jacob Bethune, Jr.
Big Woods Congregational Church
Dr. and Mrs. Llewellyn

B. Bigelow, MD
Mr. and Mrs. Roger F. Billings
Mr. and Mrs. Harry Bissell
Mr. and Mrs. Bruce B. Blake
Mr. and Mrs. Benjamin Blaney
Mr. and Mrs. Richard M. Blaney
Ms. Frances Bodell
Dr. and Mrs. Robert C. Bone
Dr. and Dr. Alan R. Booth
Ms. Victoria Boothby Ross
Mrs. Florence Borda
Mr. and Mrs. James E. Bousfield
Mr. Robert Bowman and
Ms. Lori Tradewell
Mr. John W. Brace
Mr. and Mrs. Nathaniel C. Bradley
Mr. and Mrs. Harry Brawley
Mr. Robert Breen and
Ms. Deborah R. Wade
Ms. Marianne W. Brenton
Mr. and Mrs. John Briggs
Mr. and Mrs. Reeve Bright
Mrs. Patricia M. Briska
Ms. Dianna Brochendorff
Mr. and Mrs. Burrow Brooks
Dr. and Mrs. David C. Brooks, MD
Mr. and Mrs. Mark Brown, MD

Mr. Thomas G. Brown, Jr.
Mr. Willard W. Brown, Jr.
Dr. Madonna E. Browne
Mr. Ashley Bryan
Ms. Molly B. Bryan
Mr. and Mrs. Gerald E. Buckwalter
Ms. Laura T. Bullitt
Mr. and Mrs. J. Paul Bullock, Jr., M.D.
Ms. Carol Bult
Mrs. Harriet B. Burnham
Capt. and Mrs. Ernest H. Burt, Jr.
Mr. and Mrs. William M. Bush, Jr.
Mrs. Justine M. Caldwell
Mr. and Mrs. John W. Campbell, Jr.
Mr. and Mrs. Salvatore Carabetta
Ms. Francine Carraro
Mr. and Mrs. Robert H. Carter
Ms. Gail Caruso and
Mr. William Green
Mr. and Mrs. Richard C. Carver
Mr. and Mrs. Richard H. Catlett, Jr.
Centre Street Congregational Church
Mr. Dean Cerutti and
Ms. Angela Festa
Ms. Ruth B. Chapin
Mr. Robert P. Chaplin
Mr. and Mrs. Morris Cheston, Jr.
Mr. and Mrs. Eric Chetwynd, Jr.
Mr. Christopher A. Childs
Christ Church of Kennebunk
Dr. and Mrs. Leonard R. Ciuffreda
Mr. and Mrs. Harold M. Clark
Ms. Sarah L. Clark
Mr. and Mrs. John Clarke
Mr. and Mrs. Richard R. Clemence
Mr. and Mrs. Maynard G. Clemons
Ms. Sally F. Clifford
Mr. and Mrs. James L. Clunan
Mr. and Mrs. Lawrence H. Coffin
Mr. and Mrs. Francis I.G. Coleman
Community of Christ Church of
Vinalhaven
Congregational Church of the
Messiah, Los Angeles
Mr. Edward H. Conklin
Conners Emerson School
Dr. and Mrs. John D. Constable
Ms. Elizabeth C. Conway
Mr. and Mrs. Warren Cook
Mr. William A. Cook
Mr. and Mrs. Clifton N. Cooke
Mr. and Mrs. Frederick H. Corey, Jr.
Mr. and Mrs. Louis R. Cos
Mr. and Mrs. James E. Cox
Mr. and Mrs. Jim B. Cox
Mr. and Mrs. Thomas J. Cox
Mr. Robert Cox and
Ms. Ann Hartenstein
Mr. and Mrs. Robert O. Crabbs
Mr. and Mrs. Richard J. Crandall
Ms. Lucy Creevey
Mr. and Mrs. J. Max Creswell
Ms. Mary Crichton
Mr. Thomas G. Crikelair
Ms. Sally Scully Crock
Mr. Matthew J. Cullen, Jr.
Ms. Pamela Curran
Mr. and Mrs. Peter A. Curry
Mr. and Mrs. Albert H. Curtis, II
Mrs. Janet Cushman
Sen. and Mrs. Dennis S. Damon
Ms. Joan B. Darby

David Community Church
Ms. Nancy L. Davis
Ms. Ruth C. Davis
Mrs. Roberta T. Dawson
Mr. Joseph P. Day
Mr. Joseph P. Dearborn
Mr. and Mrs. Dickinson R. Debevoise
Mr. Leonard Demuro and
Ms. Rita E. Johnston
Mr. and Mrs. John A. DeTurris
Ms. Deborah DeWalt
Ms. Alix C. Diana
Mr. and Mrs. John R. Dice
Mr. and Mrs. Malcolm Dick
Dr. and Mrs. Walter Dicks
Mr. and Mrs. Charles D. Dickey, Jr.
Mr. and Mrs. S. Whitney Dickey
Mrs. Douglas Dillon
Mr. Richard C. Dimond
Capt. and Mrs. John T. Dinan, Jr.
Capt. and Mrs. Almer L. Dinsmore
Ms. Hope S. Dooley
Dr. and Mrs. Charles Dorr
Mr. and Mrs. Alexander
Doudoumopoulos
Mr. Richard Dudman and
Mrs. Helen Sloane Dudman
Ms. Carol M. Duhme
Mr. and Mrs. Donald C. Duncan
Mr. James Dyke and
Mrs. Helen L. Porter
Mr. and Mrs. Lawrence C. Eaton
Edd B. Hamor & Associates, Inc.
Dr. and Mrs. Murray Eden
Edgecomb Congregational Church
Mr. Jon Edwards and Ms. Nancy Fox
Elijah Kellogg Church
Ms. Jane Ellingswood
Emmaus Lutheran Church
Mrs. Celia P. Emmons
Ms. Elizabeth A. Ennis
Mr. and Mrs. Frederic A. Eustis, II
Mr. and Mrs. Gifford P. Ewing
Mr. and Mrs. Michael E. Fawley
Federated Church in Skowhegan
Federated Church of Thomaston
Mr. and Mrs. H. Allen Fernald
Mr. Thomas J. Fernald
Mr. Ronald P. Ferri, Sr.
First Baptist Church of Blue Hill
First Church of Christ Congregational
Lynn, MA
First Congregational Church
East Haven, CT
First Congregational Church
Kingston, NH
First Congregational Church of
Cherryfield
First Congregational Church of Kittery
First Congregational Church of
Millinocket
First Congregational Church of
North Anson
First Congregational Church of
South Paris
First Congregational Church of
Scarborough
First Congregational Church of
Searsport
First Congregational Church UCC of
Brewer
First Congregational Church UCC of Gray

First Parish Congregational Church of York
 First Parish Congregational Church UCC of Yarmouth
 First Presbyterian Church Titusville, NJ
 Mr. and Mrs. Julian D. Fischer
 Dr. and Mrs. Allen M. Fisher
 Ms. Suzanne Fitzgerald
 Mr. and Mrs. Robert J. Flynn
 Dr. and Mrs. John N. Forrest, Jr.
 Mr. and Mrs. Richard J. Forsley
 Ms. Elizabeth C. Forster
 Founders Congregational Church
 Mr. and Mrs. Rodney B. Fox
 Freedom Charitable Foundation
 Mr. and Mrs. Charles A. Furciniti
G Ms. Nancy J. Gabrielson
 Mr. and Mrs. John M. Galipeau
 Ms. Carla Ganiel
 Garden Club of Mt. Desert
 Ms. Jane W. Garfield, MD
 Mr. and Mrs. Murray Gartner
 Mr. and Mrs. Nicholas T. Genimatas
 Mrs. Barbara Vinal Gent
 Mr. Dwight Gertz and
 Ms. Virginia Welles
 Mrs. Sherry Geyelin
 Mr. and Mrs. John R. Gilchrist
 Mr. and Mrs. Robert L. Gilfillan
 Mr. and Mrs. William L. Gilfillan
 Mr. and Mrs. Charles Giurtino
 Ms. Jessie A. Godfrey
 Mr. and Mrs. Thomas Godfrey
 Mr. and Mrs. James H. Goff
 Ms. Mary Cox Golden
 Ms. Charlotte H. Gowen
 Fr. James M. Gower
 Dr. Joel Graber
 Mrs. Margaret F. Grace
 Mr. Samuel Gramiccioni and
 Ms. Patricia E. Bonness
 Mr. Philip Grausman and
 Ms. Judith Petrovich
 Mr. and Mrs. Terrence H. Gray
 Bishop and Mrs. J. Clark Grew
 Mr. and Mrs. Charles S. Griffen
 Ms. Frances Grindell
 Mr. Thomas Grindley and
 Mrs. Christine R. Norton
 Mr. and Mrs. Michael A. Gurtler
 Mr. Barry Gutrad
 Mr. Gordon A. Haaland
H Mrs. Barbara P. Hadlock
 Mr. and Mrs. Paul F. Haertel
 Ms. Mary R. Haines
 Ms. Susan M. Halby
 Mr. David Hales and
 Ms. Barbara McLeod
 Mr. and Mrs. Fletcher G. Hall
 Mr. and Mrs. L. Gordon Hamersley, Jr.
 Mr. A. Ricker Hamilton
 Mr. Charles G. Hamlin
 Mr. Morris Hancock and
 Rev. Linda Peyton-Hancock
 Hancock United Church of Christ
 Mr. and Mrs. Victor Hand
 Hannaford 224
 Ms. Beverly Hannett-Price
 Mr. and Mrs. J. Munk Hansen
 Mr. and Mrs. Eldred H. Harmon
 Mr. and Mrs. Joe Haroutunian
 Mr. and Mrs. Raymond W. Harrison

Mr. and Mrs. Benjamin E. Haskell
 Mrs. Ann E. Haslett
 Mr. and Mrs. Thomas R. Haslett
 Dr. and Mrs. Robert Hayes
 Mr. and Mrs. Dana R. Haynes
 Mrs. Kimberly Haynes and
 Mr. David M. Znamierowski
 Mr. and Mrs. Bruce Hazelton
 Mr. and Mrs. Robert E. Healing
 Mr. Fred Hendler and
 Ms. Nancy Martin
 Mr. Merton G. Henry
 Henry S. and Patty J. Russell Trust
 Ms. Barbara F. Hepburn
 Mr. and Mrs. William Hersey
 Mrs. Bessie H. Hersom
 Ms. Winifred L. Hess
 Ms. Caroline A. Hetzel
 Ms. Elizabeth Hicken
 Ms. Margaret Hinman
 Ms. Frances S. Hitchcock
 Ms. Erin Hitchcock and
 Mr. Christopher A. Fogg
 Mr. and Mrs. Thomas O. Hobbs
 Ms. Nancy J. Hoeflich
 Mr. and Mrs. Robert E. Holland
 Mr. and Mrs. David M. Hollenbeck
 Mr. and Mrs. Steve B. Homer
 Mr. and Mrs. Steven F. Homscheid
 Mr. Michael M. Horn
 Dr. and Mrs. William R. Horner
 Mr. and Mrs. Stephen D. Hoyt
 Ms. Elaine Hughen
 Mr. and Mrs. Marshall B. Hughes
 Mr. John H. Hull
I Mr. and Mrs. John C. Hutchins
 Mrs. Angela M. Inhof
 Incarnation Church UCC Newport, PA
 Mr. Ronald Indorf and
 Ms. Donna E. Elliott
 Rev. and Mrs. Robert A. Ingraham
 Mr. and Mrs. David Ingram
 Mr. and Mrs. Stephen M. Ingram
 Islesford Congregational Church
J J.H. McPartland & Sons
 Mr. and Mrs. Dick Jackson
 Mr. and Mrs. William H. James
 Jeff Dobbs Productions, Inc.
 Mr. and Mrs. Simon John
 Mr. and Mrs. Allen S. Johnson
 Mr. and Mrs. Michael Johnson
 Jonesboro Union Church
 Jonesboro Union Church Ladies
 Auxiliary
K Ms. April Karen
 Ms. Elizabeth R. Kast
 Mrs. Susan W. Katzev
 Mr. and Mrs. E. Arthur Kean
 Mr. and Mrs. Charles R. Keen
 Mr. John Keffer and
 Ms. Mary Jo Walters-Keffer
 Mr. Stephen Keiser and
 Ms. Karen Perry
 Mr. Morris C. Kellett
 Mr. and Mrs. James Kellogg
 Mr. and Mrs. John H. Kellogg
 Mr. and Mrs. John N. Kelly
 Mr. and Mrs. Richard J. Kelly
 Mr. and Mrs. Edmund H. Kendrick
 Mr. William H. Killam
 Ms. Elizabeth S. King
 Ms. Evelyn L. King

Ms. Kathleen Rae King and
 Mr. Roger E. Dollarhide
 Ms. Ellen Kingsbury
 Klemme Family Trust
 Mr. and Mrs. Jack G. Knebel
 Ms. Wendy Knickerbocker
 Sen. Ted Koffman and
 Mrs. Joanna Allen
 Ms. Anne Kozak
 Mr. and Mrs. Jon G. Kuhl
 Mr. and Mrs. Richard W. Kurtz
L Dr. Barry M. Lamont, MD
 Dr. Carlisle P. Landel and
 Mrs. Kathleen M. Lawler
 Mr. and Mrs. Richard Langlois
 Mr. and Mrs. John E. Lape
 Mrs. Hope W. Lapsley
 Ms. Annette G. Lasley
 Ms. Persis G. Laverack
 Law Offices of Doyle & Nelson
 Ms. Bain S. Lee
 Mr. and Mrs. Christopher C. Leighton
 Mr. and Mrs. Edward H. Leiter
 Ms. Cathy K. Lewis
 Mr. and Mrs. John M. Lewis
 Ms. Rosalind Lewis
 Mr. and Mrs. Scott C. Lewis
 Ms. Verna C. Lewis
 Mr. Paul Lewis and
 Mrs. Kristen Carlson-Lewis
 Mr. Charles Libby and
 Ms. Catherine E. Whitney
 Mr. and Mrs. Henry F. Lind, Jr.
 Mrs. Barbara B. Lindsey
 Mr. and Mrs. Edward C. Lingel, II
 Mr. and Mrs. James J. Linnane
 Mr. and Mrs. Mark D. Litterski
 Ms. Deborah W. Loftus
 Mr. Per H. Lofving and
 Mrs. Martha Evans
 Mr. and Mrs. Stephen B. Loring
 Lovell United Church of Christ
 Mr. and Mrs. K. Prescott Low
 Mrs. Lorraine S. Lowell
 Ms. Katherine MacDonald
 Machias Business Group
 Mr. and Mrs. Ward D. Mackenzie
 Mr. and Mrs. J. Donald Mackintosh
 Mr. and Mrs. Meredith H. Mackusick
 Mr. and Mrs. James C. MacLeod
 Mr. and Mrs. John M. Macomber
 Mr. and Mrs. Ronald P. MacQuinn
 Ms. Janis L. MacRae
 Mr. Crawford C. Madeira, Jr.
 Mr. and Mrs. Mark A. Malone
 Mr. William Mank and
 Mrs. Chris Parsons-Mank
 Mr. Michael Manley
 Mr. and Mrs. Robert A. Marden
 Mr. and Mrs. James W. Marshall, Jr.
 Mr. and Mrs. Thomas G. Marshall
 Mrs. Marie A. Martin
 Mr. and Mrs. Leory L. Martinson
 Ms. Marilyn Mays
 Mr. and Mrs. Robert C. McAdoo
 Dr. and Mrs. S. Allan McAllister
 Mr. and Mrs. J. Peter McCracken
 Mr. Maurice J. McIsaac and
 Ms. Trisha L. Rhodes
 Mr. and Mrs. Tony C. McKim
 Ms. Elizabeth A. McLellan

Ms. Elizabeth McMullan and
 Mr. Kaveh Hagherder
 McNeil Foundation
 Mr. Creighton McShane
 Dr. and Mrs. William C. Meade, MD
 Mr. and Mrs. Steen Meryweather
 Mr. and Mrs. Charles A. Meyer
 Ms. Florence R. Meyer
 Dr. and Mrs. Frederick Meyer
 Mr. and Mrs. Helmut Meyerbach
 Mr. and Mrs. Joseph W. Miley, Jr.
 Dr. and Mrs. David Miller
 Mr. and Mrs. George C. Mitchell
 Sen. and Mrs. George J. Mitchell
 Ms. Verna Mitchell-Dobson
 Monhegan Community Church
 Mr. and Mrs. Robert C. Monroe
 Dr. and Dr. Jeffrey P. Moore
 Mr. and Mrs. Kieran C. Morris
 Morris Yachts, Inc.
 Mr. Samuel G. Morrison
 Mr. and Mrs. Frank Mott-Trille
 Mr. and Mrs. Donal B. Murphy
 Roberta M. Muse
 Mr. and Mrs. David D. Myers
 Mr. and Mrs. Dennis L. Myers
 Mr. and Mrs. Stephen B. Mygatt
N Mr. and Mrs. Benjamin R. Neilson
 Mrs. Janneke S. Neilson
 Mr. and Mrs. Norman F. Nelson
 Dr. and Mrs. Anders T. Netland
 Mr. and Mrs. Peter Newell
 Ms. Susan Newhouse and
 Mr. Charles S. Randall
 Mr. and Mrs. Jarvis W. Newman
 Noel Builders, Inc.
 Ms. Paige R. Noland
 Ms. Anna L. Nordberg
 North Guilford Congregational Church, UCC
 North Parish Congregational Church
 Mr. and Mrs. Nathaniel C. Norton
 Mr. and Mrs. Lloyd E. Nonwood, Jr.
O Mr. and Mrs. Herbert S. Okun
 Mr. and Mrs. Fred Oldfield
 Mr. and Mrs. David W. Opdyke
 Ms. Anne Pell Osborn
 Mr. William Osborn
 Mr. and Mrs. Brian Osgood
 Mr. Willard K. Osier, Jr.
 Mr. and Mrs. Lambert B. Ott
P Ms. Constance Packard
 Mr. and Mrs. John H. Page
 Dr. and Mrs. John E. Parker, Jr.
 Mr. and Mrs. Rakesh B. Patel
 Mrs. Stephen Pearson
 Mr. Billups P. Percy
 Mr. John R. Perry
 Mr. John A. Perry and
 Mrs. Ellen Curreri Perry
 Mr. and Mrs. Philip D. Peters
 Mr. and Mrs. Preston D. Phillips
 Mrs. Sarah A. Phillips
 Mr. and Mrs. Frank E. Pickering
 Rev. and Mrs. Timothy Pickering
 Mr. and Mrs. Daniel Pierce
 Dr. and Mrs. Richard N. Pierson, Jr.
 Mr. Daniel A. Pileggi and
 Ms. Bronwyn W. Kortge
 Mr. Robert Polhemus and
 Ms. Carol Shloss
 Ms. Heather C. Poole

Mr. and Mrs. Frederick W. Popp
 Mr. and Mrs. Daniel P. Poteet, II
 Mr. and Mrs. Arthur G. Powell
 Mr. Ben Powell and Ms. Shauna Steele
 Ms. Julia C. Pratt
 Mr. and Mrs. Richard M. Pratt
 Mr. and Mrs. William R. Proctor
 Mr. and Mrs. Jonathan T. Pulsifer
 Mr. and Mrs. Charles T. Putnam
 Mr. and Mrs. Nathaniel S. Putnam
 Mr. and Mrs. Robert L. Quinn
 Mrs. Barbara N. Rappaport
 Mr. and Mrs. Dean S. Read
 Mr. and Mrs. Philip W. Read
 Mr. Charles Read and
 Ms. Hilary Brown
 Mr. and Mrs. George Reath, Jr.
 Mr. and Mrs. Norris M. Reddish
 Mr. and Mrs. John P. Reeves
 Mrs. Sylvia B. Reeves
 Ms. Dorian F. Reid
 Mr. and Mrs. Joseph T. Robbins
 Dr. and Mrs. Peter G. Robbins, MD
 Mr. and Mrs. Bruce C. Robertson
 Ms. Linda J. Robinson
 Ms. Sydney Roberts Rockefeller
 Rockland Congregational Church
 Mrs. M. Elois Rogers
 Mr. Neil R. Rolde
 Mr. and Mrs. Derry Roopenian
 Ms. Ruth Rossi
 Mr. and Mrs. Peter S. Rudolph
 Rev. and Mrs. Carlton T. Russell
 Ms. Justine V. Russell
S S.A.R.A. Committee of Capitol Island
 Dr. and Mrs. Eckart Sachsse
 Ms. Jo D. Saffair and
 Ms. Kristian R. Carr
 Saint Brendan the Navigator Episcopal Church
 Mr. and Mrs. Philip N. Sanford
 Mr. William L. Saunders, Jr.
 Mr. John V. Sawyer, II
 Ms. Mary Jane Schepers
 Mr. and Mrs. Michael M. Schieffelin
 Mrs. Mary W. Schley
 Mrs. Louis W. Schmidt
 Mr. and Mrs. David W. Schoeder
 Mr. Karl R. Schoettle, Jr.
 Ms. Priscilla Schummrck
 Ms. Evelyn C. Schwager
 Mr. and Mrs. Brian G. Scoles
 Mr. and Mrs. Jeffery A. Scott
 Mr. and Mrs. Ronald W. Scott
 Ms. Valerie E. Scott
 Mr. and Mrs. William C. Scott
 Seacoast Senior Citizens Club
 Mr. and Mrs. Frederick D. Seaton
 Second Congregational Church of Warren
 Second Congregational Church UCC of Newcastle
 Mr. and Mrs. Henry D. Sharpe, Jr.
 Rev. Martha B. Shaw
 Mrs. Robert P. Shay
 Mr. and Mrs. Maurice P. Shea, III
 Ms. Anne Shepley
 Mrs. Clare Shepley
 Mr. and Mrs. Charles L. Sidman
 Sigma Kappa Alumnae Ocean Area NJ
 Sigma Kappa Gamma Upsilon
 Sigma Kappa U of J Madison Delta RHO

Sigma Nu Fraternity
Mr. Herbert T. Silsby, II
Ms. Carol L. Simpson
Mr. and Mrs. Seth Singleton
Mr. Glenn Siple and
Mrs. Linda J. Thomson
Mr. and Mrs. Donald A. Small
Mr. and Mrs. Arthur W. Smith
Mr. and Mrs. Clifton R. Smith
Mr. Dennis L. Smith
Mr. Frank W. Smith
Mrs. Helen L. Smith
Mrs. Rhoda Smith
Mr. and Mrs. Thomas A. Smith
Mr. Stephen Smith and
Ms. Martha Freimuth
Dr. and Mrs. Richard W. Snodgrass
Ms. Ellen Sottery McCarty
Mr. and Mrs. H. William Sowles
Mrs. June B. Spencer
Ms. Ida L. Spooner
Mr. and Mrs. Daniel J. Sposito
St. Ansgar Evangelical
Lutheran Church
St. George Missionary Society
St. Saviour's Episcopal Church
Mr. and Mrs. C. William Stamm
Mr. and Mrs. G. Wade Stanier
Mr. and Mrs. Sheridan Steele
Dr. and Mrs. T. Douglas Stenberg
Ms. Elizabeth Stergas
Mr. Robert E. Stevens and
Ms. Kathleen E. Sullivan
Mr. and Mrs. John P. Stevenson
Mr. Averie E. Stinson
Mrs. Patricia Stoneburner
Dr. and Mrs. Elliot Strong, MD
Rev. Dr. Nadine Strout
Mr. and Mrs. Brewster Sturtevant
Ms. Barbara Sullivan
Mr. Tobias W. Suttle
Mr. and Mrs. Owen M. Sutton
Ms. Patricia A. Tanski
Mr. Richard Tardiff and
Ms. Pamela VanWechel
Ms. Esther C. Testa
Mr. and Mrs. Michele T. Testa
Mr. and Mrs. Thomas J. Testa
The Davis Agency
The Dr. Mary Cushman Circle
The Jackson Laboratory
The Neighbors
Mr. and Mrs. Charles C. Thomas
Mr. and Mrs. William M. Thomas
Mr. and Mrs. Ronald E. Thompson, Jr.
Mr. Alix T. Thorne
Rev. Dr. and Mrs. Ansley
C. Throckmorton
Ms. Joan P. Tilney
Mr. and Mrs. David D. Tobey
Tom's Mini-Mart, Inc.
Ms. and Mr. Laurel H. Towers
Town of Jonesport
Mr. and Mrs. Alfred G. Trani
Mr. and Mrs. Robert J. Tremblay
Mr. Paul Trickett and
Ms. Gloria Howard
Trinitarian Congregational Church
Dr. Carmen E. Trisler, PhD
Mr. and Mrs. Dana Twombly
Mr. and Mrs. Mark G. Twombly

U Mr. Charles and Rev. Lynda Z. Tyson
Ms. Marie E. Underwood
Union Church of South Addison
Union Congregational Church
Woolaston, MA
United Congregational Church
Norwich, CT
United Methodist Women of Gardiner
United Parish of Harrison and
N. Bridgton
United Way of the National
Capital Area
V Mr. and Mrs. Peter C. Vacca
Mr. and Mrs. Richard C. Valentine
Mr. and Mrs. Harold Van Siclen
Ms. Fordyce E. Van Winkle
Mr. and Mrs. Samuel Vaughan
Mr. Charles O. Verrill, Jr.
Mr. Paul J. Vignos, Jr.
Mr. and Mrs. Albert J. Vollmer
Mr. and Mrs. Dyer S. Wadsworth
W Ms. Mary Jane Waite
Ms. Ann S. Waldron
Mr. and Mrs. Gary J. Walker
Dr. and Mrs. Hallam Walker
Mr. and Mrs. George Wallis
Mr. and Mrs. Brian Walsh
Mr. and Mrs. Chester L. Walton, Jr.
Mr. and Mrs. Roger C. Ward
Mrs. Virginia S. Warner
Washington Ladies Guild
Mr. and Mrs. W. Bell Watkins
Mr. and Mrs. Bill Webber
Mr. and Mrs. Jon H. Webber
Dr. Carnes Weeks, Jr.
Mr. Michael Weinberg and
Ms. Jeanne Rotunda
Mr. and Mrs. Frank E. Weise, III
Ms. Susan C. Welch
Mr. John C. Wellington
Wells Branch Homemakers Extension
Group
Wells Fargo Foundation
Mr. and Mrs. Frederick L. Wenger
Mr. and Mrs. Mark B. Werner
West Forks Congregational Church
Mr. and Mrs. D. Bradford
Wetherell, Jr.
Mr. and Mrs. John P. Wetzel
Mr. Robert D. Whalen, Jr.
Mr. and Mrs. David A. Wheatland
Mr. and Mrs. Norman A. Whitaker
Ms. Ruth F. Whitcomb
Mr. and Mrs. Jerry T. White
Mr. and Mrs. Ernest A. Whitehouse
Mrs. Elspeth Whitney
Mr. and Mrs. Gregg S. Whitney
Whitney Originals, Inc.
Ms. Judith Whitney-Blake
Mr. A. Logan Wichern
Mr. and Mrs. Charles R. Wiegler
Mr. Ellsworth E. Williams
Mr. and Mrs. Russell W. Williams
Mr. and Mrs. Warren Williams
Ms. Mary Ann Wockenfuss
Mrs. Irene G. Wolf
Women's Society, United Church
of Christ
Women's Union of the First Baptist
Church of Water
Women's Fellowship of Hammond St.

Rev. and Mrs. William J. Wood
Mr. and Mrs. David B. Woodside
Mr. James Woodworth and
Mr. John A. Murphy
Ms. Carol Woolman and
Mr. Richard Bullock
Mr. and Mrs. Dale L. Worthen
Mr. and Mrs. Eugene R. Woturski
Ms. Susan W. Wren
Ms. Patricia B. Wright
Y Mr. Thomas K. Yoder
Ms. Doris Anne H. Younger
Ms. Karen O. Zimmermann
Z
Trusts and Bequests
George M. Butler Trust
John C. Enk Charitable Trust
Mary S. Enk Trust
Frances Graves Perpetual Trust
Catherine Alice Gunn Trust
Eugene B. Hamilton Trust
Marion B. Hamilton Trust
Virginia B. Lloyd Bequest
Matilda Markoe Trust
Ray G. Marston Trust
Edward B. Mears Trust
Austin & Ruth Robinson Perp. Trust
Wyman & Della Whitney Trust
Matching Gift Companies
Bank of America
Benjamin Moore & Co.
UnumProvident Corporation
Verizon Foundation
Gift in Honor
Mr. Charles F. Adams, III
Stephanie and Rick Alley
Al Ames
Chuck and Nate Barrett
Jarvis Barton
Mrs. Cornelia Greaves Bates
Rob Benson
Harry and Anne Bliss
Susan Schmidt Bonner
Ruth F. Koe Brady
Don and Peege Brenton
Olga Buczynski
Rev. Abby Lynn Campbell
Mary and Howard Capito
Mr. and Mrs. James F. Caulk
Mr. and Mrs. Peter Brooks Chapin
Mr. and Mrs. Christopher A. Childs
Jerry Clossson
Ruth and Tris Colket
Martha and Jim Currier
Robert Curry and Pamela Proulx-Curry
Patricia DeGroot
Rev. and Mrs. Gary DeLong
Pat and Bob Dexter
Stanya Dorr
Captain Ralph Driscall
Rev. Ken Dutille
F. Talbot Emery
Mr. and Mrs. Byron R. Ferg
Ira Marvin and Katie Gamble
Rev. James Gaylor
Rev. and Mrs. R.B. Gibbins
Jill and Sheldon Goldthwait
Jim Gower
Jennifer and Steve Fowler Greaves
Rev. and Mrs. George Habel

Mary Hockmeyer
Rev. Theodore Hoskins
Ivan and Florence Hoyt
Ann, David and Beth Ingram
Paul T. Iossa
Ruth Ives
Oakley Johnson
Ernest and Mildred Lape
Tamara and Andy Leicester
Cathy Lewis
Mr. and Mrs. Harvey Lowd
Page Mitchell
Albert Myers
Ambassador Chester Norris
Jane Peterson
Catherine Poor
Trapper and Pat Reynolds
Judy and Steve Richards
Grace Rodick
Ann Rolston
Ruth Rossi
Levi Cassidy Shaw
Mary Ann Sheehan
Mr. and Mrs. Chadbourne Smith
Glenn Tucker
Marjorie Twombly
Gavin Watson
Margaret Wetzel
Rev. Nicholis and Diana White
Gifts in Memory
Marie Louise Beal
Margaret Betts
Elizabeth B. Bousfield
Rev. and Mrs. Neal D. Bousfield
Weston Bousfield
Mr. and Mrs. Alfred R. Bray
Katherine C. Brengle
Albert Bunker
Robert E. Cech
Willie and Velma Corbett
The Rev. George R. Dawson
Jeanne Gloria Decker
Dorothy and Merrill Dooley
Fannie and Harold Finnimore
Charles Pat Foster
Edward S. Greaves
Daniel Grinnell
Helen E. Carter Guptill
Rev. Nathanael M. Guptill
Sarah Nash Gurney
Henry F. Harris
Rev. Stanley B. Haskell
Burd Reed Helmer
Mrs. Toni Hood
Dr. and Mrs. Theodore Hsu
Milton Hultman
Daisy Jamieson
Carl Kaminski
Julia C. Knickerbocker
Howard Kyle
Henry Lathrop
Avis Layman
Lawrence Lewis
Virginia Lloyd
Marion Malone
Clifton and Robert Morong
Suzanne Oldfield
Genevieve Osier
Marjorie Osier
Vernon L. Philbrook

David W. Plumer
Dee Pulkkinens Father
Prof. and Mrs. Edward Bliss Reed
Audrey Rubenstein
Dwight E. Sargent
William A. Schneider
Joyce K. and Roderic M. Scott
Stanley Seimer
Elsie Sherman
Edward and Elizabeth Spingarn
Paul and Betty Starkey
Dana F. Tucker
Rev. Chris W. Turner
Shirley I. Vedoe
Isabel Charles Warner
Kenneth Webber
Ruth Stowell Whitney
Dr. Welborn Kiefer Willingham
William Wockenfuss
Clayton and Nina Young
Gifts In-Kind
Anonymous
Ms. Lila Achor
Mr. John Ackerman and
Ms. Helen Bow
Mr. Harry B. Adams
Mr. and Mrs. David T. Allen
Ms. Judith Allen
Ms. Ina Alley
Apollo Plumbing
Ms. Ruth Appleyard
Ms. Patricia Ardito
Bar Harbor Bank & Trust
Bar Harbor Bicycle Shop
Bar Harbor Inn
Bar Harbor Wear
Bar Harbor Whale Museum
Bar Harbor Whale Watch
Mr. and Mrs. Robert C. Bartlett
Bass Harbor Inn
Bayside Shop and Save
Mr. and Mrs. Bob Beallor
Mr. and Mrs. Robert Bechtold
Ms. Margarette Beitzell
Ben & Bill's Chocolate Emporium
Mr. and Mrs. Fred S. Benson
Ms. Karen H. Berner
Mr. and Mrs. Dan Berry
Mr. and Mrs. Dana Berry
Big Woods Congregational Church
Mr. Albert H. Black
Mr. and Mrs. Leo Boisvert
Mr. and Mrs. Paul Boisvert, Sr.
Mr. and Mrs. Michael Bonsey
Mr. and Mrs. Ernie Bouchard
Ms. Dorothy S. Boyle
Mr. and Mrs. C.H. Breedlove
Mr. and Mrs. Mark Brown, MD
Mr. Richard Bullock
Mrs. Judith Burger-Gossart
Mr. Ned Butler
Calais, Me Chapter of the American
Sewing Guild
Cappy's Chowder House
Mr. and Mrs. John H. Carman
Ms. Rebecca Castle
Castlemaine Inn
Mr. David D. Cech
Mr. Dean Cerutti and
Ms. Angela Festa

Chebeague Parents Association
 Ms. Dorothy A. Clair
 Ms. Sarah M. Clemens
 Mr. and Mrs. James L. Clunan
 Ms. Marie Coffron
 Mr. and Mrs. Francis I.G. Coleman
 Mr. and Mrs. Tristram C. Colket, Jr.
 Connors Emerson PTSA
 Dr. Llewellyn W. Cooper
 Mr. and Mrs. Donald Cousins
 Mr. John A. Craig
 Ms. Carol Cramer-Drummond
 Mr. Bill Crawford
 Mr. and Mrs. Chester R. Curtis
 Mr. and Mrs. Ed Dalch
 Mr. and Mrs. Frederick H. Darrow
 Ms. Angela Delvecchio
 Mr. and Mrs. John A. DeTurris
 The Dover Church
 Dover-Foxcroft Congregational Church
 (UCC)
 Mrs. L. Duncombe
 Ms. Joan B. Elliott
 Mr. James Fahey and
 Mrs. Eileen McGlinchey Fahey
 Mrs. Patricia A. Fair
 First Baptist Church of S. Benwick
 First Congregational Church
 of North Anson
 First Congregational Church
 of Searsport
 First Parish Congregational Church
 of York
 Ms. Anne Fitzgerald
 Ms. Jean Forney
 Mr. and Mrs. John R. Fox
 Mr. Matt Fronczak
 Mr. and Mrs. Timothy Frost
 Mr. and Mrs. Robinson G. Fry
 Mr. and Mrs. Nicholas T. Genimatas
 Ms. Louise Gibson McGarvey
 Mr. Maurice Googins
 Mr. and Mrs. Robert C. Gray
 Gurnee Community Church
 Mr. and Mrs. Richard Guttman
 Ms. Mary R. Haines
 Mr. and Mrs. Robert B. Hale
 Hannaford Brothers, Inc.
 Ms. Joanne Harris
 Mr. and Mrs. Raymond W. Harrison
 Healthy Maine Partnership in
 Washington County
 Mr. and Mrs. Michael E. Healy
 Ms. Alma Healy
 Ms. Mary Jane Helfrich
 Ms. Heidi Hershberger
 Ms. Linda M. Higgins
 Dr. and Mrs. John P. Hoche, MD
 Mr. and Mrs. William E. Hogan
 Ms. Lara K. Homer
 IAAP
 Ms. Selena Jay
 Ms. Tina Jewett
 Mary Jones
 Jones Day
 Ms. Alison Keck
 Mr. Christopher Keefe and
 Mrs. Anne Russenberger-Keefe
 Mr. and Mrs. Charles R. Keen
 Ms. Gwendolyn L. Kelley
 Keyword Association, Inc.

Gwen Kloeber
 Cheryl Knowles
 Ms. Jacqueline Knowles
 Ms. Maria A. Kolenda
 Ms. Anne Kozak
 Ms. Virginia Kozak
 Mr. and Mrs. J. R. Krevans
 Mr. and Mrs. Philip B. Lape
 Mr. and Mrs. Bob Lehmann
 Ms. Marycarol Lenahan
 Lincoln First Congregational Church
 Mr. and Mrs. John Linder
 Ms. Claudine Lurvey
 Maine Point
 Mainely Music
 Mr. Joseph M. Martit
 Ms. Louise G. McGarvey
 Mr. and Mrs. Jim McGaughy
 Ms. Judy McMorrow
 Ms. Enid K. McNeally
 Mr. and Mrs. Dean J. Merrill
 Merry Makers 4-H Club
 Metal Magic Inc.
 Mr. and Mrs. Robert Metcalf
 Miller Gardens
 Missions Third Congregational Church
 Ms. Susan W. Mitchell
 Mr. and Mrs. Larry Mobraaten
 Ms. and Mr. Donna Moore
 Mr. R. F. Morhart
 North Deering Congregational Church
 Mrs. Anne Odell
 Mr. and Mrs. David W. Opdyke
 Ms. Ellen Openshaw
 Ms. Merry Ossenheimer
 Ms. Ann M Otto
 Mrs. Goldie Pailles
 Mr. Lawrence Pailles
 Paradis True Value Hardware
 Mr. and Mrs. Rakesh B. Patel
 Ms. K Peirson
 Mrs. Harriet Pendleton
 Ms. Ila Peters
 Rev. Dr. Lin Peyton
 Ms. Cheryl Phelps
 Phippsburg Unity Circle
 Mrs. Ellen Pinkham
 Mr. Alton Pinkham and
 Ms. Lucy Williams
 Mr. and Mrs. Nathaniel S. Putnam
 Queen Anne's Flower Shop
 Mr. and Mrs. Robert M. Radle
 Ms. Annie Ramirez
 Dr. and Mrs. Raymond N. Rappaport
 Ms. Glenna Ray
 Mr. and Mrs. W. Stanley Reed
 Mrs. Kay Reynolds
 Mr. and Mrs. Stephen H. Richards
 Ms. Carol B. Rivers
 Ms. and Mr. Terri Rodick
 Ms. Amy Rosen
 Ms. Ruth Rossi
 Ms. Jan Scott
 Second Congregational Church UCC,
 Norway
 Mr. and Mrs. Paul Selya
 Sigma Kappa Alumnae Allendale, MI
 Sigma Kappa Alumnae Athens, TN
 Sigma Kappa Alumnae Atlanta, GA
 Sigma Kappa Alumnae Bluegrass, KY
 Sigma Kappa Alumnae Central FL



BILL KUYKENDALL

Sigma Kappa Alumnae Chicago, IL
 West Towns
 Sigma Kappa Alumnae Cincinnati EK
 Sigma Kappa Alumnae Cleveland W.
 Shore, OH
 Sigma Kappa Alumnae Dallas, TX
 Sigma Kappa Alumnae Indianapolis,
 IN
 Sigma Kappa Alumnae Lexington, KY
 Sigma Kappa Alumnae Medham, NJ
 EK
 Sigma Kappa Alumnae North Florida
 Sigma Kappa Alumnae PA
 Sigma Kappa Alumnae Reno, NV
 Sigma Kappa Alumnae San Fernando
 Valley, CA
 Sigma Kappa Alumnae W. Orange
 County, CA
 Sigma Kappa Babson College Zeta
 Zeta
 Sigma Kappa Bowling Green, OH
 Theta Upsilon
 Sigma Kappa CO School of Mines
 Zeta Pi
 Sigma Kappa Elmhurst College IL Zeta
 Iota
 Sigma Kappa IL Theta
 Sigma Kappa Marietta College Beta
 Theta
 Sigma Kappa U of Badley Beta Nu
 Sigma Kappa U of CA State Epsilon
 Lambda
 Sigma Kappa U of E. MI Delta Alpha
 Sigma Kappa U of Elon Kappa Zeta
 Sigma Kappa U of GA EE
 Sigma Kappa U of Hartford, CT Theta
 Sigma
 Sigma Kappa U of IA State Alpha
 Epsilon
 Sigma Kappa U of KY Theta Rho

Sigma Kappa U of Las Vegas, NV
 Theta Eta
 Sigma Kappa U of MA Beta Eta
 Sigma Kappa U of MD Beta Zeta
 Sigma Kappa U of N. IL Gamma Zeta
 Sigma Kappa U of N.W. MO Kappa
 Alpha
 Sigma Kappa U of NC Gamma Phi
 Sigma Kappa U of NY at Geneseo
 Theta Pi
 Sigma Kappa U of OH Beta Upsilon
 Sigma Kappa U of Rutgers EK
 Sigma Kappa U of SE IN Zeta Alpha
 Sigma Kappa U of TN at Chattanooga
 Theta Phi
 Sigma Kappa U of Wesleyan, IL Eta
 Mr. and Mrs. Arnold A. Sio
 Mr. and Mrs. Carter Sio
 Ms. Louise Smith
 Smithfield Avenue Church
 Somerville Union Meeting House,
 UCC
 South Congregational Church in
 So. Glastonbury
 Ms. Roslyn Springer
 St. Matthew's United Church of Christ
 Mr. and Mrs. Todd Stanley
 Bernadette Stiles
 Mr. and Mrs. John S. Stillman
 Mr. and Mrs. William
 J. Strawbridge, Jr.
 Ms. Lisa Suarez
 Mr. and Mrs. Martin Sullivan
 Mr. William Sweet
 Tampa Bay, FL Alumnae E K Sorority
 Ms. Anne Tarbell
 Mr. and Mrs. Pete Teel
 The First Parish Church UCC
 Mrs. Ruth Thibodeau
 Mr. and Mrs. Billy B. Thompson

Ms. Joan P. Tilney
 Timberhead Music
 Mr. Brian Timko and
 Ms. Leslie Barroso
 Mr. and Mrs. Sean Todd
 Trinity Lutheran Church of Boston
 Trinity Lutheran Church-Willing
 Workers
 Dr. Carmen E. Trisler, PhD
 Mr. and Mrs. Dana Twombly
 Mrs. Marjorie D. Twombly
 United Baptist Church
 Mr. and Mrs. Ronald Varin
 Mr. Jim Vekasi
 Mr. Jim Vetzasi
 Mr. and Mrs. John Viechnicki
 Ms. and Ms. Martha Walker
 Wells Branch Homemakers Extension
 Group
 Ms. Gladys Werkley
 Mr. and Mrs. Bruce B. Wierenga
 Mr. and Mrs. Richard L. Wiggin, II
 Mr. Katherine Willis
 Window Panes
 Workman Publisher
 Rev. and Mrs. Stuart G. Wysham
 Mr. and Mrs. Charles R. Young

*We apologize for any errors
 or omissions. If you notice a
 problem, please call Sarah
 Clemens at 207-288-5097,
 ext. 12, or email her at
 sclemens@seacoastmission.org.*

Board of Directors

Jill M. Goldthwait, *President*
H. Lee Judd, *Vice President/Treasurer*
Chadbourn H. Smith, *Secretary/Clerk*
Charles B. Alexander
Alan L. Baker
Cornelia Greaves Bates
Roger S. Clapp
Lester L. Coleman
Ruth M. Colket
Dennis Damon
William E. Eason, Jr.
Theodosia J. Gray
Monika A. Heimbold
Nancy K. Ho
Phillip B. Lape
Tony C. McKim
Joseph M. Murphy
Chester E. Norris
Timothy P. Schieffelin
Henry L. P. Schmelzer
Howsie Stewart
Linda B. Thompson
Ansley C. Throckmorton
Gavin H. Watson, Jr.

Honorary Directors

Curtis L. Blake
Gordon I. Erikson
Charles K. Foster, Jr.
Christopher Hutchins
Frederick E. Hutchinson
Justine M. Morris
John E. Parker, Jr.
Patricia G. Scull
Lynda Z. Tyson
Douglas Williams

Staff

Colket Center, Bar Harbor

Rev. Gary A. DeLong, *Executive Director*
Tony Hessert, *Director of Finance and Administration*
Stephen Richards, *Director of Development*
Marianne Barnicle, *Volunteer Archivist*
Sarah Clemens, *Development Associate*
Kathy Jaensch, *Assistant Financial Manager*
Julie Patton, *Christmas Program Coordinator*
Terri Rodick, *Executive Assistant and Scholarship Coordinator*
Tammy Thurlow, *Receptionist*
Charles Weber, *Colket Center Caretaker*

Downeast Campus, Cherryfield

Charlie Harrington, *Director of EdGE*
Wendy Harrington, *Director of Service Programs*
Jordan Clark, *EdGE Site Coordinator*
Maria Hall, *EdGE Administrative Assistant*
Susie James, *EdGE Site Coordinator*
Isaac G. Marnik, *EdGE Site Coordinator*
Allison M. Ouellet, *EdGE Lead Site Coordinator*
Les Stanwood, *EdGE Volunteer Coordinator*
Laurie Merchant, *Thrift Shop Assistant Manager*
Marilyn Nickson, *Thrift Shop Manager*
Gena Norgaard, *Food Pantry Manager*
Scott Shaw, *Downeast Campus Caretaker*

Island Outreach

Rev. Robert Benson, *Pastor to the Outer Islands*
Sharon Daley, *Nurse*
Michael Johnson, *Sunbeam V Captain*
Storey King, *Sunbeam V Engineer*
Rev. Ted Hoskins, *Minister to Coastal Communities and Fisheries*
Rev. Joseph Duncan, *Interim Minister,*
Second Baptist Church of Islesboro
Rev. Ken Dutille, *Minister, Swan's Island Baptist Church*
Rev. David Macy, *Minister, North Haven Baptist Church*
Rev. Michelle Wiley, *Minister, Union Church of Vinalhaven*



Is helping people one of your missions in life?

There are many ways you can help the Maine Sea Coast Mission help children, families, and seniors in need.

BY MAIL Please make checks payable to *Maine Sea Coast Mission* and mail to the following address:

The Maine Sea Coast Mission
127 West Street
Bar Harbor, ME 04609

BY PHONE Please call 207-288-5097 or 1-888-824-7258. Visa, MasterCard, American Express, and Discover are accepted.

GIFTS OF STOCK Please call Steve Richards at 207-288-5097 for delivery instructions.

PLANNED GIVING OPPORTUNITIES Planned gifts prolong your support of the Mission's work, ensuring that ever increasing numbers of Maine's coastal and island residents will know the Mission as their partner in weathering life's challenges. Through planned giving, members and supporters of the Mission have the opportunity to reduce the taxable amount of their estates and to help secure the Mission's future at the same time.

THE MISSION AS BENEFICIARY Naming the Maine Sea Coast Mission as beneficiary of an IRA, life insurance policy or investment account is as easy as notifying your account or policy manager of your wishes. Some individuals establish life insurance policies with the intent of leaving the Mission a larger sum at the end of their lives than they would be able to contribute during their lifetime.

NAMING THE MISSION IN YOUR WILL Adding a sentence to your will instructing that a specified dollar amount or percentage of your residuary estate be given as a charitable contribution to the Maine Sea Coast Mission will result in a gift that will both reduce estate taxes and help the Mission to extend its future outreach. Real estate and investment securities also can be designated as gifts to the Mission through your will.

PLEASE VISIT THE SECTION OF OUR WEB SITE ON PLANNED GIVING WHICH PROVIDES USEFUL INFORMATION ON A WIDE VARIETY OF DIFFERENT PLANNED GIVING VEHICLES. This section of our web site also has the latest information on new types of planned gifts as well as articles on the benefits of different types of planned gifts. The Mission's web site is www.seacoastmission.org. When you reach the Mission's web site, just click on "What You Can Do" and then click on "Planned Giving" to find a wealth of information about planned giving options which provide a wide range of benefits to you and to the Maine Sea Coast Mission.

EDITOR Stephen H. Richards

ASSISTANT EDITOR Sarah M. Clemens

PHOTOGRAPHY Bill Kuykendall, Fred Field, Staff

DESIGN Z Studio

PRINT Snowman Printing & Presort Express

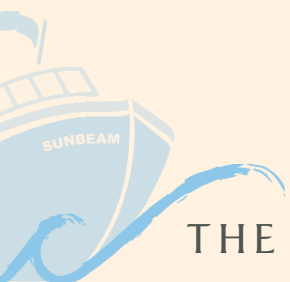


"Parents expect us not only to keep their children safe and help with their homework, but they trust that we will reinforce core values and attitudes that shape lifelong habits of character and self-esteem."

GARY DELONG, *Executive Director*

EdGE children sewing a Gee's Bend style quilt.

207.288.5097 | 127 West Street, Bar Harbor, Maine 04609 | www.seacoastmission.org



THE MAINE SEA COAST MISSION